

Corner Record

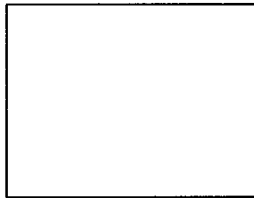
Document Number 2359

City of _____

County of Sacramento, California

Brief Legal Description

The centerline intersection of 22nd Avenue and 44th Street, as shown on the "Plat of Grenz Tract", filed in the Office of the Recorder of the County of Sacramento in Book 35 of Maps, at Page 26.



Corner Type

Coordinates

(Optional)

Government Corner	()	Control	()	N.	_____
Meander	()	Property	(x)	E.	_____
Rancho	()	Other	()	Zone	_____ Datum _____
Date of Survey	<u>4/3/2009</u>	Elev.	_____		

Corner- Left as Found () Found and Tagged () Established () Reestablished (x) Rebuilt ()

Identification and Type of Corner Found, Evidence used to Identify or Procedure used to Establish or Reestablish the corner:

Found 3/4" iron pipe monument at the centerline intersection of 22nd Avenue and 44th Street, as shown on the "Plat of Grenz Tract", filed in the Office of the Recorder of the County of Sacramento in Book 35 of Maps, at Page 26. Set 3/4" Sacramento County brass tags in concrete for reference points. Refer to Sacramento County field notes F-296, page RP-1, 4/3/2009.

A Description of the Physical Condition of the Monument as Found and as Set or Reset:

Replaced original monument on 9/15/2010 with 2 1/2" brass disc, stamped "Sacramento Co. Municipal Services, 2010", in monument well after original monument was destroyed as a result of construction.

Surveyor's Statement

This Corner Record was prepared by me or under my direction in conformance with the Land Surveyor's Act on 9/15/2010

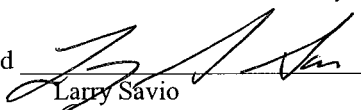
Signed 
Ryan L. Ming

LS 8409



County Surveyor's Statement

This Corner Record was received 9/28, 2010 and examined and filed 9/29, 2010

Signed 
Larry Savio

Title: Associate Land Surveyor

County Surveyor's Comments:



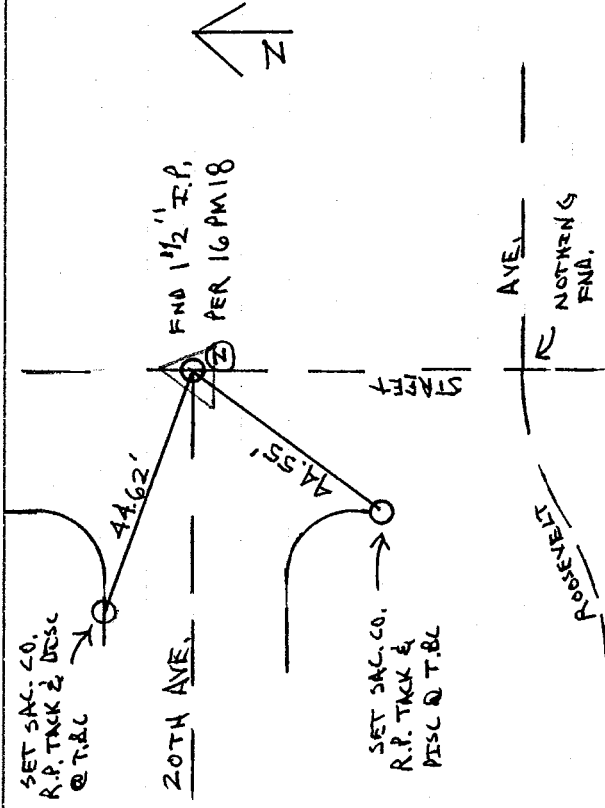
Crew: T. BEAR

Date: A-03-2009
L. MTSAMORE
L. SEVEL

Page: R.P. - 1 OF 2
70°F

Project: FEDERAL STIMULUS - 44TH ST.
14TH AVE. TO 23RD AVE.

5+49⁰⁰ INTXN. 20TH AVE - FND. 1 1/2" I.P. PER 16PM18
32BM19

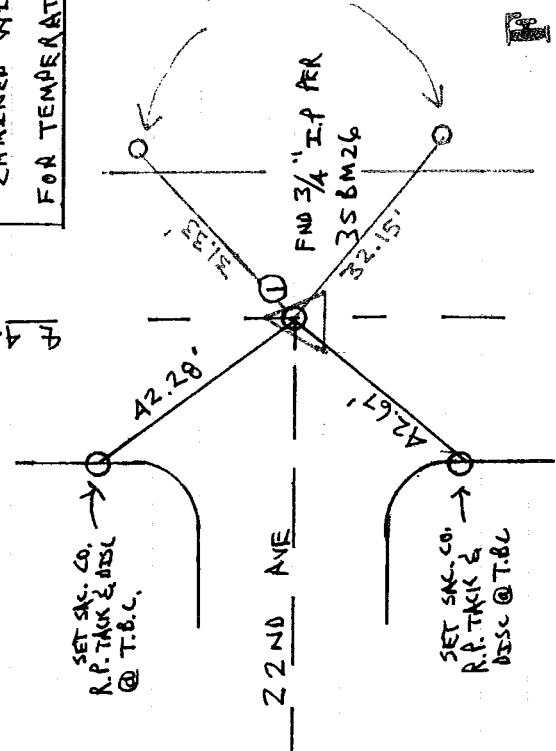


INTXN. ROOSEVELT AVE. - NOTHING FND

△ = SET 2 1/2" BRASS DISK IN MONUMENT
WELL STAMPED "SACRAMENTO CO. MUNICIPAL
SERVICES 2010"
PUNCHED ON 9/15/2010

0+00⁰⁰ INTXN. 22ND AVE. - FND 3/4" I.P. PER 35BM26

NOTE: ALL DISTANCES PLAT
CHAINED WITH NO CORRECTIONS
FOR TEMPERATURE



NOTE: POINTS COLLECTED WITH GPS USING CALIF.
ZONE 2, EPOCH 2002.00, HOWIE AVE BASE STATION,
COLLECTION "D", JOB F296