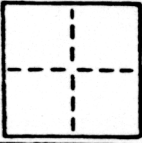


CORNER RECORD

COUNTY OF SACRAMENTO T. 8 N. R. 5 E. MERIDIAN CALIFORNIA
 CORNER TYPE: GOVT. CORNER MEANDER RANCHO CONTROL OTHER
 CORNER IDENTIFICATION — DATE OF VISIT MAY 10 1989



LOT 1363 OF PARKWAY EST. #14, 58 BM B

CORNER — LEFT AS FOUND FOUND AND TAGGED REESTABLISHED OBLITERATED CORNER REBUILT

PHYSICAL DESCRIPTION OF CORNER FOUND; EVIDENCE AND METHOD USED TO IDENTIFY OR REESTABLISH

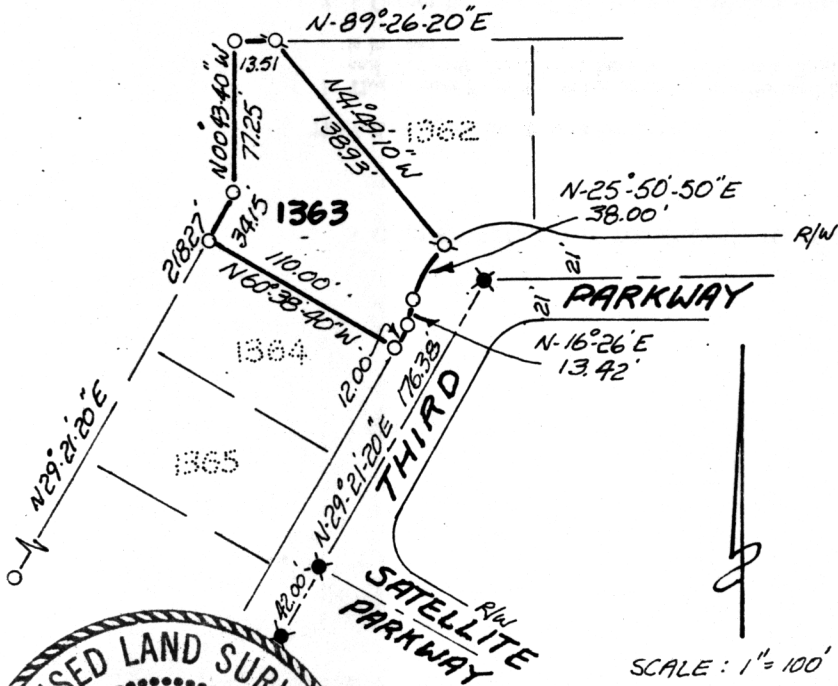
SEE SKETCH

PHYSICAL DESCRIPTION OF MONUMENTS REBUILT OR PERPETUATED

SEE SKETCH

CALIFORNIA COORDINATE SYSTEM ORDER: FIRST SECOND THIRD
 STATIONS USED: NGS (USC & GS) STATE COUNTY OTHER STATION _____ STATION _____
 ZONE _____ ELEVATION _____ NORTHINGS (Y) _____ EASTINGS (X) _____

SKETCH: (Include reference tie or witness points, remarks and topo of area)



LEGEND

- ⊗ = FND. 3/4" IRON PIPE, NO TAG
- = DIMENSION POINT
- ⊙ = SET 3/4" REBAR, L.S. 5123

SCALE: 1" = 100'



SURVEYOR'S CERTIFICATE
 THIS CORNER RECORD WAS PREPARED BY ME OR UNDER MY DIRECTION IN CONFORMANCE WITH THE LAND SURVEYORS ACT ON _____ 1989
 SIGNED: Steven A. Gardner
 L.S. 5123

SEAL

COUNTY SURVEYOR'S CERTIFICATE
 THE CORNER RECORD WAS RECEIVED June 1 1989 AND EXAMINED AND FILED June 6 1989
 BY: James Walker
 TITLE: Supervising Engineering Tech
 DOCUMENT No. 235
 STATEMENT ON BACK OF SHEET YES NO