

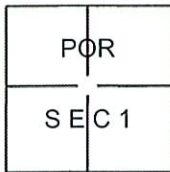
CORNER RECORD

Document Number 2339

City of ELK GROVE

County of SACRAMENTO, California

Brief Legal Description A PORTION OF "VIA VERDE UNIT NO. 1", 113 R.M. 12,
A.P. MAP: BK. 132, PG. 34



CORNER TYPE

Government Corner Control
 Meander Property
 Rancho Other

Date of Survey 9-30-09

COORDINATES(Optional)

N. _____

E. _____

Zone _____ NAD27 NAD83

NAD83 Epoch _____

Elevation _____

Vert. Datum: NGVD29 NAV88

Meas. Units: Metric Imperial

T. 6 N., R. 5 E. M.D.M

Corner - Left as found Found and tagged Established Reestablished Rebuilt

Identification and type of corner found: Evidence used to identify or procedure used to establish or reestablish the corner:

FOUND 3/4" IRON PIPE AT SURFACE, NO TAG, LOCATED AT THE CENTERLINE INTERSECTION
OF VALLEY OAK LANE AND CORTE DORADO COURT AS SHOWN ON ABOVE SAID MAP.

A description of the physical condition of the monument as found and as set or reset: TAGGED THE FOUND 3/4" IRON
PIPE WITH PLASTIC CAP STAMPED L.S. 4154.

SURVEYOR'S STATEMENT

This Corner Record was prepared by me or under my direction in conformance with
the Land Surveyor's Act on 11-07, 2009.

Signed Terry L. Castle (P.L.S. or R.C.E. Number L.S. 4154)



COUNTY SURVEYOR'S STATEMENT

This Corner Record was received 5/5, 2010 and examined
and filed 5/10, 2010.

Signed Terry A. Stur (P.L.S. or R.C.E. Number 7965)

Title ASSOC. L.S.

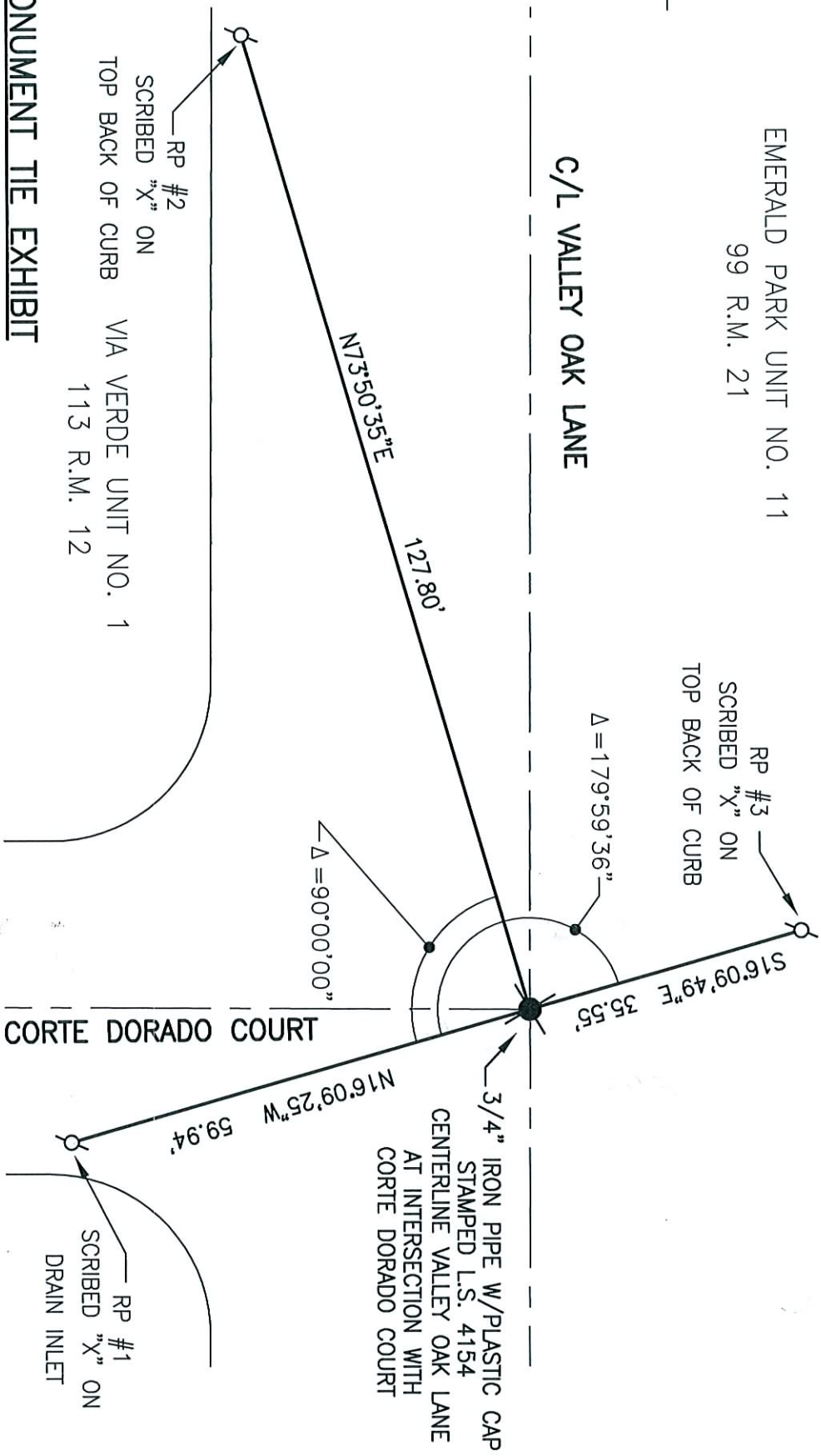
County Surveyor's Comment _____

CORNER RECORD
DOC. NO. _____

SCALE: 1" = 20'

EMERALD PARK UNIT NO. 11
99 R.M. 21

C/L VALLEY OAK LANE



CORTE DORADO COURT

MONUMENT TIE EXHIBIT

CENTERLINE VALLEY OAK LANE
AT INTERSECTION WITH
CORTE DORADO COURT
93 R.M. 2
CITY OF ELK GROVE
SACRAMENTO COUNTY, CALIFORNIA



CLAYBAR ENGINEERING, INC.
9354 ELK GROVE-FLOIRIN ROAD
ELK GROVE, CA 95624
Ph.: 916-684-7301
Fax: 916-684-2627
(PT. NO. 1104)