

# CORNER RECORD

Document Number 2319

City of ELK GROVE

County of SACRAMENTO, California

Brief Legal Description A PORTION OF "PLEASANT GROVE ESTATES", 127 R.M. 17,  
A.P. MAP: BK. 127, PG. 28

POR
SEC
28

### CORNER TYPE

Government Corner  Control   
 Meander  Property   
 Rancho  Other

Date of Survey 8-12-09

### COORDINATES(Optional)

N. \_\_\_\_\_  
 E. \_\_\_\_\_  
 Zone \_\_\_\_\_ NAD27  NAD83   
 NAD83 Epoch \_\_\_\_\_  
 Elevation \_\_\_\_\_  
 Vert. Datum: NGVD29  NAV88   
 Meas. Units: Metric  Imperial

T. 7 N., R. 6 E. M.D.M

Corner - Left as found  Found and tagged  Established  Reestablished  Rebuilt

Identification and type of corner found: Evidence used to identify or procedure used to establish or reestablish the corner:

FOUND 3/4" IRON PIPE, UNTAGGED, AT THE CENTERLINE OF RANCHVIEW COURT LOCATED  
IN THE CENTER OF THE CUL-DE-SAC BULB AS SHOWN ON SAID MAP.

A description of the physical condition of the monument as found and as set or reset: TAGGED FOUND 3/4" IRON  
PIPE WITH PLASTIC CAP STAMPED L.S. 4154.

### SURVEYOR'S STATEMENT

This Corner Record was prepared by me or under my direction in conformance with

the Land Surveyor's Act on 11-07, 2009.

Signed Terry L. Castle (P.L.S.) or R.C.E. Number L.S. 4154



### COUNTY SURVEYOR'S STATEMENT

This Corner Record was received 5/5, 2010 and examined

and filed 5/7, 2010.

Signed Jay S. Savio (P.L.S.) or R.C.E. Number 7965

Title ASSOC. L.S.

County Surveyor's Comment \_\_\_\_\_



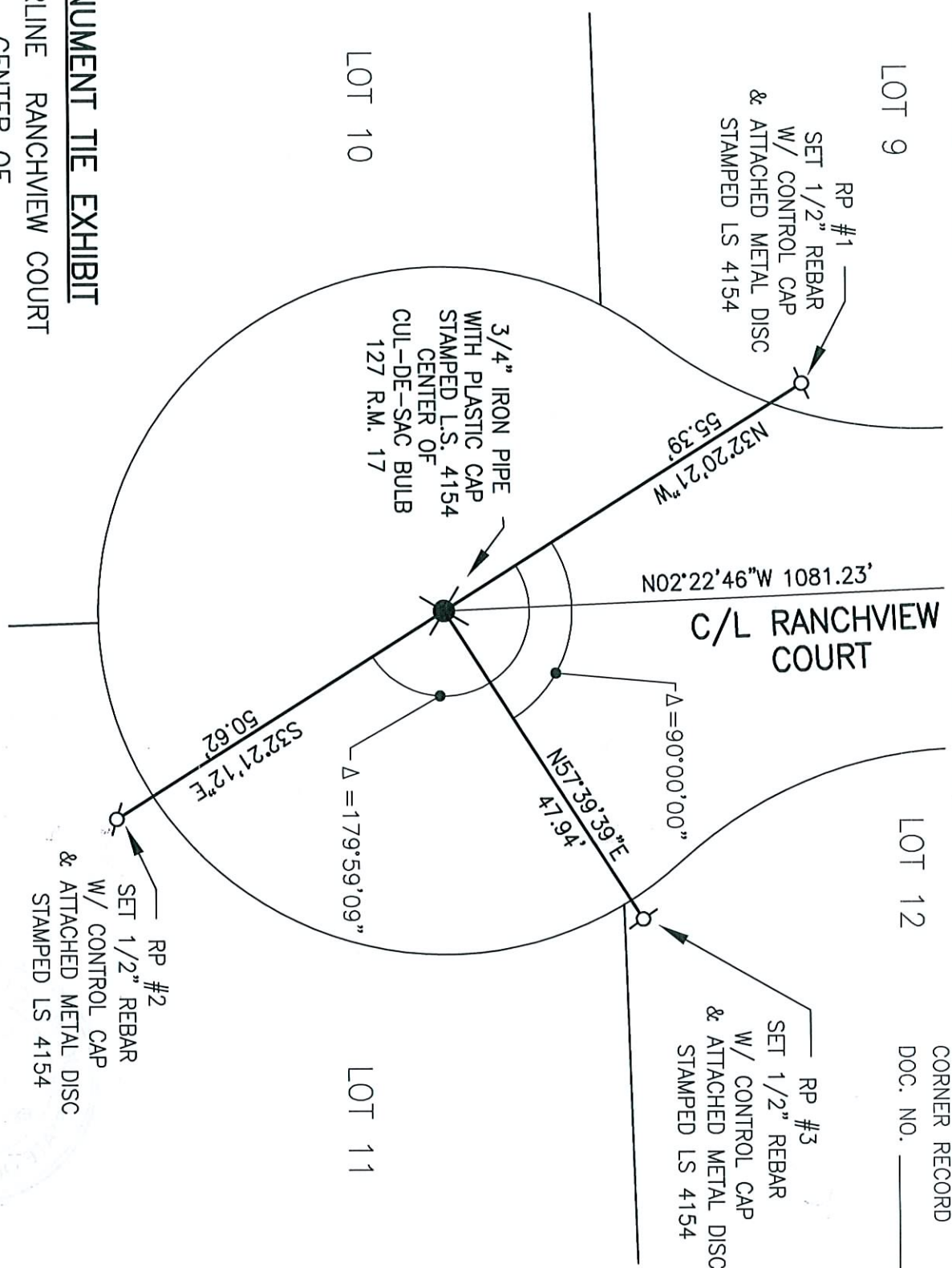
LOT 9

LOT 12

LOT 10

LOT 11

SCALE: 1" = 20'



**MONUMENT TIE EXHIBIT**

CENTERLINE RANCHVIEW COURT  
CENTER OF  
CUL-DE-SAC BULB  
127 R.M. 17  
CITY OF ELK GROVE  
SACRAMENTO COUNTY, CALIFORNIA



CLAYBAR ENGINEERING, INC.  
9354 ELK GROVE-FLOIRIN ROAD  
ELK GROVE, CA 95624  
Ph.: 916-684-7301  
Fax: 916-684-2627  
(PT. NO. 1086)