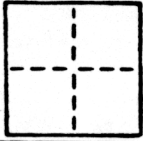


# CORNER RECORD

COUNTY OF SACRAMENTO T. \_\_\_\_\_ R. \_\_\_\_\_ MERIDIAN \_\_\_\_\_ CALIFORNIA

CORNER TYPE: GOVT. CORNER  MEANDER  RANCHO  CONTROL  OTHER

CORNER IDENTIFICATION - DATE OF VISIT MAY 9 1989



LOT 67 of SIERRA OAKS VISTA # 3  
21 RM 22

CORNER - LEFT AS FOUND  POUND AND TAGGED  REESTABLISHED OBLITERATED CORNER  REBUILT

PHYSICAL DESCRIPTION OF CORNER FOUND; EVIDENCE AND METHOD USED TO IDENTIFY OR REESTABLISH

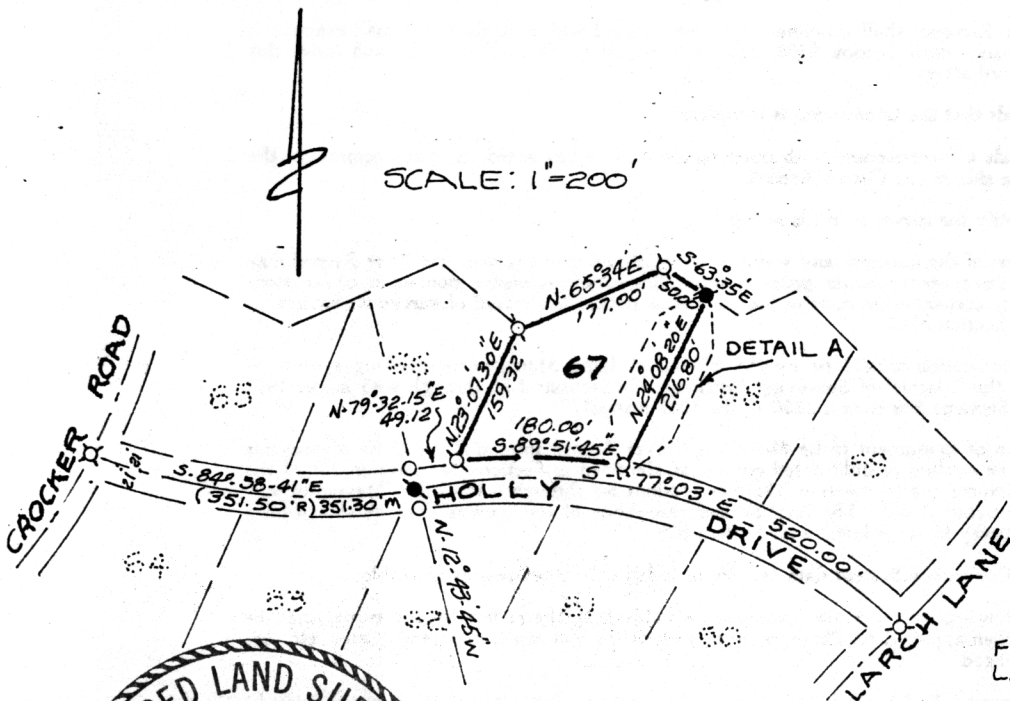
SEE SKETCH

PHYSICAL DESCRIPTION OF MONUMENTS REBUILT OR PERPETUATED

SEE SKETCH

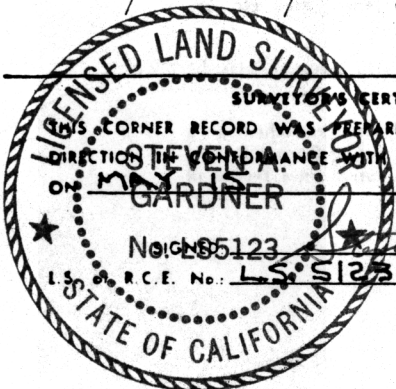
CALIFORNIA COORDINATE SYSTEM ORDER: FIRST  SECOND  THIRD   
 STATIONS USED: NGS (USC & GS)  STATE  COUNTY  OTHER  STATION \_\_\_\_\_ STATION \_\_\_\_\_  
 ZONE \_\_\_\_\_ ELEVATION \_\_\_\_\_ NORTHINGS (Y) \_\_\_\_\_ EASTINGS (X) \_\_\_\_\_

SKETCH: (Include reference tie or witness points, remarks and topo of area)



## LEGEND

- ⊗ = FND. 3/4" I.P., NO TAG
  - = FND. 50d SPIKE
  - ⊠ = SET 3/4" REBAR, L.S. 5123
  - ✕ = STEEL FENCE POST TAGGED L.S. 5123
  - = DIMENSION POINT
- FND. TAG IN CONC., L.S. 2457
- FND. 1" IP L.S. 2457
- DETAIL "A" N.T.S.



**SURVEYOR'S CERTIFICATE**  
 THIS CORNER RECORD WAS PREPARED BY ME OR UNDER MY DIRECTION IN CONFORMANCE WITH THE LAND SURVEYORS ACT OF MAY 15, 1927.  
 BY: STEVE GARDNER 1989  
 No. LS 5123  
 L.S. R.C.E. No.: LS 5123

SEAL

**COUNTY SURVEYOR'S CERTIFICATE**  
 THE CORNER RECORD WAS RECEIVED MAY 23 1989  
 AND EXAMINED AND FILED MAY 25 1989  
 BY: [Signature]  
 TITLE: Supervising Engineering Tech  
 DOCUMENT No. 231  
 STATEMENT ON BACK OF SHEET

YES  NO