

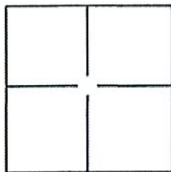
CORNER RECORD

Document Number 2309

City of ELK GROVE

County of SACRAMENTO, California

Brief Legal Description A PORTION OF "SUNBURST SOLAR RANCHETTES, UNIT NO. 2", 141 R.M. 30, A.P. MAP: BK. 134, PG. 056



CORNER TYPE

Government Corner Control
 Meander Property
 Rancho Other

Date of Survey 9-29-09

COORDINATES(Optional)

N. _____
 E. _____
 Zone _____ NAD27 NAD83
 NAD83 Epoch _____
 Elevation _____
 Vert. Datum: NGVD29 NAV88
 Meas. Units: Metric Imperial

A PORTION OF RANCHO OMOCHUMNES

Corner - Left as found Found and tagged Established Reestablished Rebuilt

Identification and type of corner found: Evidence used to identify or procedure used to establish or reestablish the corner:

FOUND 3/4" IRON PIPE, NO TAG, LOCATED AT THE EAST END OF MENLO OAKS COURT CENTERLINE CURVE ADJACENT TO LOT 15 AS SHOWN ON ABOVE SAID MAP.

A description of the physical condition of the monument as found and as set or reset: TAGGED THE FOUND 3/4" IRON PIPE WITH PLASTIC CAP STAMPED L.S. 4154.

SURVEYOR'S STATEMENT

This Corner Record was prepared by me or under my direction in conformance with the Land Surveyor's Act on 11-07, 2009.

Signed Terry L. Castle P.L.S. or R.C.E. Number L.S. 4154



COUNTY SURVEYOR'S STATEMENT

This Corner Record was received 5/5, 2010 and examined and filed 5/7, 2010.

Signed Larry S. Savio P.L.S. or R.C.E. Number 7965

Title ASSOC. L.S.

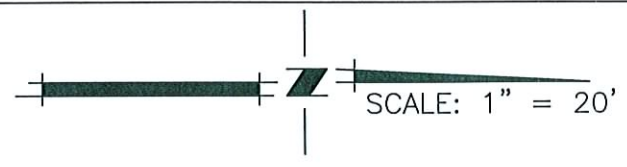
County Surveyor's Comment _____



SUNBURST SOLAR RANCHETTES
UNIT NO. 2
141 R.M. 30

CORNER RECORD
DOC. NO. _____

SCALE: 1" = 20'



C/L MENOLO OAKS COURT

PROPERTY LINE

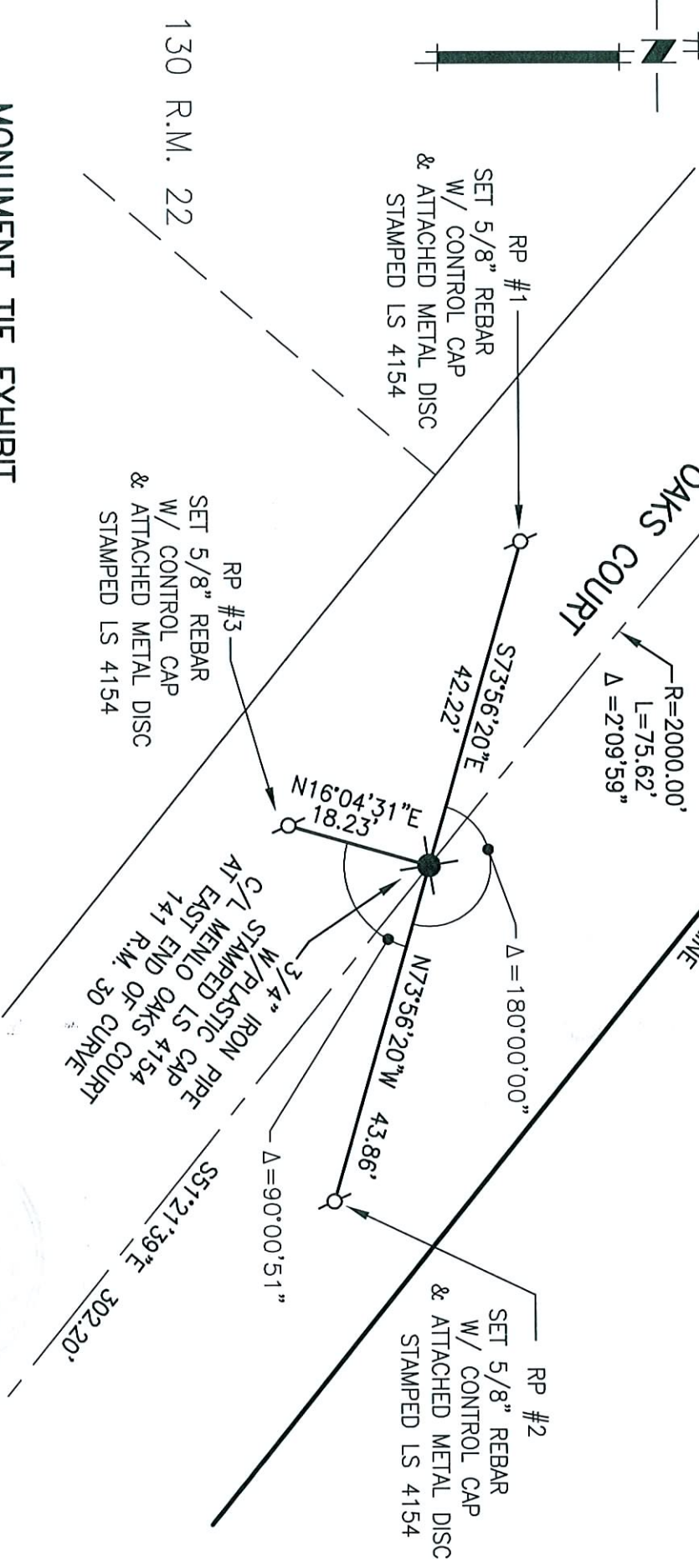
LOT 15

RP #1
SET 5/8" REBAR
W/ CONTROL CAP
& ATTACHED METAL DISC
STAMPED LS 4154

RP #2
SET 5/8" REBAR
W/ CONTROL CAP
& ATTACHED METAL DISC
STAMPED LS 4154

RP #3
SET 5/8" REBAR
W/ CONTROL CAP
& ATTACHED METAL DISC
STAMPED LS 4154

3/4" IRON PIPE
W/ PLASTIC CAP
STAMPED LS 4154
C/L MENOLO OAKS COURT
AT EAST END OF CURVE
141 R.M. 30



130 R.M. 22

CENTERLINE MENOLO OAKS COURT
AT EAST END OF CURVE

141 R.M. 30

CITY OF ELK GROVE

SACRAMENTO COUNTY, CALIFORNIA



CLAYBAR ENGINEERING, INC.

9354 ELK GROVE-FLOIRIN ROAD
ELK GROVE, CA 95624
Ph.: 916-684-7301
Fax: 916-684-2627
(PT. NO. 1003)

PAGE 2 OF 2