

# CORNER RECORD

Document Number 2269

City of ELK GROVE

County of SACRAMENTO, California

Brief Legal Description A PORTION OF "SHELDON HILLS", 266 R.M. 8, A.P. MAP: BK. 122, PG. 44

SEC
22

### CORNER TYPE

Government Corner  Control   
 Meander  Property   
 Rancho  Other

Date of Survey 8-25-09

### COORDINATES(Optional)

N. \_\_\_\_\_  
 E. \_\_\_\_\_  
 Zone \_\_\_\_\_ NAD27  NAD83   
 NAD83 Epoch \_\_\_\_\_  
 Elevation \_\_\_\_\_  
 Vert. Datum: NGVD29  NAV88   
 Meas. Units: Metric  Imperial

T. 7 N., R. 6 E. M.D.M

Corner - Left as found  Found and tagged  Established  Reestablished  Rebuilt

Identification and type of corner found: Evidence used to identify or procedure used to establish or reestablish the corner:

FOUND 3/4" CAPPED IRON PIPE, NUMBERS ILLEGIBLE, LOCATED AT THE CENTERLINE INTERSECT OF CHAMBRAY ROAD AND DENIM ROAD AS SHOWN ON SAID MAP.

A description of the physical condition of the monument as found and as set or reset: RE-TAGGED FOUND 3/4" IRON PIPE WITH PLASTIC CAP STAMPED L.S. 4154.

### SURVEYOR'S STATEMENT

This Corner Record was prepared by me or under my direction in conformance with the Land Surveyor's Act on 11-07, 2009.

Signed: Terry L. Castle (P.L.S.) or R.C.E. Number L.S. 4154



### COUNTY SURVEYOR'S STATEMENT

This Corner Record was received 5/5, 2010 and examined and filed 5/6, 2010.

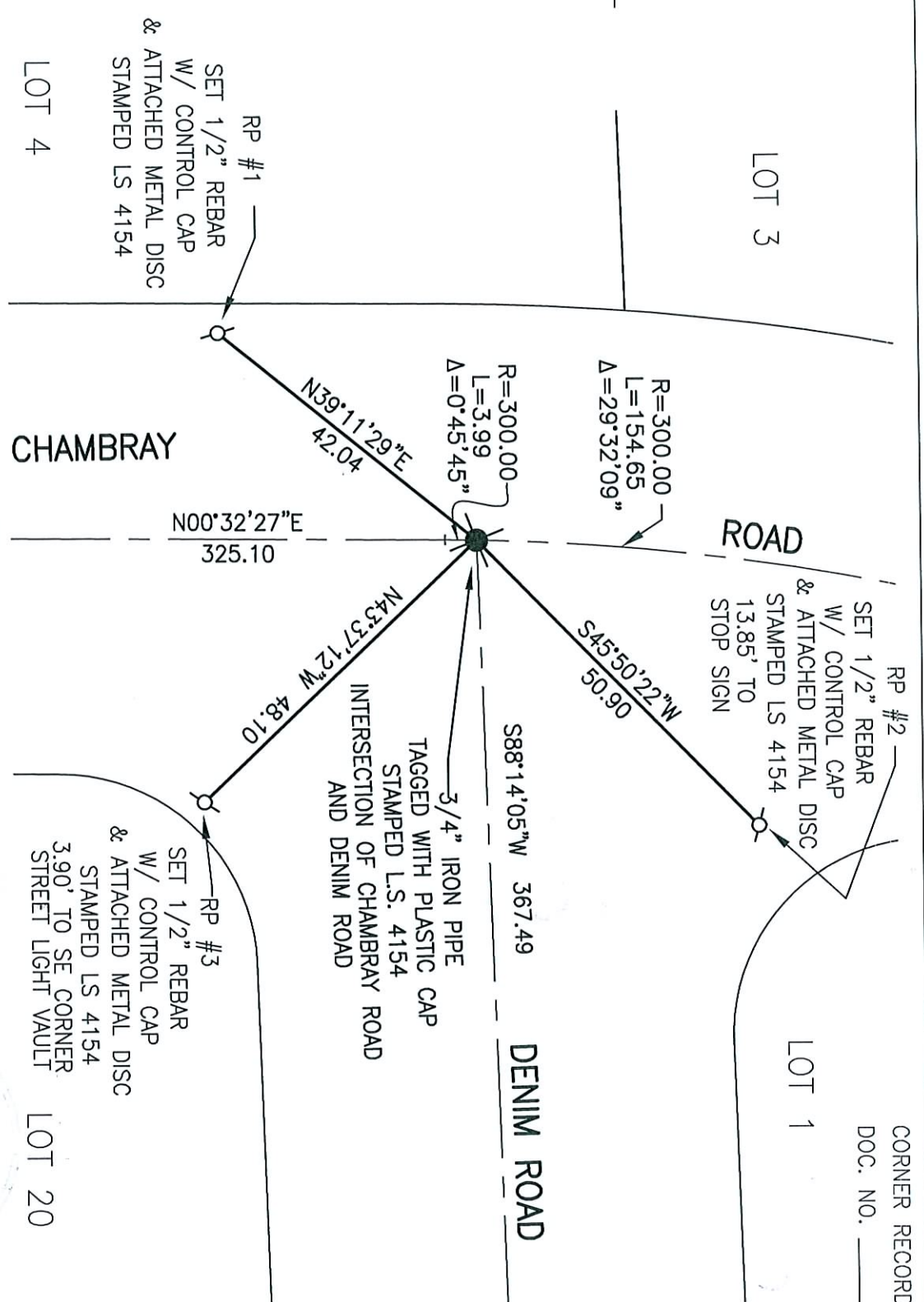
Signed: [Signature] (P.L.S.) or R.C.E. Number 7965

Title ASSOC. L.S.

County Surveyor's Comment \_\_\_\_\_



CORNER RECORD  
 DOC. NO. \_\_\_\_\_



NOTE:  
 THE TIES FOR THE FOUND MONUMENT AT THE INTERSECTION OF CHAMBRAY ROAD AND DENIM ROAD ARE THE SAME TIES USED FOR THE FOUND MONUMENT AT THE SOUTH END OF THE CURVE AND ARE DESIGNATED WITH BEARINGS AND DISTANCES..

**MONUMENT TIE EXHIBIT**

INTX DENIM ROAD AND  
 CHAMBRAY ROAD, 266 R.M. 8  
 CITY OF ELK GROVE  
 SACRAMENTO COUNTY, CALIFORNIA



CLAYBAR ENGINEERING, INC.  
 9354 ELK GROVE-FLOREN ROAD  
 ELK GROVE, CA 95624  
 Ph.: 916-684-7301  
 Fax: 916-684-2627  
 (PT. NO. 1050)