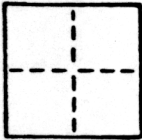


CORNER RECORD

COUNTY OF SACRAMENTO MERIDIAN CALIFORNIA

CORNER TYPE: GOVT. CORNER MEANDER RANCHO CONTROL OTHER

CORNER IDENTIFICATION — DATE OF VISIT APRIL 4 1989



LOT 566 OF SWANSTON PARK #2

CORNER — LEFT AS FOUND FOUND AND TAGGED REESTABLISHED OBLITERATED CORNER REBUILT

PHYSICAL DESCRIPTION OF CORNER FOUND; EVIDENCE AND METHOD USED TO IDENTIFY OR REESTABLISH

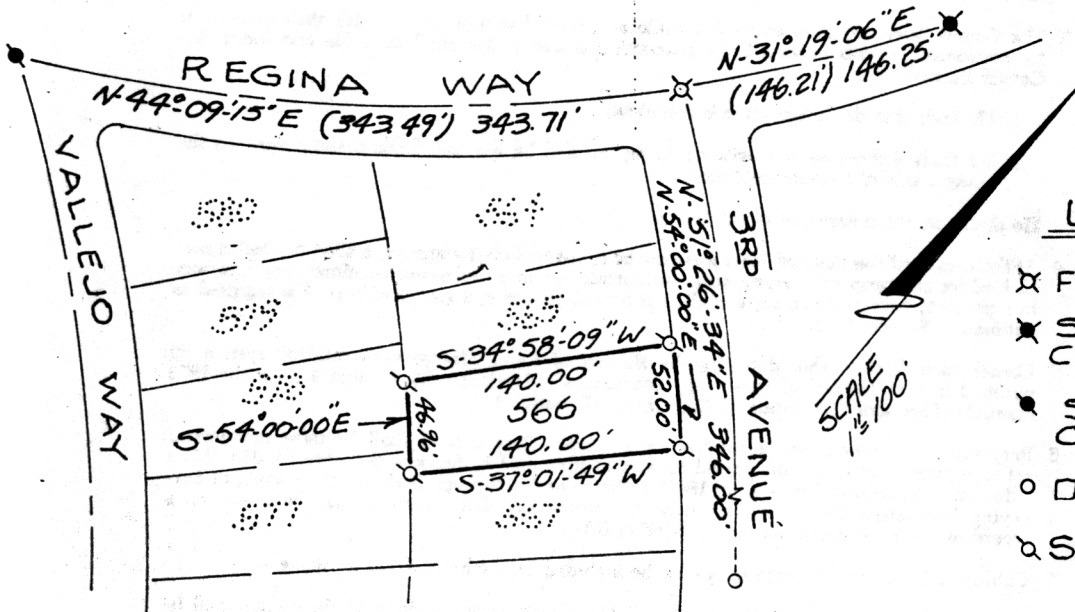
SEE SKETCH

PHYSICAL DESCRIPTION OF MONUMENTS REBUILT OR PERPETUATED

SEE SKETCH

CALIFORNIA COORDINATE SYSTEM ORDER: FIRST SECOND THIRD
 STATIONS USED: NGS (USC & GS) STATE COUNTY OTHER STATION _____ STATION _____
 ZONE _____ ELEVATION _____ NORTHINGS (Y) _____ EASTINGS (X) _____

SKETCH: (Include reference tie or witness points, remarks and topo of area)



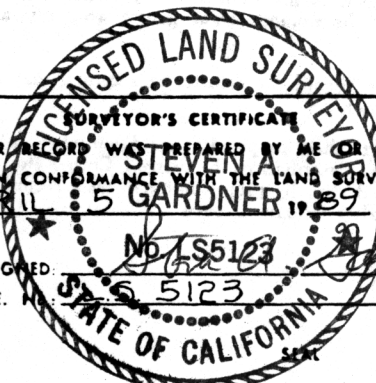
- ### LEGEND
- ✕ FND. NAIL & SHINER
 - ✕ SET PENCIL + PER CITY TIES
 - ✕ SET CONC. NAIL PER CITY TIES
 - DIMENSION POINT
 - ✕ SET 3/4" REBAR L.S. 5123

SURVEYOR'S CERTIFICATE

THIS CORNER RECORD WAS PREPARED BY ME OR UNDER MY DIRECTION IN CONFORMANCE WITH THE LAND SURVEYORS ACT ON APRIL 5 1989

SIGNED: STEVEN A. GARDNER

L.S. or R.C.E. No. 5123



COUNTY SURVEYOR'S CERTIFICATE

THE CORNER RECORD WAS RECEIVED APRIL 12 1989 AND EXAMINED AND FILED APRIL 22 1989

BY: [Signature]

TITLE: Supervising Engineering Tech.

DOCUMENT No. 226

STATEMENT ON BACK OF SHEET YES NO