

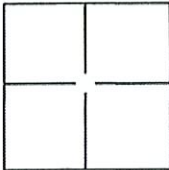
CORNER RECORD

Document Number 2259

City of ELK GROVE

County of SACRAMENTO, California

Brief Legal Description A PORTION OF "VINEYARD ESTATES", 180 R.M. 23, A.P. MAP: BK. 126, PG. 41



CORNER TYPE

Government Corner Control
 Meander Property
 Rancho Other

Date of Survey 8-11-09

COORDINATES(Optional)

N. _____
 E. _____
 Zone _____ NAD27 NAD83
 NAD83 Epoch _____
 Elevation _____
 Vert. Datum: NGVD29 NAV88
 Meas. Units: Metric Imperial

BEING A PORTION OF RANCHO OMOCHUMNES

Corner - Left as found Found and tagged Established Reestablished Rebuilt

Identification and type of corner found: Evidence used to identify or procedure used to establish or reestablish the corner:

FOUND 3/4" IRON PIPE, WITHOUT TAG, 1/8" ABOVE SURFACE, LOCATED AT THE CENTERLINE CORNER OF CHAMBEAU WAY ADJACENT TO LOTS 5 AND 16 AS SHOWN ON SAID MAP.

A description of the physical condition of the monument as found and as set or reset: TAGGED FOUND 3/4" IRON PIPE WITH PLASTIC CAP STAMPED L.S. 4154.

SURVEYOR'S STATEMENT

This Corner Record was prepared by me or under my direction in conformance with

the Land Surveyor's Act on 11-07, 2009.

Signed Terry L. Castle P.L.S. or R.C.E. Number L.S. 4154



COUNTY SURVEYOR'S STATEMENT

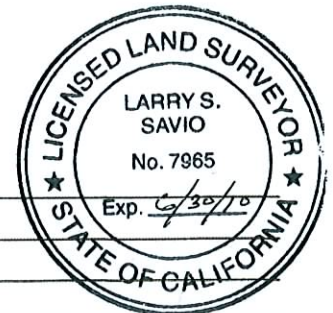
This Corner Record was received 5/5, 2010 and examined

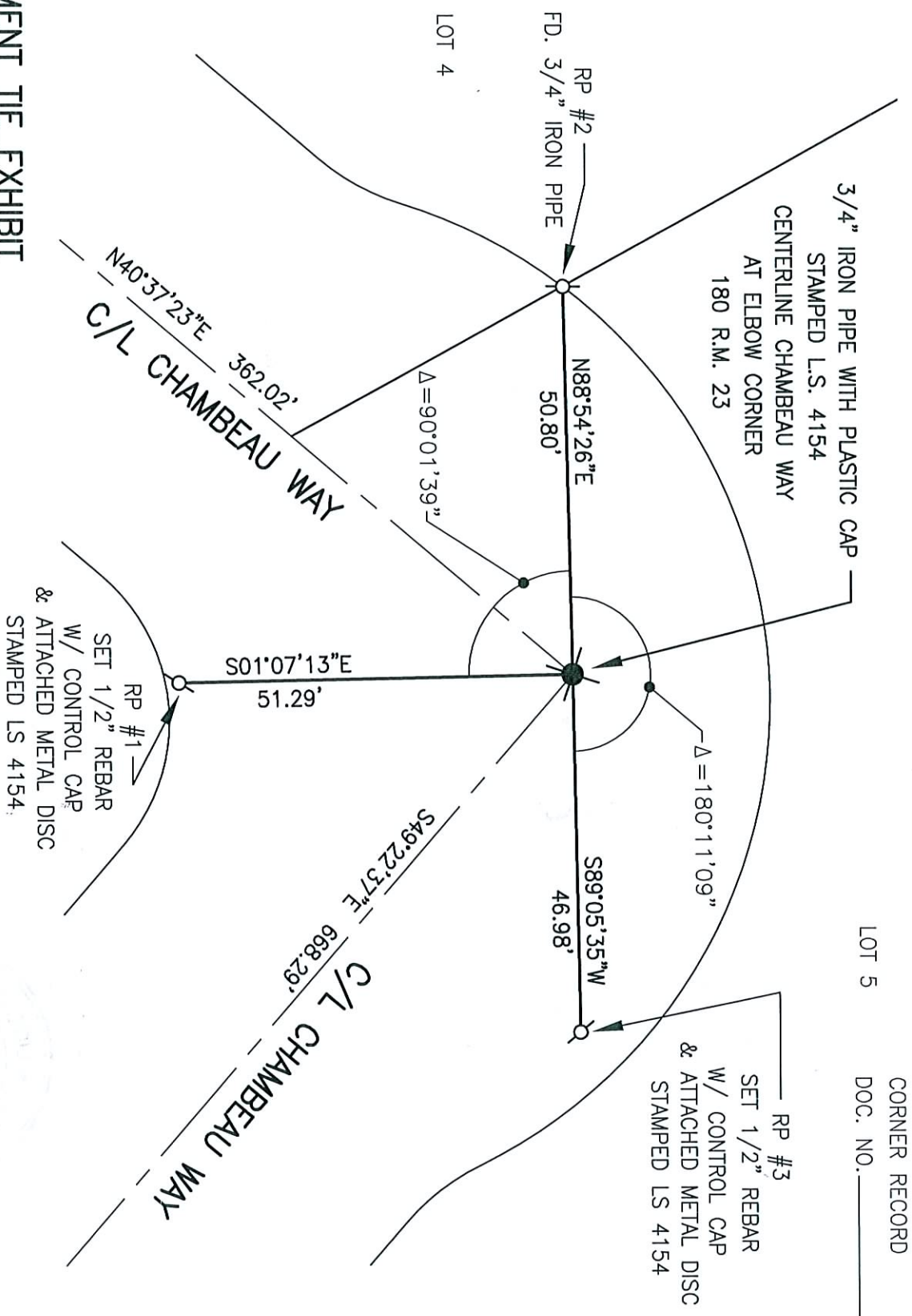
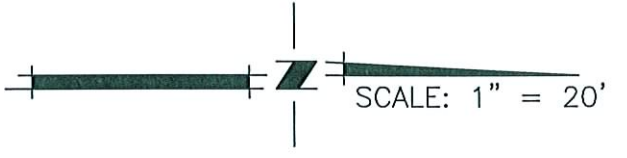
and filed 5/6, 2010.

Signed [Signature] P.L.S. or R.C.E. Number 7965

Title ASSOC. LAND SURVEYOR

County Surveyor's Comment _____





MONUMENT TIE EXHIBIT
 CENTERLINE CHAMBEAU WAY
 AT CORNER ELBOW
 180 R.M. 23
 CITY OF ELK GROVE
 SACRAMENTO COUNTY, CALIFORNIA



CLAYBAR ENGINEERING, INC.
 9354 ELK GROVE-FLOIRIN ROAD
 ELK GROVE, CA 95624
 Ph.: 916-684-7301
 Fax: 916-684-2627
 (PT. NO. 1039)