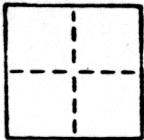


# CORNER RECORD

COUNTY OF SACRAMENTO T. \_\_\_\_\_ R. \_\_\_\_\_ MERIDIAN \_\_\_\_\_ CALIFORNIA

CORNER TYPE: GOVT. CORNER  MEANDER  RANCHO  CONTROL  OTHER

CORNER IDENTIFICATION — DATE OF VISIT MARCH 29 1989



*EAST LINE OF LOT 208 OF ARDEN OAKS NO. 4, 26 RM 21*

CORNER — LEFT AS FOUND  FOUND AND TAGGED  REESTABLISHED OBLITERATED CORNER  REBUILT

PHYSICAL DESCRIPTION OF CORNER FOUND; EVIDENCE AND METHOD USED TO IDENTIFY OR REESTABLISH

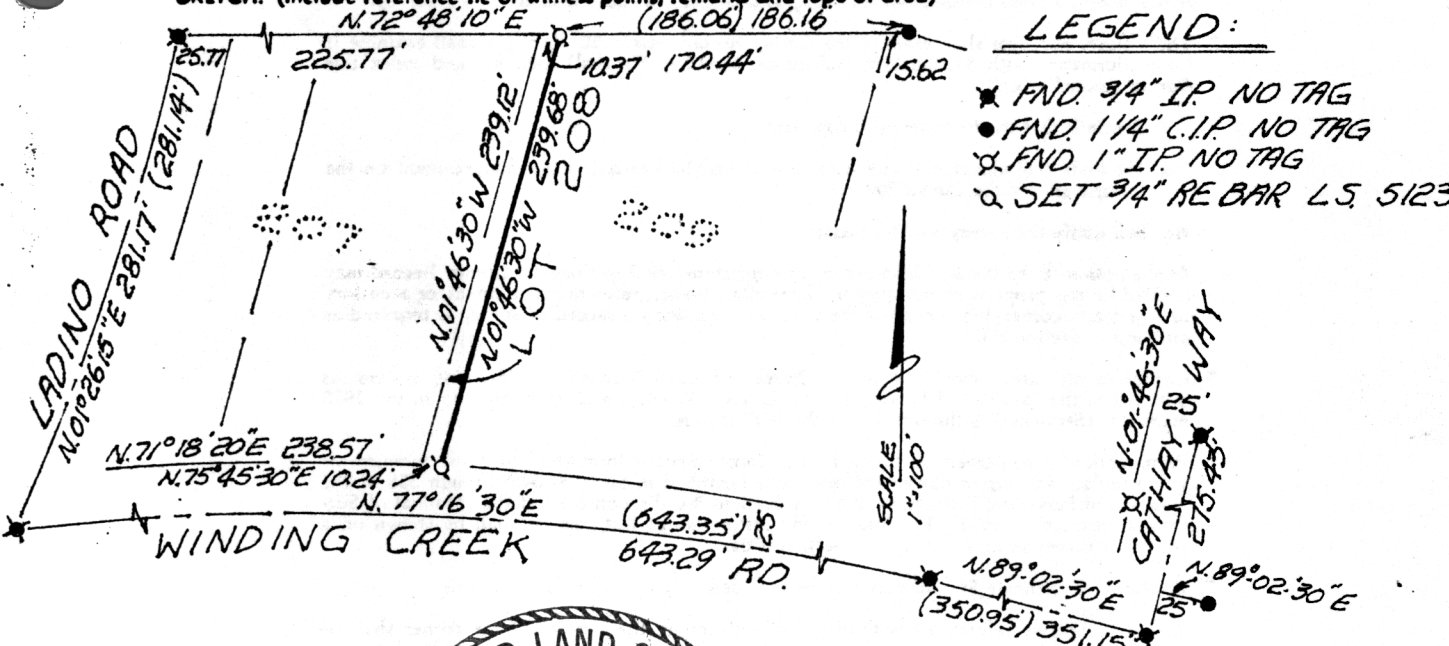
*SEE SKETCH*

PHYSICAL DESCRIPTION OF MONUMENTS REBUILT OR PERPETUATED

*SEE SKETCH*

CALIFORNIA COORDINATE SYSTEM ORDER: FIRST  SECOND  THIRD   
 STATIONS USED: NGS (USC & GS)  STATE  COUNTY  OTHER  STATION \_\_\_\_\_ STATION \_\_\_\_\_  
 ZONE \_\_\_\_\_ ELEVATION \_\_\_\_\_ NORTHINGS (Y) \_\_\_\_\_ EASTINGS (X) \_\_\_\_\_

SKETCH: (Include reference tie or witness points, remarks and topo of area)



**LEGEND:**

- ★ FND. 3/4" I.P. NO TAG
- FND. 1/4" C.I.P. NO TAG
- ✕ FND. 1" I.P. NO TAG
- SET 3/4" REBAR L.S. 5123



SURVEYOR'S CERTIFICATE  
 THIS CORNER RECORD WAS PREPARED BY ME OR UNDER MY DIRECTION IN CONFORMANCE WITH THE LAND SURVEYORS ACT ON MARCH 30 1989 No. LS5123  
 SIGNED: Steven A. Gardner  
 L.S. or R.C.E. No. LS 5123

COUNTY SURVEYOR'S CERTIFICATE  
 THE CORNER RECORD WAS RECEIVED APRIL 4, 1989  
 AND EXAMINED AND FILED APRIL 15, 1989  
 BY: Charles Parker  
 TITLE: Supervising Engineering Tech  
 DOCUMENT No. 225  
 STATEMENT ON BACK OF SHEET

YES  NO