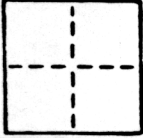


# CORNER RECORD

COUNTY OF SACRAMENTO T. \_\_\_\_\_ R. \_\_\_\_\_ MERIDIAN \_\_\_\_\_ CALIFORNIA  
 CORNER TYPE: GOVT. CORNER  MEANDER  RANCHO  CONTROL  OTHER   
 CORNER IDENTIFICATION — DATE OF VISIT MARCH 22 1989



LOT 6 SUNNY DELL ESTATES 65 BM 11

CORNER — LEFT AS FOUND  FOUND AND TAGGED  REESTABLISHED OBLITERATED CORNER  REBUILT

PHYSICAL DESCRIPTION OF CORNER FOUND; EVIDENCE AND METHOD USED TO IDENTIFY OR REESTABLISH

SEE SKETCH

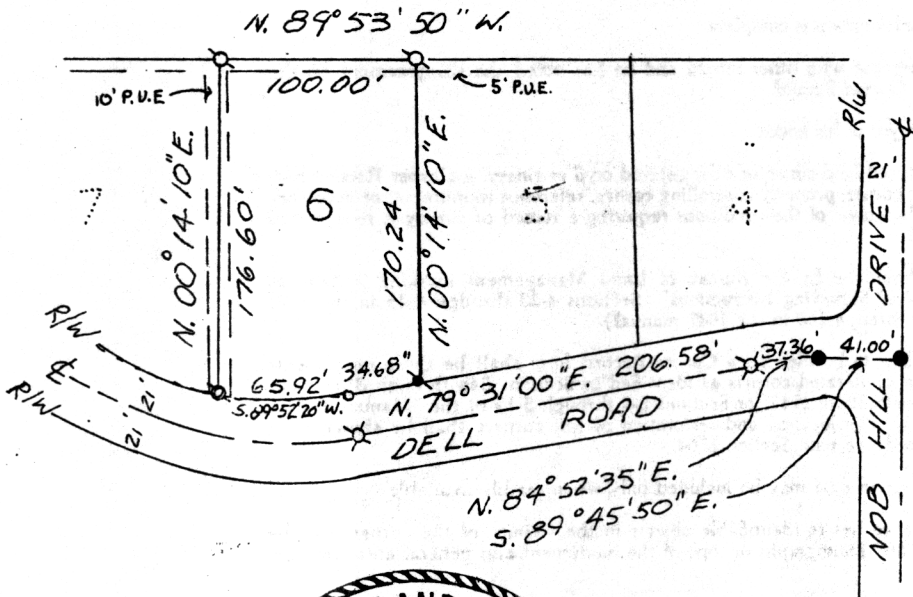
PHYSICAL DESCRIPTION OF MONUMENTS REBUILT OR PERPETUATED

SEE SKETCH

CALIFORNIA COORDINATE SYSTEM ORDER: FIRST  SECOND  THIRD   
 STATIONS USED: NGS (USC & GS)  STATE  COUNTY  OTHER  STATION \_\_\_\_\_ STATION \_\_\_\_\_  
 ZONE \_\_\_\_\_ ELEVATION \_\_\_\_\_ NORTHINGS (Y) \_\_\_\_\_ EASTINGS (X) \_\_\_\_\_

SKETCH: (Include reference tie or witness points, remarks and topo of area)

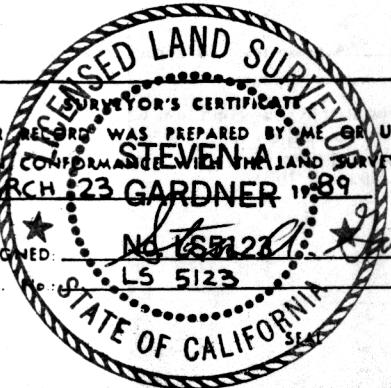
SCALE  
1" = 100'



**LEGEND :**

- FND. CONC. NAIL
- FND. 1" STEEL PIN
- FND. 5/8" RB RCE 18406
- SET 3/4" RB LS 5123

THIS CORNER RECORD WAS PREPARED BY ME OR UNDER MY DIRECTION IN CONFORMANCE WITH THE LAND SURVEYORS ACT ON MARCH 23 1989  
 SIGNED: Steven A. Gardner  
 L.S. or R.C.E. No. LS 5123



COUNTY SURVEYOR'S CERTIFICATE  
 THE CORNER RECORD WAS RECEIVED MARCH 29 1989  
 AND EXAMINED AND FILED SPR 10 19 89  
 BY: Land Surveyor  
 TITLE: Supervisors Engineering Geth  
 DOCUMENT No 224  
 STATEMENT ON BACK OF SHEET YES  NO