

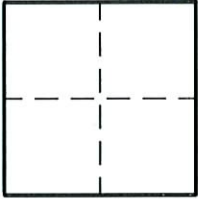
CORNER RECORD

Document Number 2239

City of ELK GROVE

County of SACRAMENTO, California

Brief Legal Description _____



CORNER TYPE

Government Corner Control
Meander Property
Rancho Other
Date of Survey _____

CORNER TYPE (Optional)

N. _____
E. _____
Zone _____ Datum _____
Elev. _____

Corner - Left as found Found and tagged Established Reestablished Rebuilt

Identification and type of corner found: Evidence used to identify or procedure used to establish or reestablish the corner.
FOUND COPPERWELD IN CENTERLINE OF KAMMERER ROAD, PER 10 PM 27, S.C.R.

A description of the physical condition of the monument as found and as set or reset. _____

SURVEYOR'S STATEMENT

This Corner Record was prepared by me or under my direction in conformance with the Land Surveyor's Act on December 1, 2009.

Signed Scott A. Bryan (L.S.) or R.C.E. Number 7228.



COUNTY SURVEYOR'S STATEMENT

This Corner Record was received 12/17 2009.

and filed 12/24 2009.

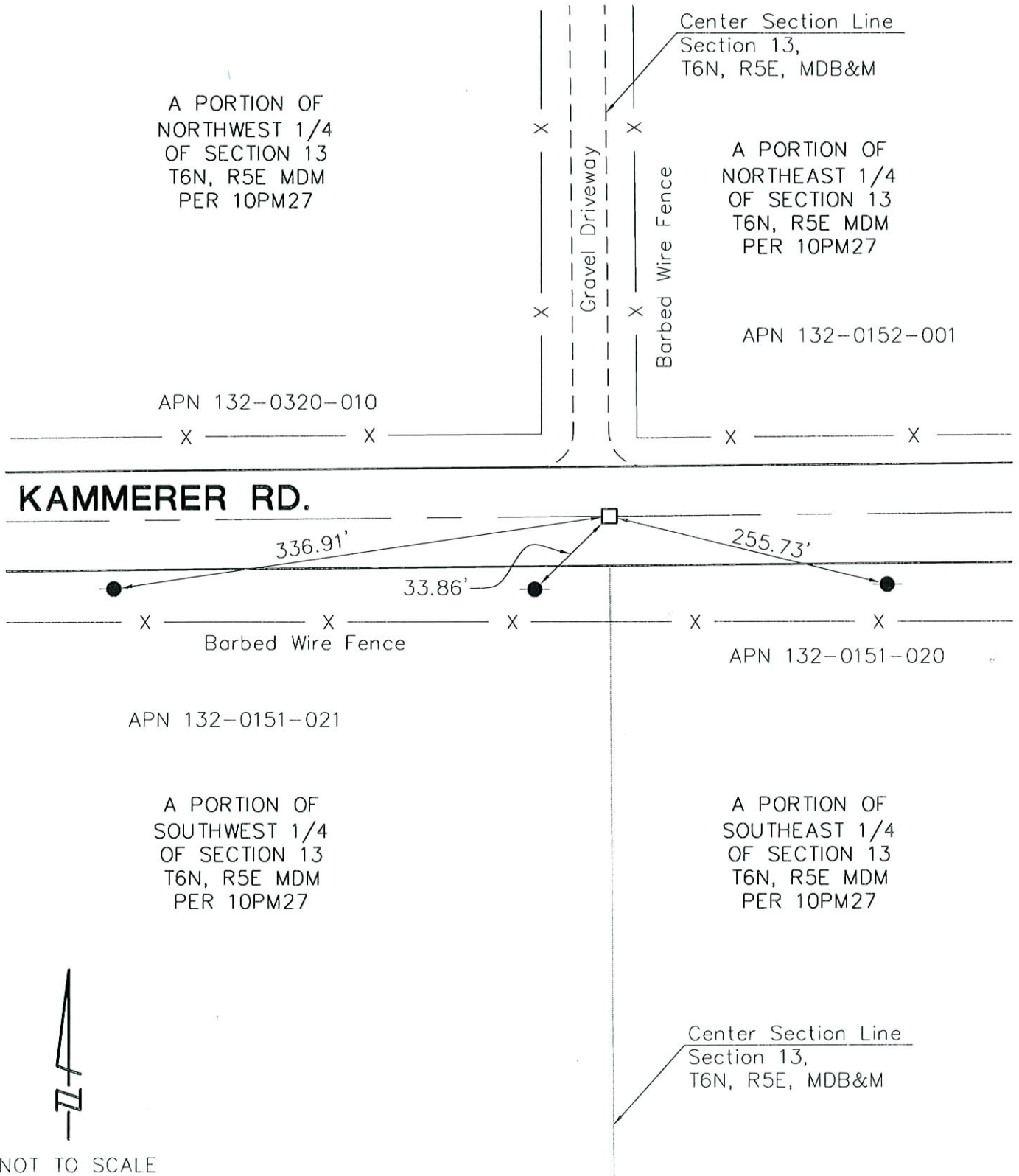
Signed [Signature] Title ASSOC. L.S.

County Surveyor's Comment _____

LEGEND

Document Number _____

- SET NAIL & TAG STAMPED LS 7228 ON POWER POLE, NORTHERLY SIDE
- FOUND COPPERWELD, WEST 1/4-CORNER SECTION 13, T6N, R5E, MDM PER 10PM27, S.C.R.
- ▭ STREET ADDRESS



NOT TO SCALE