

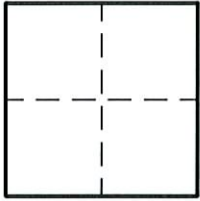
# CORNER RECORD

Document Number 2229

City of ELK GROVE

County of SACRAMENTO, California

Brief Legal Description \_\_\_\_\_



### CORNER TYPE

Government Corner  Control   
Meander  Property   
Rancho  Other   
Date of Survey \_\_\_\_\_

### CORNER TYPE (Optional)

N. \_\_\_\_\_  
E. \_\_\_\_\_  
Zone \_\_\_\_\_ Datum \_\_\_\_\_  
Elev. \_\_\_\_\_

**Corner** - Left as found  Found and tagged  Established  Reestablished  Rebuilt

Identification and type of corner found: Evidence used to identify or procedure used to establish or reestablish the corner.  
FOUND SACRAMENTO COUNTY NAIL & WASHER IN EASTERLY RIGHT OF WAY OF FRANKLIN BOULEVARD AT EDGE OF PAVEMENT; TIED AS SHOWN WITH LEAD & BRASS TAG STAMPED PLS 7228. AFTER CONSTRUCTION RESET FROM TIES WITH 60d NAIL & WASHER STAMPED PLS 7228 IN EASTERLY RIGHT OF WAY OF FRANKLIN BOULEVARD AT EDGE OF PAVEMENT.

A description of the physical condition of the monument as found and as set or reset. \_\_\_\_\_  
\_\_\_\_\_  
\_\_\_\_\_

### SURVEYOR'S STATEMENT

This Corner Record was prepared by me or under my direction in conformance with the Land Surveyor's Act on December 1, 2009.

Signed Scott A. Bryan (L.S.) or R.C.E. Number 7228



### COUNTY SURVEYOR'S STATEMENT

This Corner Record was received 12/17 2009.

and filed 12/23 2009.

Signed Larry S. Savio Title ASSOC. L.S.

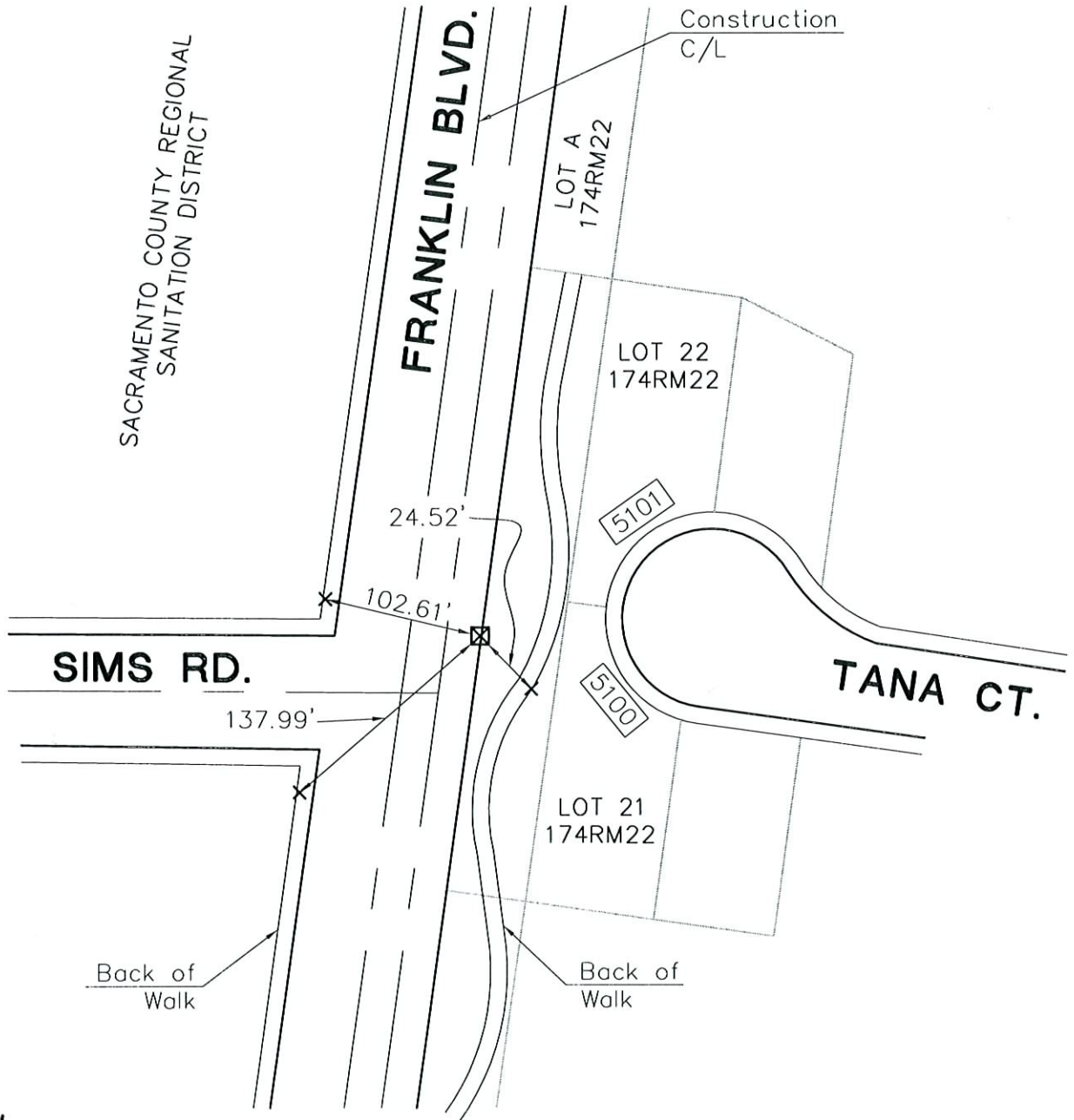


County Surveyor's Comment \_\_\_\_\_  
\_\_\_\_\_  
\_\_\_\_\_

# LEGEND

Document Number \_\_\_\_\_

- x SET LEAD & TAG STAMPED LS 7228, AT BACK OF WALK
- ☒ SET 60d NAIL & WASHER STAMPED PLS 7228
- STREET ADDRESS



NOT TO SCALE