

CORNER RECORD

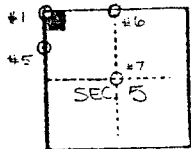
222

COUNTY OF SACRAMENTO T. 6 N. R. 7 E. M.D.B. & MERIDIAN CALIFORNIA

CORNER TYPE: GOVT. CORNER  MEANDER  RANCHO  CONTROL  OTHER

CORNER IDENTIFICATION - DATE OF VISIT \_\_\_\_\_ 19\_\_

9 PM 34



CORNER - LEFT AS FOUND  FOUND AND TAGGED  REESTABLISHED OBLITERATED CORNER  REBUILT

PHYSICAL DESCRIPTION OF CORNER FOUND; EVIDENCE AND METHOD USED TO IDENTIFY OR REESTABLISH



PHYSICAL DESCRIPTION OF MONUMENTS REBUILT OR PERPETUATED

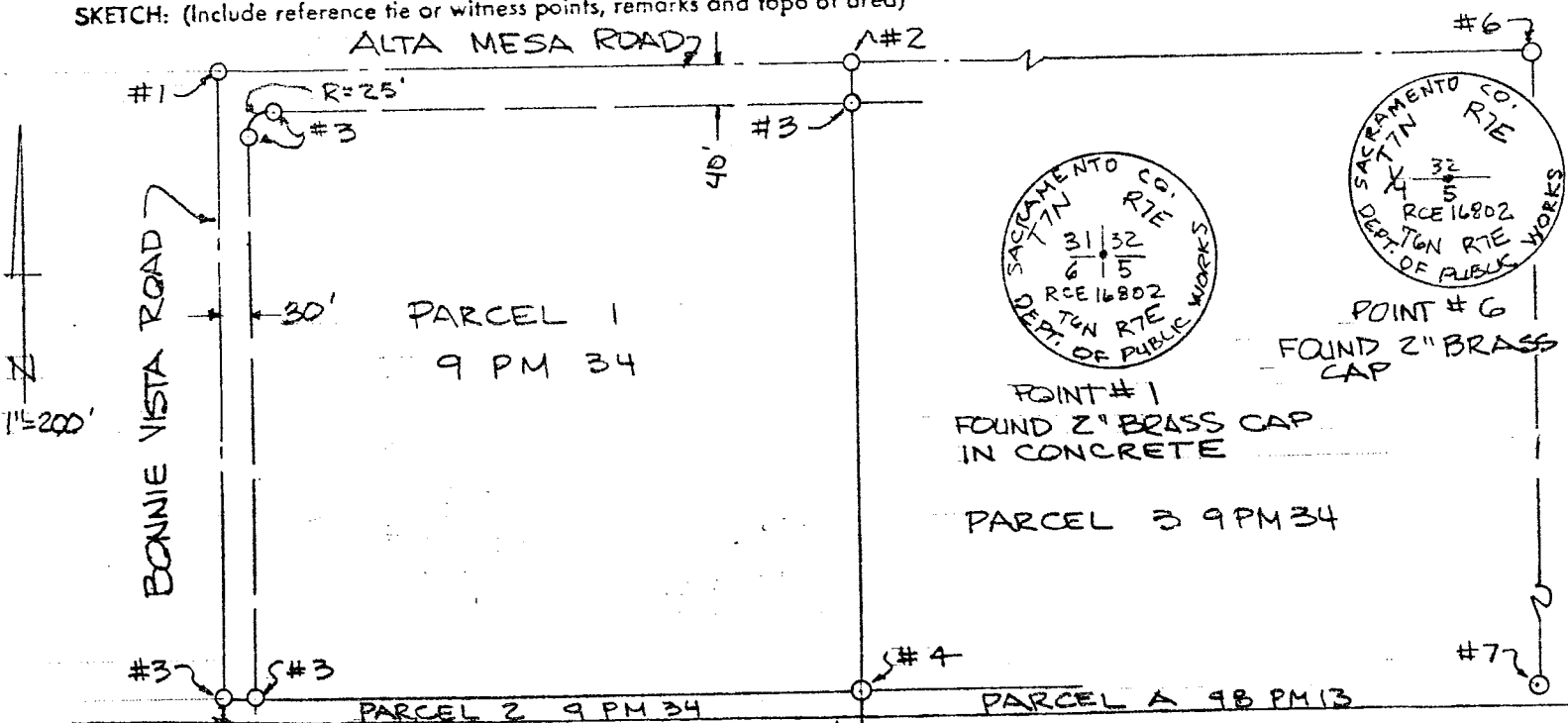
- NO. 2 - SET CONC. NAIL AND TAG LHT-LS4900
- NO. 3 - SET NO. 5 REBAR TAGGED LHT-LS4900
- NO. 4 - FOUND NO. 5 REBAR PLASTIC CAP LS 4124 0.12' EAST AND 0.15' SOUTH
- NO. 5 - FOUND 3/4" OPEN IRON PIPE NO TAG, NORTHWEST CORNER 144 BM 19
- NO. 7 FOUND 1/4" IRON PIPE TAGGED LS 3185, SOUTHEAST CORNER 144 BM 19

CALIFORNIA COORDINATE SYSTEM ORDER: FIRST  SECOND  THIRD

STATIONS USED: NGS (USC & GS)  STATE  COUNTY  OTHER  STATION \_\_\_\_\_ STATION \_\_\_\_\_

ZONE \_\_\_\_\_ ELEVATION \_\_\_\_\_ NORTHINGS (Y) \_\_\_\_\_ EASTINGS (X) \_\_\_\_\_

SKETCH: (Include reference tie or witness points, remarks and topo of area)



SURVEYOR'S CERTIFICATE

THIS CORNER RECORD WAS PREPARED BY ME OR UNDER MY DIRECTION IN CONFORMANCE WITH THE LAND SURVEYORS ACT ON 3-20 19 89

SIGNED: Laurence H. Turner

L.S. No. 4900

COUNTY SURVEYOR'S CERTIFICATE

THE CORNER RECORD WAS RECEIVED MARCH 22, 1989 AND EXAMINED AND FILED MARCH 23, 1989

BY: [Signature] TITLE: Supervising Engineering Tech

DOCUMENT No. 222