

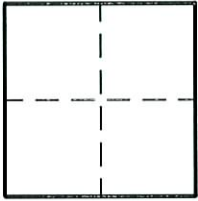
# CORNER RECORD

Document Number 2219

City of ELK GROVE

County of SACRAMENTO, California

Brief Legal Description \_\_\_\_\_



### CORNER TYPE

Government Corner  Control   
 Meander  Property   
 Rancho  Other   
 Date of Survey \_\_\_\_\_

### CORNER TYPE (Optional)

N. \_\_\_\_\_  
 E. \_\_\_\_\_  
 Zone \_\_\_\_\_ Datum \_\_\_\_\_  
 Elev. \_\_\_\_\_

**Corner** - Left as found  Found and tagged  Established  Reestablished  Rebuilt

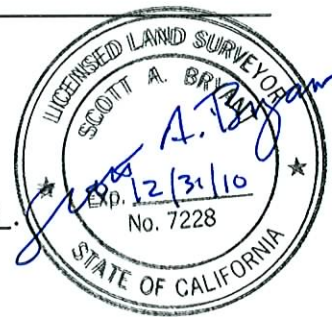
Identification and type of corner found: Evidence used to identify or procedure used to establish or reestablish the corner.  
FOUND 3/4" IRON PIN IN CENTERLINE OF MAZATLAN WAY PER 99 RM 5, S.C.R.

A description of the physical condition of the monument as found and as set or reset. \_\_\_\_\_

### SURVEYOR'S STATEMENT

This Corner Record was prepared by me or under my direction in conformance with the Land Surveyor's Act on November 19, 2009.

Signed Scott A. Bryan L.S. or R.C.E. Number 7228.



### COUNTY SURVEYOR'S STATEMENT

This Corner Record was received 12/17 2009.

and filed 12/23 2009.

Signed Larry S. Savio Title ASSOC. L.S.



County Surveyor's Comment \_\_\_\_\_

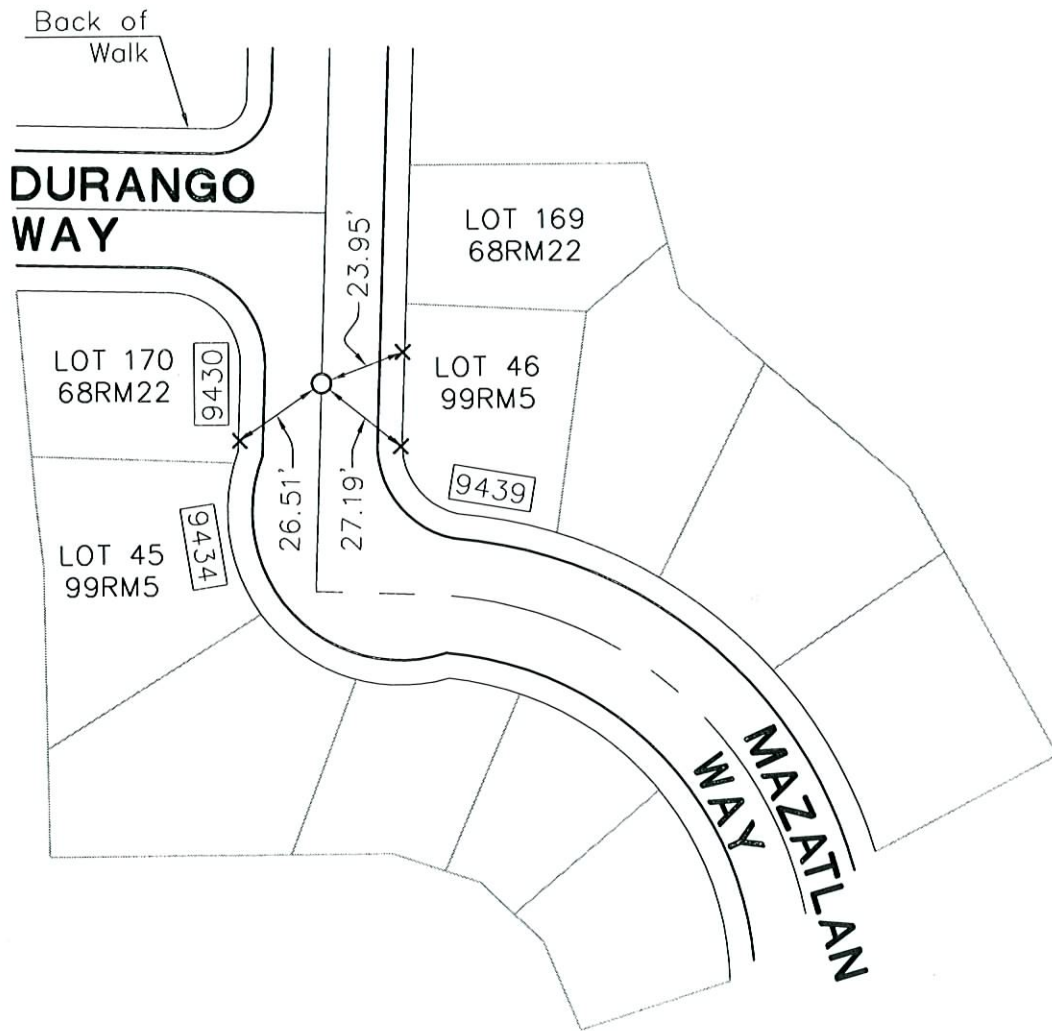
# LEGEND

Document Number \_\_\_\_\_

x SET LEAD & TAG STAMPED LS 7228, AT BACK OF WALK

o FOUND 3/4" IRON PIN PER 99 RM 5, S.C.R.

□ STREET ADDRESS



NOT TO SCALE