

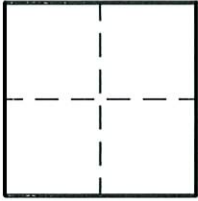
CORNER RECORD

Document Number 2209

City of ELK GROVE

County of SACRAMENTO, California

Brief Legal Description _____



CORNER TYPE

Government Corner Control
 Meander Property
 Rancho Other
 Date of Survey _____

CORNER TYPE (Optional)

N. _____
 E. _____
 Zone _____ Datum _____
 Elev. _____

Corner - Left as found Found and tagged Established Reestablished Rebuilt

Identification and type of corner found: Evidence used to identify or procedure used to establish or reestablish the corner.
FOUND 2" IRON PIPE WITH BRASS CAP, STAMPED "1977 T7N R5E, 35 36 2 1, T6N R5E,
LS 3185" IN MONUMENT WELL IN CENTERLINE OF ELK GROVE BOULEVARD PER 245 RM 2, S.C.R.

A description of the physical condition of the monument as found and as set or reset. _____

SURVEYOR'S STATEMENT

This Corner Record was prepared by me or under my direction in conformance with the Land Surveyor's Act on November 19, _____ 2009.

Signed Scott A. Bryan L.S. or R.C.E. Number 7228.



COUNTY SURVEYOR'S STATEMENT

This Corner Record was received 12/17 2009.

and filed 12/23 2009.

Signed Larry S. Savio Title ASSOC. C.S.

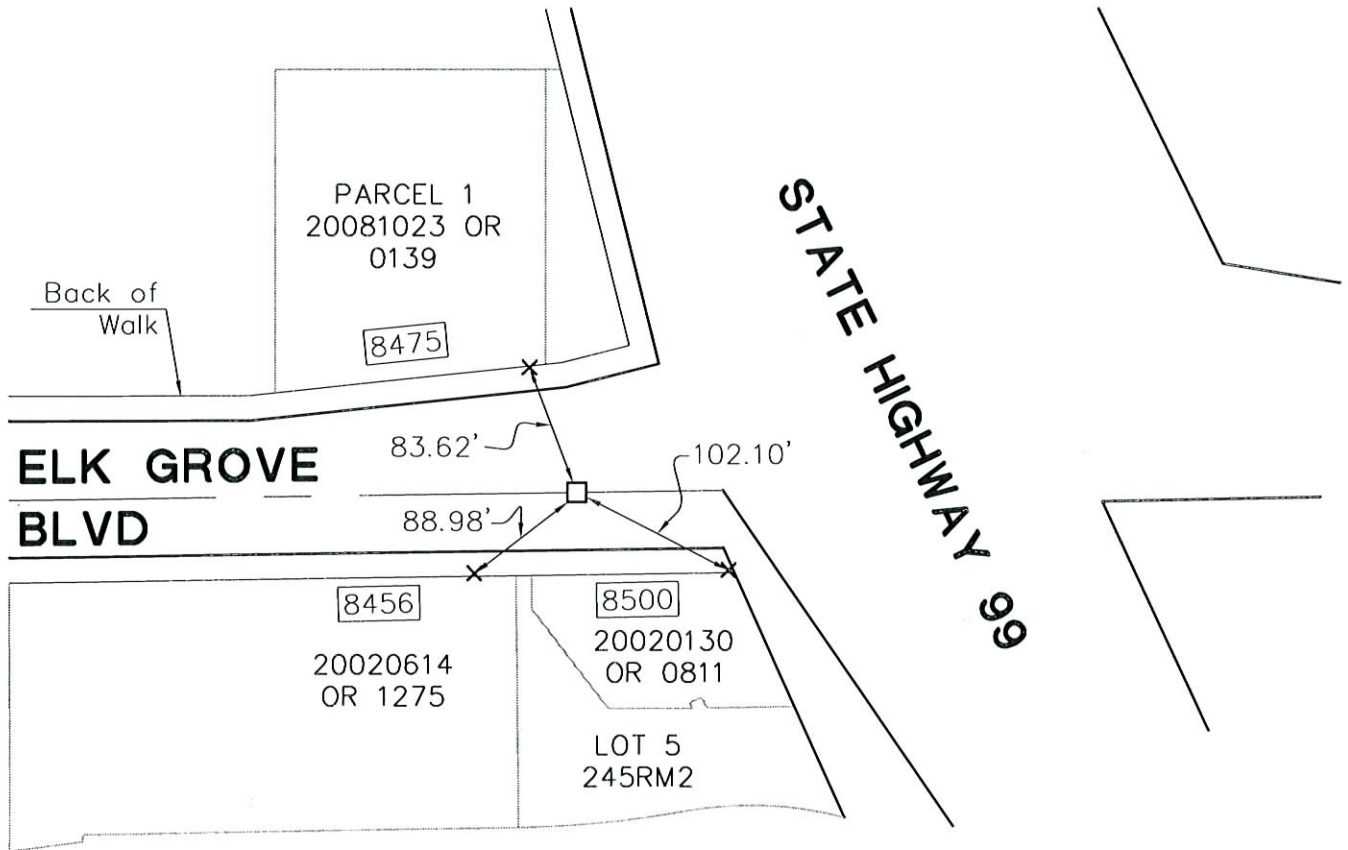


County Surveyor's Comment _____

LEGEND

Document Number _____

- × SET LEAD & TAG STAMPED LS 7228, AT BACK OF WALK
- FOUND 2" IRON PIPE WITH BRASS CAP IN MONUMENT WELL PER 245 RM 2, S.C.R.
- ▭ STREET ADDRESS



NOT TO SCALE