

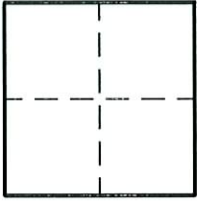
CORNER RECORD

Document Number 2199

City of ELK GROVE

County of SACRAMENTO, California

Brief Legal Description _____



CORNER TYPE

CORNER TYPE (Optional)

Government Corner Control
 Meander Property
 Rancho Other
 Date of Survey _____

N. _____
 E. _____
 Zone _____ Datum _____
 Elev. _____

Corner - Left as found Found and tagged Established Reestablished Rebuilt

Identification and type of corner found: Evidence used to identify or procedure used to establish or reestablish the corner.
FOUND 3/4" IRON PIPE IN CENTERLINE OF BATEY AVENUE PER 96 RM 18, S.C.R.

A description of the physical condition of the monument as found and as set or reset. _____

SURVEYOR'S STATEMENT

This Corner Record was prepared by me or under my direction in conformance with the Land Surveyor's Act on November 19, 2009.

Signed Scott A. Bryan (L.S.) or R.C.E. Number 7228.



COUNTY SURVEYOR'S STATEMENT

This Corner Record was received 12/17 2009.

and filed 12/23 2009.

Signed Larry S. Savio Title ASSOC - L.S.

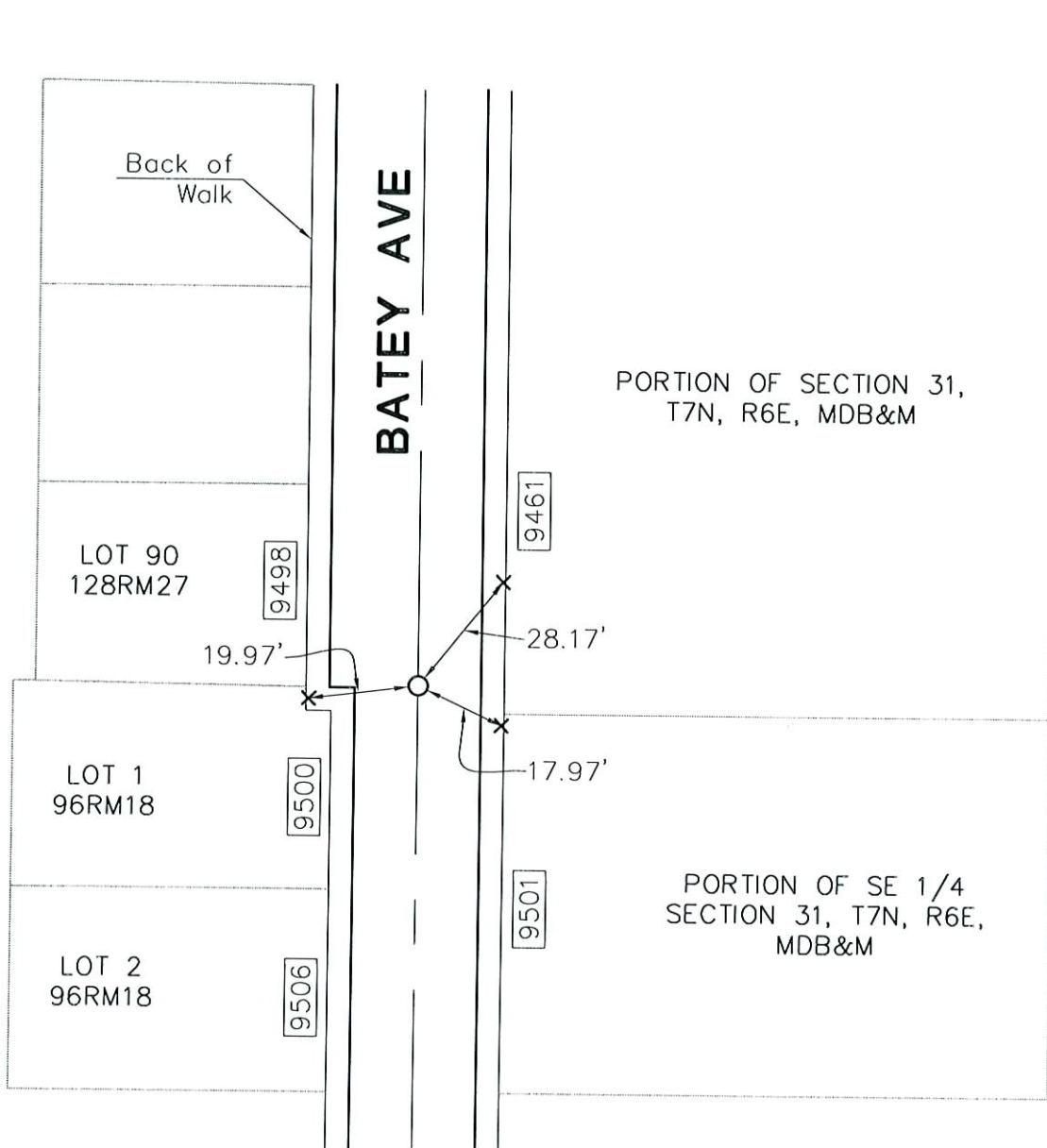


County Surveyor's Comment _____

LEGEND

Document Number _____

- × SET LEAD & TAG STAMPED LS 7228, AT BACK OF WALK
- FOUND 3/4" IRON PIPE PER 96 RM 18, S.C.R.
- STREET ADDRESS



NOT TO SCALE