

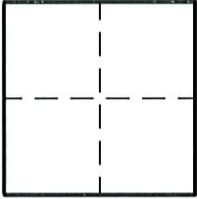
CORNER RECORD

Document Number 2189

City of ELK GROVE

County of SACRAMENTO, California

Brief Legal Description _____



CORNER TYPE

CORNER TYPE (Optional)

Government Corner Control
 Meander Property
 Rancho Other
 Date of Survey 11/18/2009

N. _____
 E. _____
 Zone _____ Datum _____
 Elev. _____

Corner - Left as found Found and tagged Established Reestablished Rebuilt

Identification and type of corner found: Evidence used to identify or procedure used to establish or reestablish the corner.
FOUND 3/4" IRON PIPE IN CENTERLINE OF VICTOR WAY PER 142 RM 8, S.C.R. TIED AS SHOWN
WITH LEAD & BRASS TAG, "PLS 7228". AFTER CONSTRUCTION, RESET FROM TIES WITH 3/4"
IRON PIPE & CAP STAMPED "PLS 7228" IN CENTERLINE OF VICTOR WAY.

A description of the physical condition of the monument as found and as set or reset. _____

SURVEYOR'S STATEMENT

This Corner Record was prepared by me or under my direction in conformance with the Land Surveyor's Act on November 19, _____ 2009.

Signed Scott A. Bryant (L.S.) or R.C.E. Number 7228



COUNTY SURVEYOR'S STATEMENT

This Corner Record was received 12/17 2009.

and filed 12/18 2009.

Signed Larry S. Savio Title Assoc. C.S.



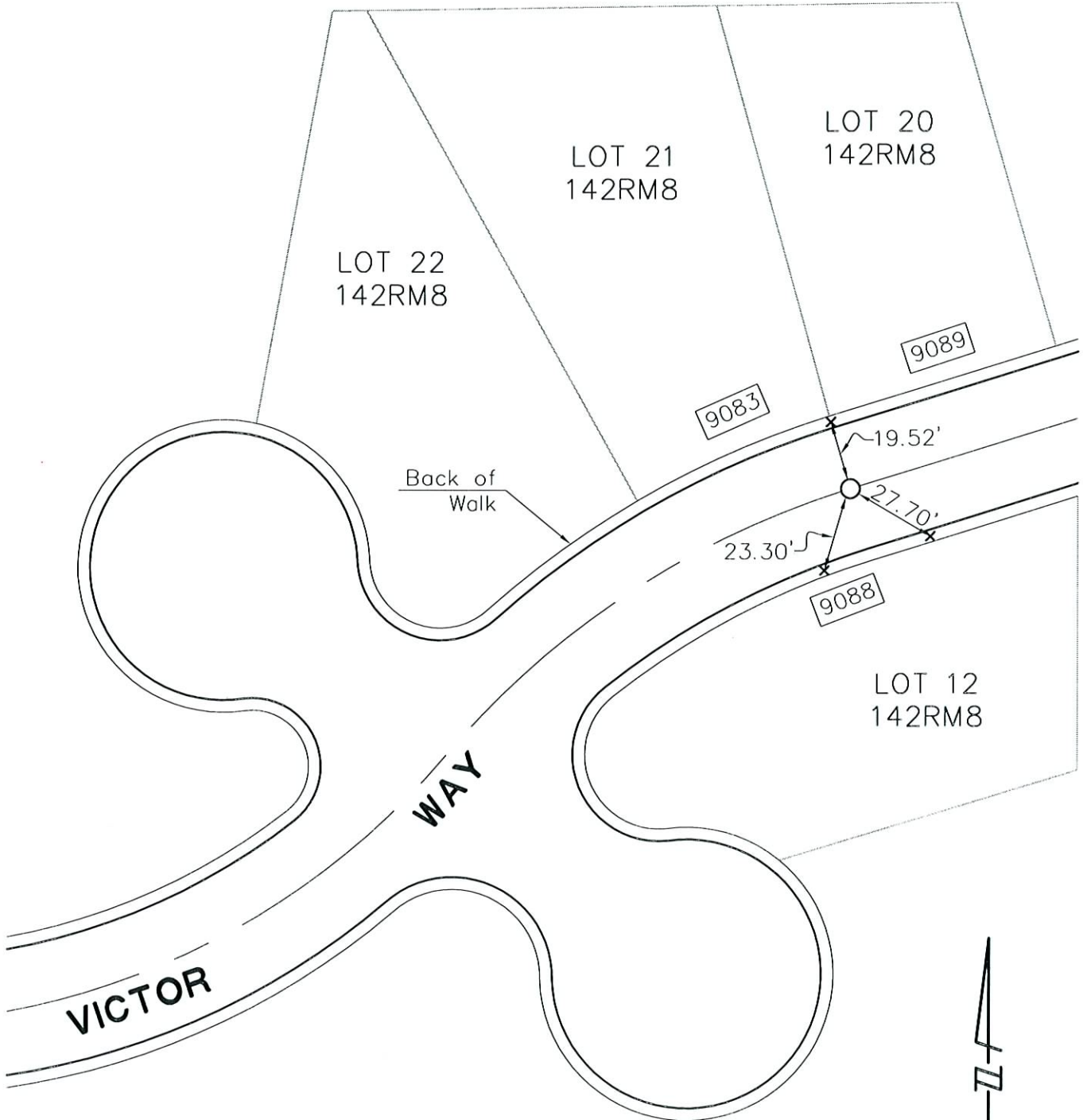
County Surveyor's Comment _____

LEGEND

Document Number _____

- x SET LEAD & TAG STAMPED PLS 7228, AT BACK OF WALK
- o SET 3/4" IRON PIPE & CAP STAMPED PLS 7228

□ STREET ADDRESS



NOT TO SCALE