

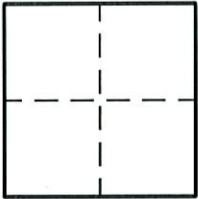
CORNER RECORD

Document Number 2159

City of ELK GROVE

County of SACRAMENTO, California

Brief Legal Description _____



CORNER TYPE

Government Corner Control
Meander Property
Rancho Other
Date of Survey _____

CORNER TYPE (Optional)

N. _____
E. _____
Zone _____ Datum _____
Elev. _____

Corner - Left as found Found and tagged Established Reestablished Rebuilt

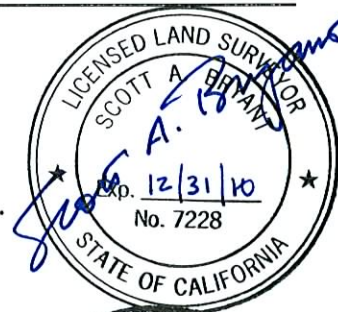
Identification and type of corner found: Evidence used to identify or procedure used to establish or reestablish the corner.
FOUND SACRAMENTO COUNTY NAIL & WASHER IN CENTERLINE OF FRANKLIN BOULEVARD,
NO RECORD.

A description of the physical condition of the monument as found and as set or reset. _____

SURVEYOR'S STATEMENT

This Corner Record was prepared by me or under my direction in conformance with the Land Surveyor's Act on August 27, _____ 2009.

Signed Scott A. Bryant L.S. or R.C.E. Number 7228.



COUNTY SURVEYOR'S STATEMENT

This Corner Record was received 10/21 _____ 2009.
and filed 10/22 _____ 2009.

Signed [Signature] Title ASSOC. L.S.



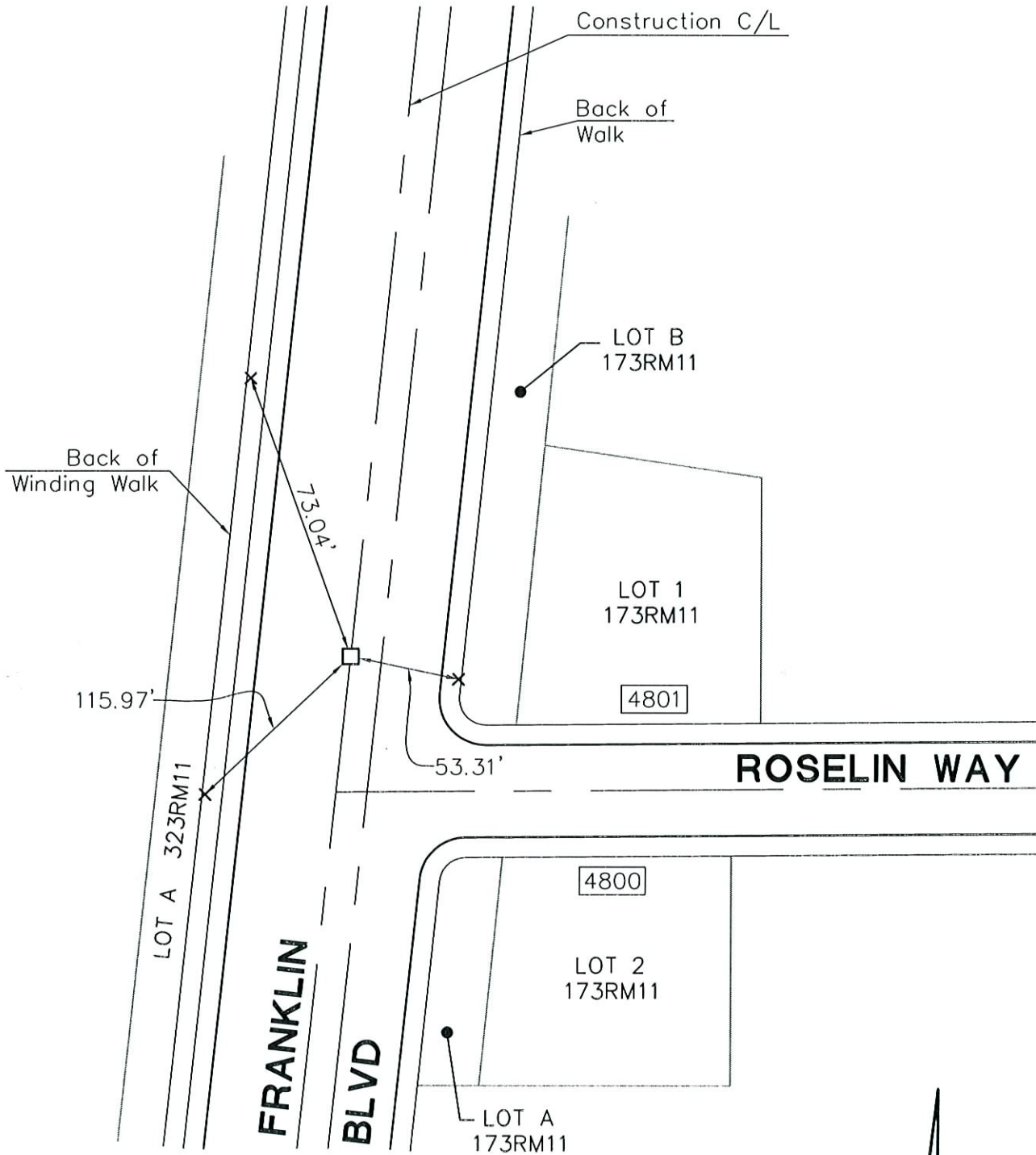
County Surveyor's Comment _____

LEGEND

Document Number _____

- × SET LEAD & TAG STAMPED LS 7228, AT BACK OF WALK
- FOUND SACRAMENTO COUNTY NAIL & WASHER, NO RECORD

□ STREET ADDRESS



NOT TO SCALE