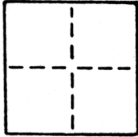


CORNER RECORD

COUNTY OF Sacramento T. 8N R. 5E M.D. California MERIDIAN CALIFORNIA

CORNER TYPE: GOV'T. CORNER MEANDER RANCHO CONTROL OTHER

CORNER IDENTIFICATION — DATE OF VISIT May 1988



Set all four corners of Lot 1641, Plat of Wright & Kimbrough Tract No. 24

CORNER — LEFT AS FOUND FOUND AND TAGGED REESTABLISHED OBLITERATED CORNER REBUILT

PHYSICAL DESCRIPTION OF CORNER FOUND; EVIDENCE AND METHOD USED TO IDENTIFY OR REESTABLISH

Corners established per official Plat of Wright & Kimbrough Tract No. 24 and found monuments.

PHYSICAL DESCRIPTION OF MONUMENTS REBUILT OR PERPETUATED

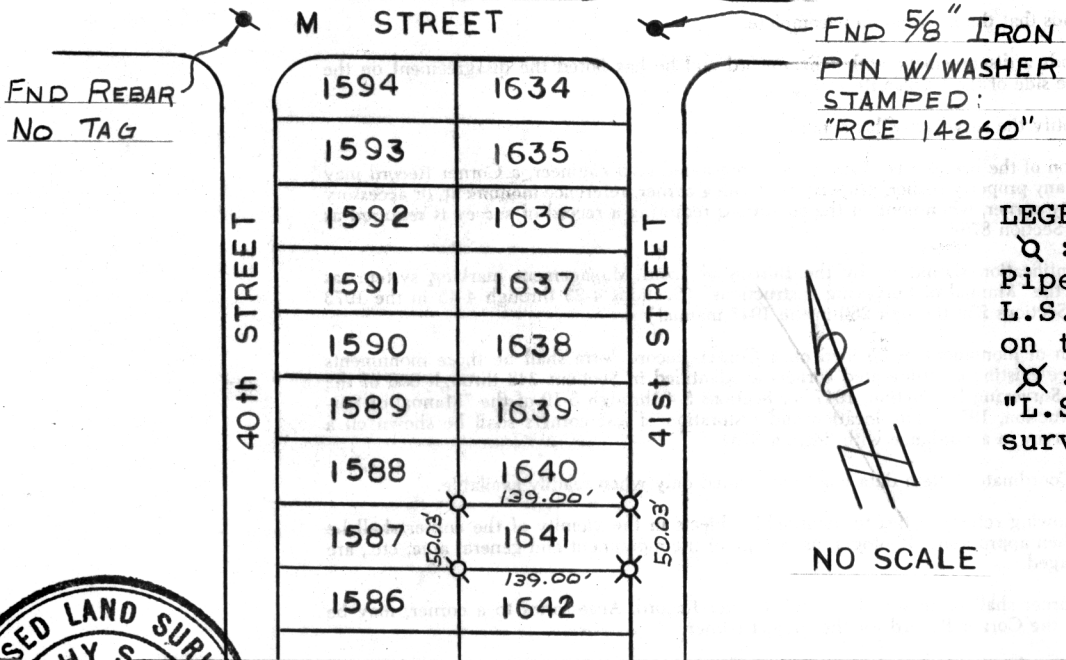
(See sketch below)

CALIFORNIA COORDINATE SYSTEM ORDER: FIRST SECOND THIRD

STATIONS USED: NGS (USC & GS) STATE COUNTY OTHER STATION _____ STATION _____

ZONE _____ ELEVATION _____ NORTHINGS (Y) _____ EASTINGS (X) _____

SKETCH: (Include reference tie or witness points, remarks and topo of area)
PLAT OF WRIGHT & KIMBROUGH TRACT NO. 24

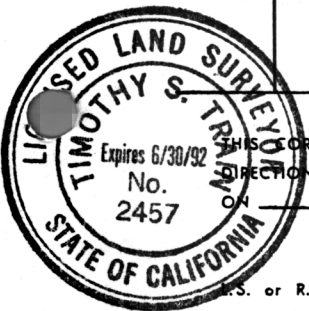


LEGEND:

⊗ : Denotes 1 1/4" O.D. Iron Pipe Monument with tag
 L.S. 2457 grouted in top. Set on this survey.
 ⊗ : Denotes lead plug and tag "L.S. 2457" drill set on this survey.

NO SCALE

FB 223 PG 27
 WO# 8805-05



SURVEYOR'S CERTIFICATE

THIS CORNER RECORD WAS PREPARED BY ME OR UNDER MY DIRECTION IN CONFORMANCE WITH THE LAND SURVEYORS ACT

SIGNED: Timothy S. Traylor
 L.S. 2457

COUNTY SURVEYOR'S CERTIFICATE

THE CORNER RECORD WAS RECEIVED AND EXAMINED AND FILED Jan 24 1989

BY: [Signature]
 TITLE: Superior Engineering Tech

DOCUMENT No. 214

STATEMENT ON BACK OF SHEET YES NO