

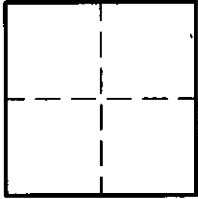
# CORNER RECORD

Document Number 2119

City of ELK GROVE

County of SACRAMENTO, California

Brief Legal Description \_\_\_\_\_



### CORNER TYPE

Government Corner  Control   
 Meander  Property   
 Rancho  Other   
 Date of Survey \_\_\_\_\_

### CORNER TYPE (Optional)

N. \_\_\_\_\_  
 E. \_\_\_\_\_  
 Zone \_\_\_\_\_ Datum \_\_\_\_\_  
 Elev. \_\_\_\_\_

**Corner -** Left as found  Found and tagged  Established  Reestablished  Rebuilt

Identification and type of corner found: Evidence used to identify or procedure used to establish or reestablish the corner.  
FOUND 3/4" IRON PIPE IN CENTERLINE OF PARK TRAIL DRIVE PER 124 RM 17, S.C.R.

A description of the physical condition of the monument as found and as set or reset. \_\_\_\_\_

### SURVEYOR'S STATEMENT

This Corner Record was prepared by me or under my direction in conformance with the Land Surveyor's Act on March 6, \_\_\_\_\_ 2009.

Signed Scott A. Bryant (L.S.) or R.C.E. Number 7228



### COUNTY SURVEYOR'S STATEMENT

This Corner Record was received 3/19 \_\_\_\_\_ 2009.

and filed 3/25 \_\_\_\_\_ 2009.

Signed Larry S. Savio Title ASSOC. L.S.



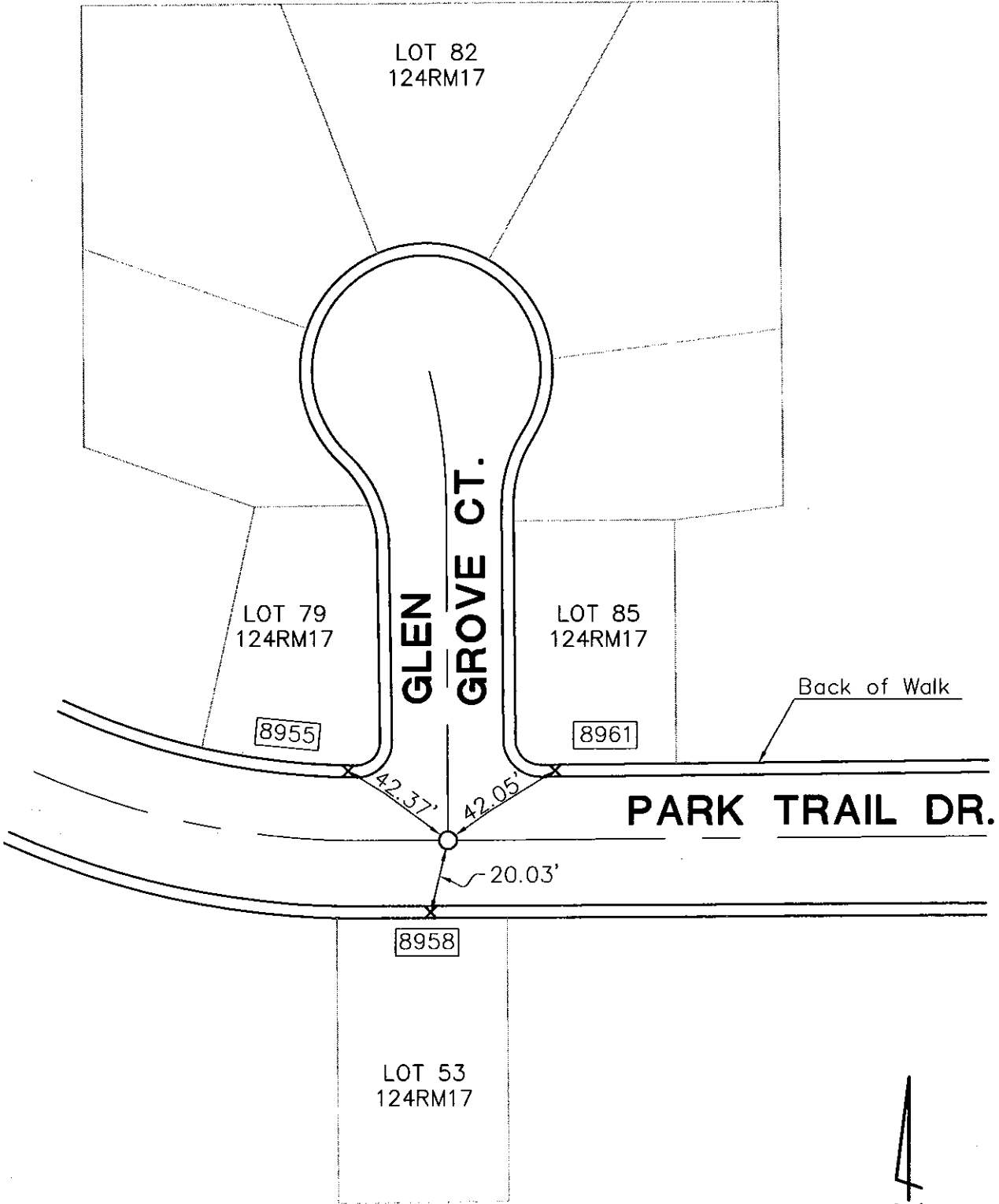
County Surveyor's Comment \_\_\_\_\_

# LEGEND

Document Number \_\_\_\_\_

- x SET LEAD & TAG STAMPED LS 7228, AT BACK OF WALK
- o FOUND 3/4" IRON PIPE PER 124 RM 17, S.C.R.

STREET ADDRESS



NOT TO SCALE