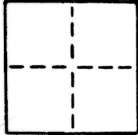


# CORNER RECORD

COUNTY OF Sacramento T. \_\_\_\_\_ R. \_\_\_\_\_ MERIDIAN \_\_\_\_\_ CALIFORNIA  
 CORNER TYPE: GOV'T. CORNER  MEANDER  RANCHO  CONTROL  OTHER   
 CORNER IDENTIFICATION — DATE OF VISIT March 1988



Set N.E. corner of Lot 5 and N.W. corner of Lot 6 in the block bounded by U and V, 21st and 22nd Streets, City of Sacramento.

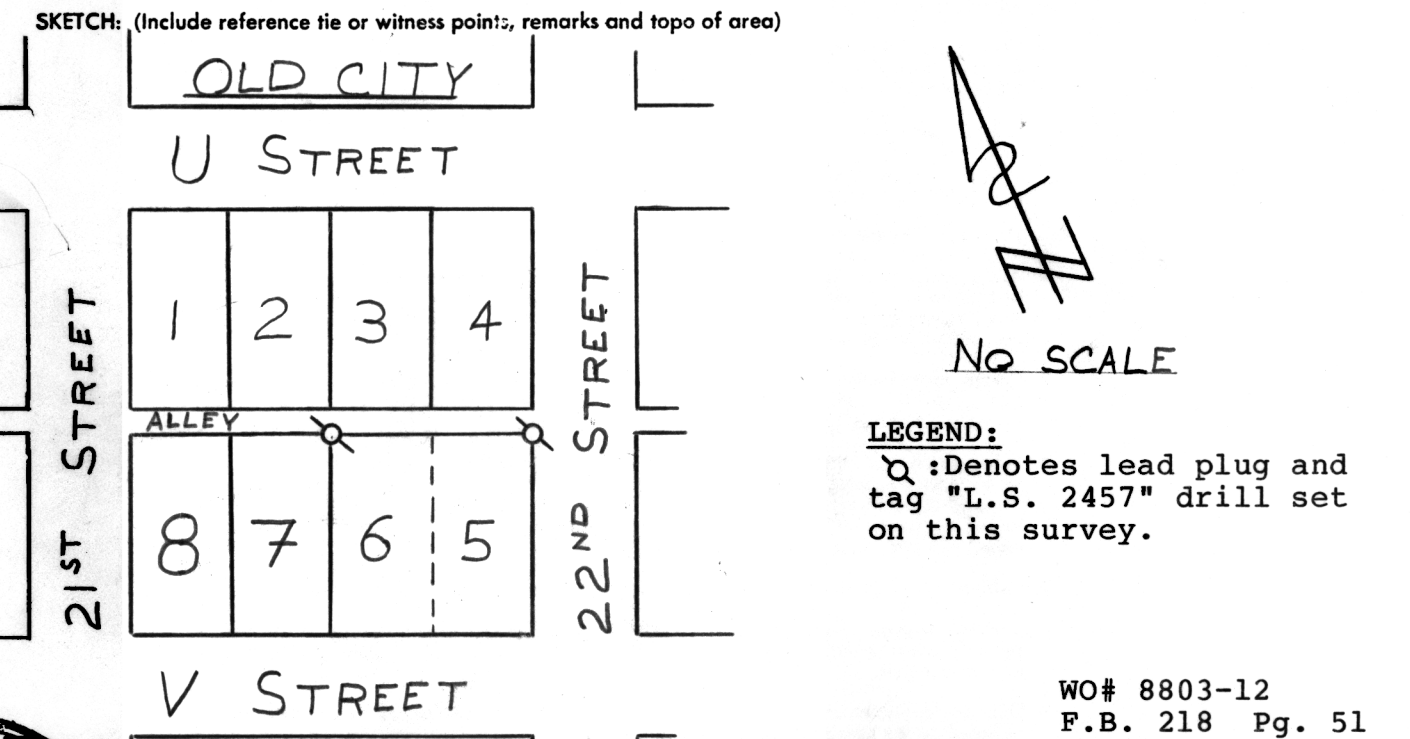
CORNER — LEFT AS FOUND  FOUND AND TAGGED  REESTABLISHED OBLITERATED CORNER  REBUILT   
 PHYSICAL DESCRIPTION OF CORNER FOUND; EVIDENCE AND METHOD USED TO IDENTIFY OR REESTABLISH

Corners established by surveying around the block using found intersection nails as verified by found city ties.

PHYSICAL DESCRIPTION OF MONUMENTS REBUILT OR PERPETUATED

(See sketch below)

CALIFORNIA COORDINATE SYSTEM ORDER: FIRST  SECOND  THIRD   
 STATIONS USED: NGS (USC & GS)  STATE  COUNTY  OTHER  STATION \_\_\_\_\_ STATION \_\_\_\_\_  
 ZONE \_\_\_\_\_ ELEVATION \_\_\_\_\_ NORTHINGS (Y) \_\_\_\_\_ EASTINGS (X) \_\_\_\_\_



**LEGEND:**  
 Q : Denotes lead plug and tag "L.S. 2457" drill set on this survey.

WO# 8803-12  
 F.B. 218 Pg. 51



**SURVEYOR'S CERTIFICATE**  
 CORNER RECORD WAS PREPARED BY ME OR UNDER MY  
 ON IN CONFORMANCE WITH THE LAND SURVEYORS ACT  
April 8 1988  
 SIGNED: Timothy S. Trautman  
 R.C.E. No.: L.S. 2457

**COUNTY SURVEYOR'S CERTIFICATE**  
 THE CORNER RECORD WAS RECEIVED Jan 24 1989  
 AND EXAMINED AND FILED Jan 24 1989  
 BY: John Fisher  
 TITLE: Supervising Engineering Tech  
 DOCUMENT No. 0211

STATEMENT ON BACK OF SHEET YES  NO