

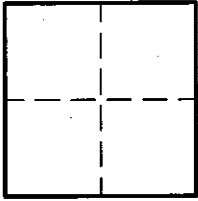
CORNER RECORD

Document Number 2109

City of ELK GROVE

County of SACRAMENTO, California

Brief Legal Description _____



CORNER TYPE

Government Corner Control
 Meander Property
 Rancho Other
 Date of Survey _____

CORNER TYPE (Optional)

N. _____
 E. _____
 Zone _____ Datum _____
 Elev. _____

Corner - Left as found Found and tagged Established Reestablished Rebuilt

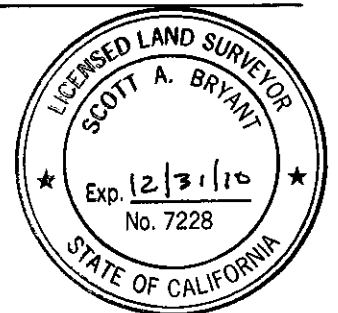
Identification and type of corner found: Evidence used to identify or procedure used to establish or reestablish the corner.
FOUND 3/4" IRON PIPE IN CENTERLINE OF LUJAN CREST COURT PER 162 RM 5, S.C.R.

A description of the physical condition of the monument as found and as set or reset. _____

SURVEYOR'S STATEMENT

This Corner Record was prepared by me or under my direction in conformance with the Land Surveyor's Act on March 6, _____ 2009.

Signed Scott A. Bryant (L.S.) or R.C.E. Number 7228.



COUNTY SURVEYOR'S STATEMENT

This Corner Record was received 3/19 _____ 2009.

and filed 3/25 _____ 2009.

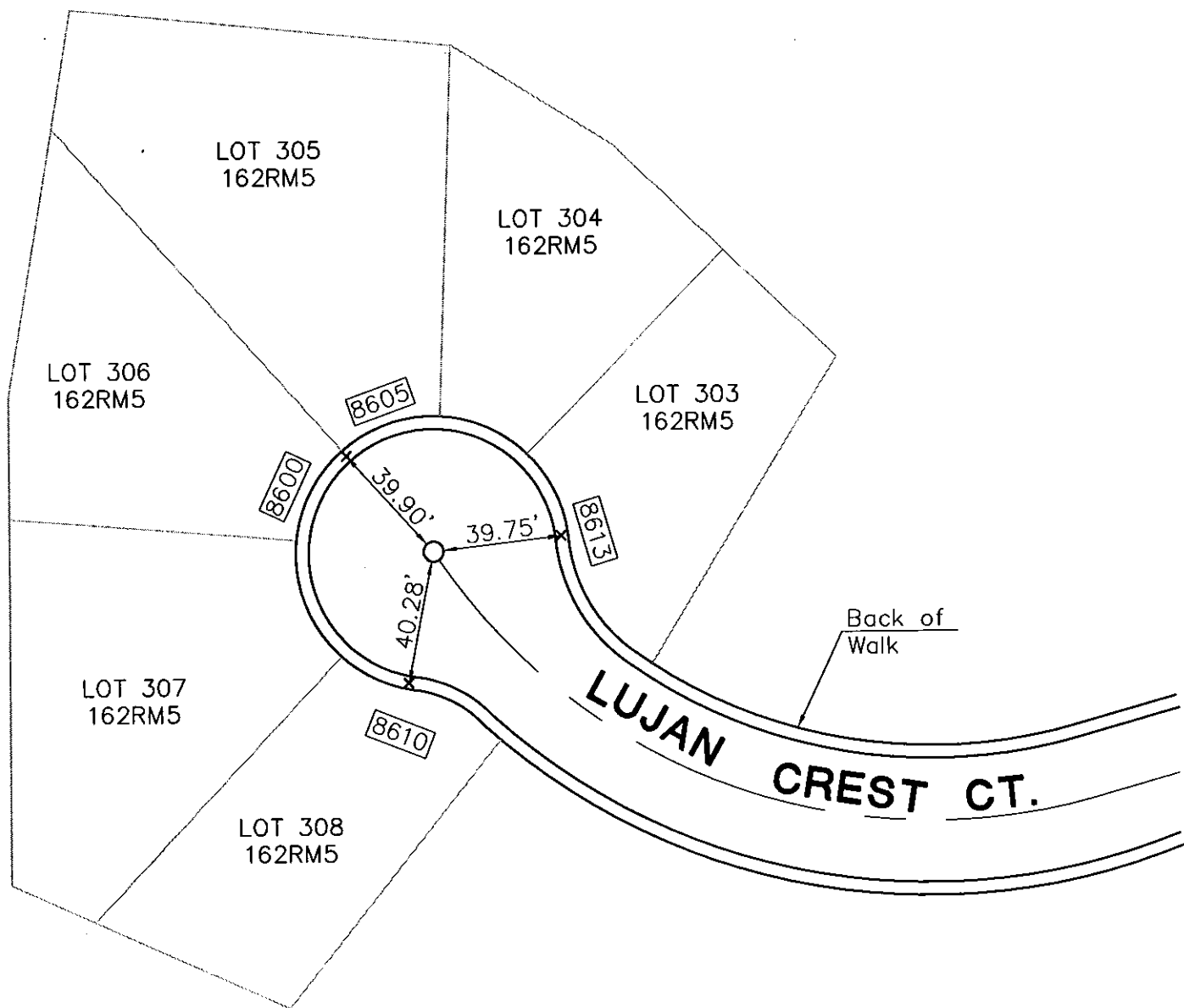
Signed [Signature] Title ASSOC. L.S.



County Surveyor's Comment _____

LEGEND

- x SET LEAD & TAG STAMPED LS 7228, AT BACK OF WALK
- o FOUND 3/4" IRON PIPE PER 162 RM 5, S.C.R.



NOT TO SCALE