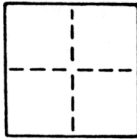


CORNER RECORD

COUNTY OF Sacramento T. 8 N. R. 5 E. M.D. _____ MERIDIAN CALIFORNIA

CORNER TYPE: GOV'T. CORNER MEANDER RANCHO CONTROL OTHER

CORNER IDENTIFICATION — DATE OF VISIT June 9 1988



Set all corners of Lot 2046, Plat of Wright & Kimbrough Tract No. 24

CORNER — LEFT AS FOUND FOUND AND TAGGED REESTABLISHED OBLITERATED CORNER REBUILT

PHYSICAL DESCRIPTION OF CORNER FOUND; EVIDENCE AND METHOD USED TO IDENTIFY OR REESTABLISH

Corners established per Official Plat of Wright & Kimbrough Tract No. 24, found old chiseled gashes set on property line projections at front of curb and street improvements.

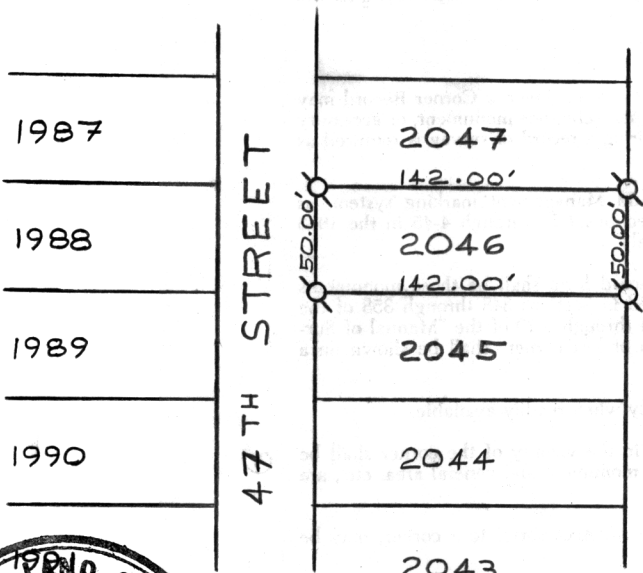
PHYSICAL DESCRIPTION OF MONUMENTS REBUILT OR PERPETUATED

(See sketch below)

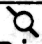
CALIFORNIA COORDINATE SYSTEM ORDER: FIRST SECOND THIRD
 STATIONS USED: NGS (USC & GS) STATE COUNTY OTHER STATION _____ STATION _____
 ZONE _____ ELEVATION _____ NORTHINGS (Y) _____ EASTINGS (X) _____

SKETCH: (Include reference tie or witness points, remarks and topo of area)

PLAT OF WRIGHT + KIMBROUGH
TRACT NO. 24



NO SCALE

LEGEND:
 : Denotes 1 1/4" O.D. Iron Pipe Monument with tag L.S. 2457 grouted in top. Set on this survey.

WO# 8806-02
F.B.218, Pg.75



SURVEYOR'S CERTIFICATE
 THIS CORNER RECORD WAS PREPARED BY ME OR UNDER MY DIRECTION IN CONFORMANCE WITH THE LAND SURVEYORS ACT
 June 20, 19 88
 SIGNED: Timothy S. Train
 No.: L.S. 2457

COUNTY SURVEYOR'S CERTIFICATE
 THE CORNER RECORD WAS RECEIVED July 11-28, 1988
 AND EXAMINED AND FILED 11-28-1988
 BY: Paul Parker
 TITLE: Supervising Engineering
 DOCUMENT No. 2090

STATEMENT ON BACK OF SHEET YES NO