

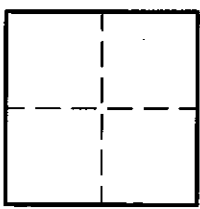
# CORNER RECORD

Document Number 2079

City of ELK GROVE

County of SACRAMENTO, California

Brief Legal Description \_\_\_\_\_



### CORNER TYPE

Government Corner  Control   
 Meander  Property   
 Rancho  Other   
 Date of Survey \_\_\_\_\_

### CORNER TYPE (Optional)

N. \_\_\_\_\_  
 E. \_\_\_\_\_  
 Zone \_\_\_\_\_ Datum \_\_\_\_\_  
 Elev. \_\_\_\_\_

Corner - Left as found  Found and tagged  Established  Reestablished  Rebuilt

Identification and type of corner found: Evidence used to identify or procedure used to establish or reestablish the corner.  
FOUND 3/4" IRON PIPE IN CENTERLINE OF ESTANCIA COURT PER 120 RM 10, S.C.R.

A description of the physical condition of the monument as found and as set or reset. \_\_\_\_\_

### SURVEYOR'S STATEMENT

This Corner Record was prepared by me or under my direction in conformance with the Land Surveyor's Act on March 6, 2009.

Signed Scott A. Bryant (LS) or R.C.E. Number 7228



### COUNTY SURVEYOR'S STATEMENT

This Corner Record was received 3/19 2009.

and filed 3/24 2009.

Signed [Signature] Title ASSOC. L.S.



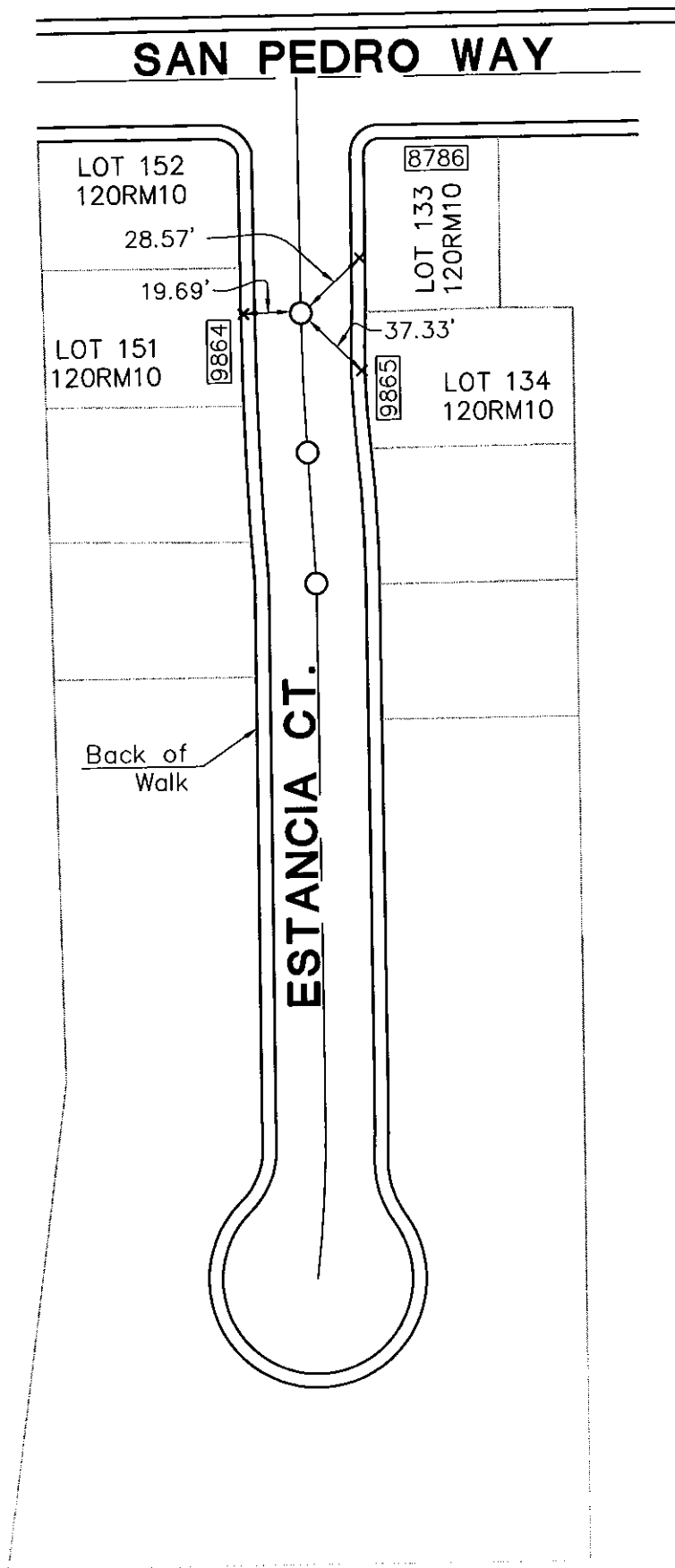
County Surveyor's Comment \_\_\_\_\_

# LEGEND

x SET LEAD & TAG STAMPED LS 7228, AT BACK OF WALK

o FOUND 3/4" IRON PIPE PER 120 RM 10, S.C.R.

□ STREET ADDRESS



NOT TO SCALE