

# Corner Record

Document Number 1969

City of \_\_\_\_\_

County of Sacramento, California

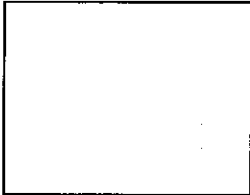
### Brief Legal Description

The centerlines of Riva Ridge Drive, Triple Crown Court and Roundtable Court as shown on the "Plat of CURRAGH DOWNS", filed in the Office of the Recorder of the County of Sacramento in Book 93 of Maps, at Page 8.

### Corner Type

### Coordinates

(Optional)



Government Corner <input type="checkbox"/>	Control <input type="checkbox"/>	N. _____
Meander <input type="checkbox"/>	Property <input checked="" type="checkbox"/>	E. _____
Rancho <input type="checkbox"/>	Other <input type="checkbox"/>	Zone _____ Datum _____
Date of Survey <u>7/3/2007</u>	Elev. _____	

Corner- Left as Found  Found and Tagged  Established  Reestablished  Rebuilt

### Identification and Type of Corner Found, Evidence used to Identify or Procedure used to Establish or Reestablish the corner:

Found 3/4" iron pipe monuments on the centerlines of Riva Ridge Drive, Triple Crown Court and Roundtable Court as shown on the "Plat of CURRAGH DOWNS", filed in the Office of the Recorder of the County of Sacramento in Book 93 of Maps, at Page 8. Set 3/4" Sacramento County brass tags in concrete for reference points. Refer to Sacramento County field notes A 266, page 55, 7/3/2007.

### A Description of the Physical Condition of the Monument as Found and as Set or Reset:

Replaced found monuments on 3/19/2008 with 2 1/2" brass discs stamped "Sacramento Co. Municipal Services" in monument wells after found monuments were destroyed as a result of construction.

### Surveyor's Statement

This Corner Record was prepared by me or under my direction in conformance with the Land Surveyor's Act on 1/22/2009

Signed Thomas F. X. Sekel LS 4897  
Thomas F. X. Sekel



### County Surveyor's Statement

This Corner Record was received 3/6, 2009 and examined and filed 3/12, 2009

Signed Larry Savio Title: Associate Land Surveyor

County Surveyor's Comments:



△ SET 2 1/2" BRASS DISC STAMPED "SACRAMENTO CO. MUNICIPAL SERVICES" ASK, SEM 3/19/2008

FND 3/4" IP (INTX)

FND 3/4" IP (BC)

FND 3/4" I.P. (EC)

FND 3/4" I.P. (RADIUS A)

FND 3/4" I.P. (BC)

LEGEND:

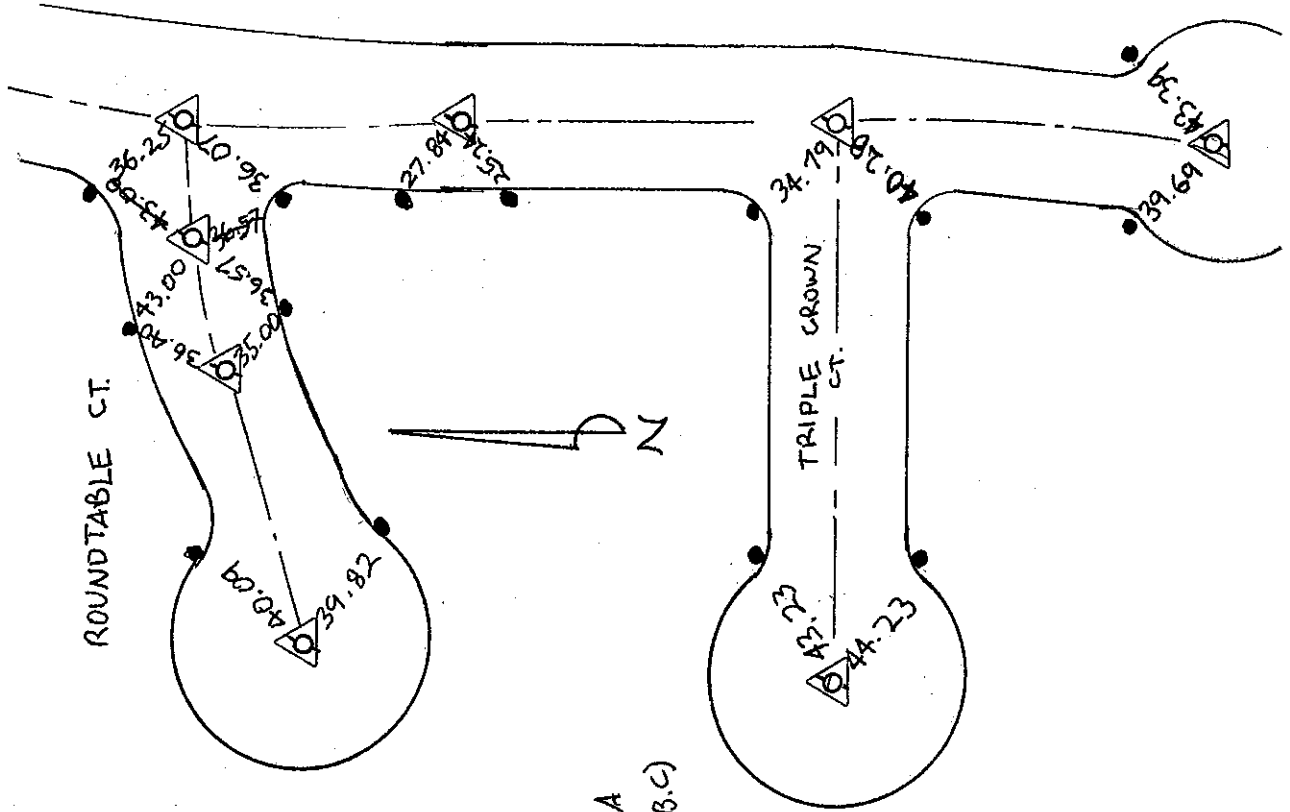
○ FND 3/4" I.P. PER B.M. 93/8-A

● SET SAC. CO. R.P. TAG (T.B.C)

FND 3/4" I.P. (RADIUS PT)

FND 3/4" I.P. (INTX)

FND 3/4" IP (RADIUS PT.)



RIVA RIDGE DRIVE

992