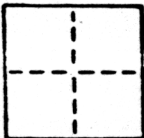


# CORNER RECORD

COUNTY OF SACRAMENTO T. \_\_\_\_\_ R. \_\_\_\_\_ MERIDIAN \_\_\_\_\_ CALIFORNIA

CORNER TYPE: GOVT. CORNER  MEANDER  RANCHO  CONTROL  OTHER

CORNER IDENTIFICATION - DATE OF VISIT SEPTEMBER 14 1988



*LOT 252 OF ROSEMONT UNIT #2, 43 B.M. 25*

CORNER - LEFT AS FOUND  FOUND AND TAGGED  REESTABLISHED OBLITERATED CORNER  RESULT

PHYSICAL DESCRIPTION OF CORNER FOUND; EVIDENCE AND METHOD USED TO IDENTIFY OR REESTABLISH

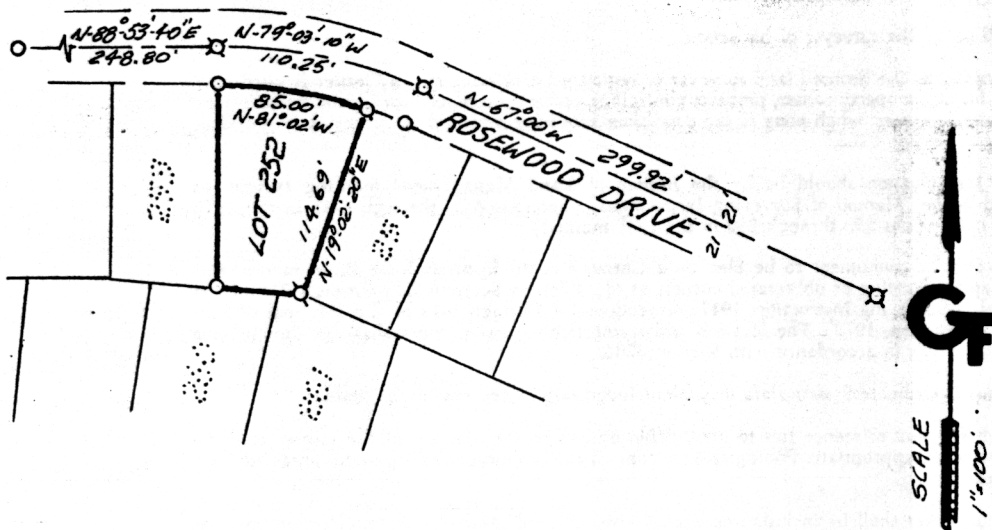
*SEE SKETCH*

PHYSICAL DESCRIPTION OF MONUMENTS REBUILT OR PERPETUATED

*SEE SKETCH*

CALIFORNIA COORDINATE SYSTEM ORDER: FIRST  SECOND  THIRD   
 STATIONS USED: NGS (USC & GS)  STATE  COUNTY  OTHER  STATION \_\_\_\_\_ STATION \_\_\_\_\_  
 ZONE \_\_\_\_\_ ELEVATION \_\_\_\_\_ NORTHINGS (N) \_\_\_\_\_ EASTINGS (E) \_\_\_\_\_

SKETCH: (Include reference tie or witness points, remarks and topo of area)



## LEGEND

- SET 3/4" REBAR L5 5123
- ⊗ FND. 3/4" IRON PIPE
- DIMENSION POINT

**SURVEYOR'S CERTIFICATE**

THIS CORNER RECORD WAS PREPARED BY ME OR UNDER MY DIRECTION IN CONFORMANCE WITH THE LAND SURVEYORS ACT ON SEPTEMBER 14 1988

SIGNED: Stan A. Gaudes  
 I.S. or R.C.E. No. L.S. 5123

SEAL

**COUNTY SURVEYOR'S CERTIFICATE**

THE CORNER RECORD WAS RECEIVED SEPT 23 1988 AND EXAMINED AND FILED SEPT 26 1988

BY: [Signature]  
 TITLE: Supervising Engineering Tech  
 DOCUMENT No. 194

STATEMENT ON BACK OF SHEET

YES  NO