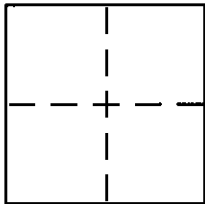


**CORNER RECORD**

Document Number 1919

City of \_\_\_\_\_ County of Sacramento, California

Brief Legal Description Parcel 3 33 PM 18



**CORNER TYPE**

Government Corner  Control   
Meander  Property   
Rancho  Other   
Date of Survey Jan 16, 2009

**COORDINATES (Optional)**

N. \_\_\_\_\_  
E. \_\_\_\_\_  
Zone \_\_\_\_\_ NAD27  NAD83   
NAD83 Epoch \_\_\_\_\_  
Elev. \_\_\_\_\_  
Vert. Datum: NGVD29  NAVD88   
Meas. Units: Metric  Imperial

Corner - Left as found  Found and tagged  Established  Reestablished  Rebuilt

Identification and type of corner found: Evidence used to identify or procedure used to establish or reestablish the corner:

Monuments on line as per parcel map are 3/4" Rebar as called except intermediate point on west line where I found a steel cap with original LS number stamped on it.

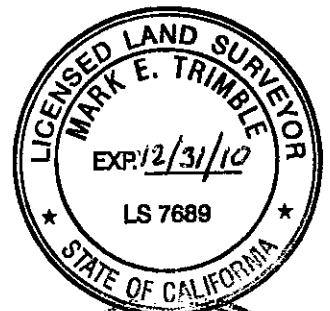
A description of the physical condition of the monument as found and as set or reset:

All points found appear to be as originally set.

**SURVEYOR'S STATEMENT**

This Corner Record was prepared by me or under my direction in conformance with the Land Surveyor's Act on Jan 16, 2009

Signed Mark Trimble P.L.S or R.C.E. No. LS 2689



**COUNTY SURVEYOR'S STATEMENT**

This Corner Record was received 1/20/09

and examined and filed 1/20/09

Signed L.S. Savio P.L.S or R.C.E. No. L.S. 7965

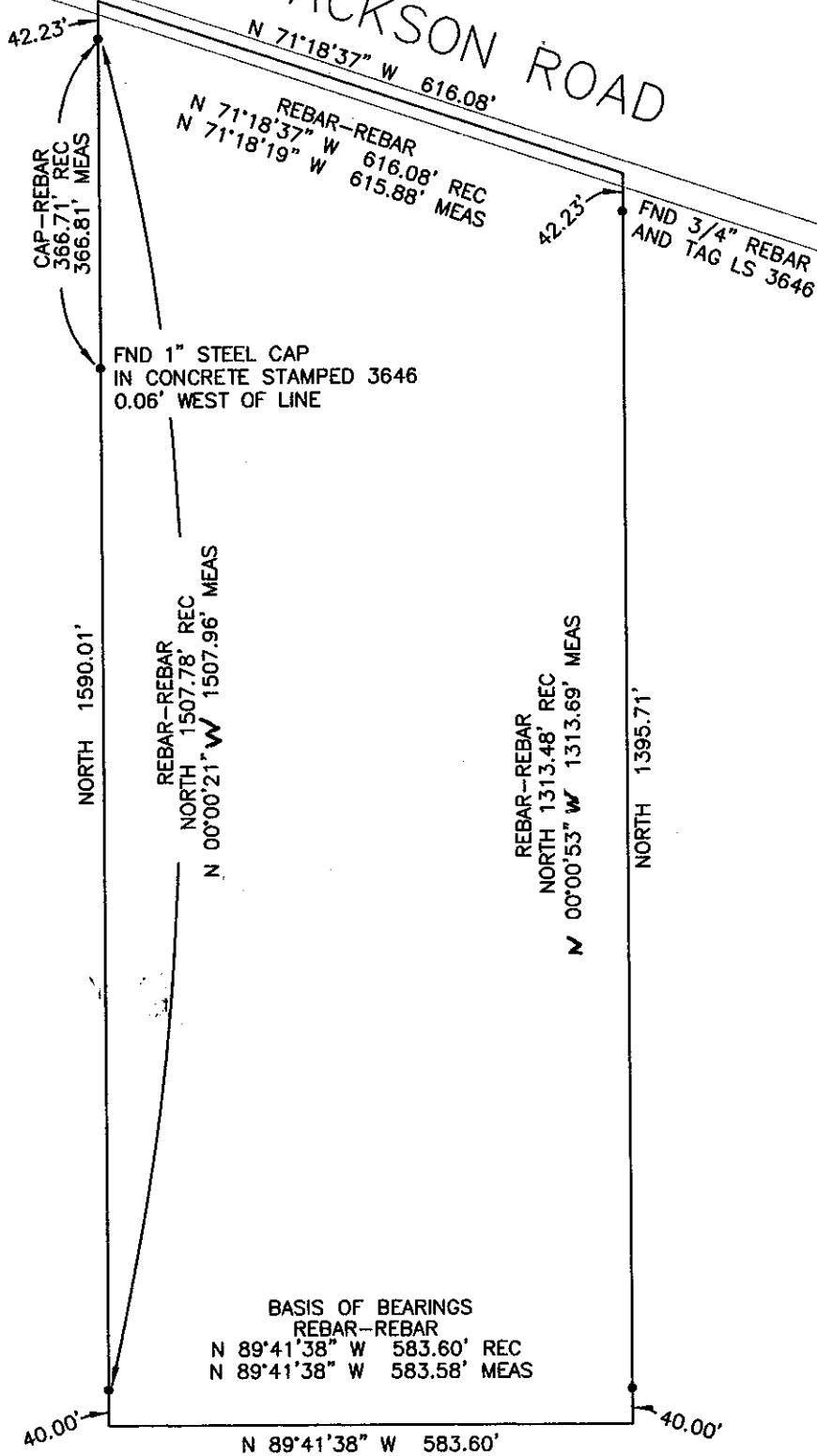
Title ASSOCIATE LAND SURVEYOR



County Surveyor's Comment \_\_\_\_\_

PARCEL 3  
 33 PM 18  
 APN 067-0050-037

# JACKSON ROAD



NOTE:  
 • = FOUND 3/4" REBAR  
 EXCEPT AS NOTED



SCALE 1" = 200'

BASIS OF BEARINGS  
 REBAR-REBAR  
 N 89°41'38" W 583.60' REC  
 N 89°41'38" W 583.58' MEAS