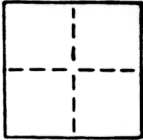


CORNER RECORD

COUNTY OF Sacramento T. _____ R. _____ MERIDIAN _____ CALIFORNIA
CORNER TYPE: GOVT. CORNER MEANDER RANCHO CONTROL OTHER
CORNER IDENTIFICATION — DATE OF VISIT _____ 19____



CORNER — LEFT AS FOUND FOUND AND TAGGED REESTABLISHED OBLITERATED CORNER REBUILT

PHYSICAL DESCRIPTION OF CORNER FOUND; EVIDENCE AND METHOD USED TO IDENTIFY OR REESTABLISH

PHYSICAL DESCRIPTION OF MONUMENTS REBUILT OR PERPETUATED


5/8" rebar set with plastic cap stamped L.S. 5030

CALIFORNIA COORDINATE SYSTEM ORDER: FIRST SECOND THIRD
STATIONS USED: NGS (USC & GS) STATE COUNTY OTHER STATION _____ STATION _____
ZONE _____ ELEVATION _____ NORTHINGS (Y) _____ EASTINGS (X) _____

SKETCH: (Include reference tie or witness points, remarks and topo of area)

See attached Map Lot 44 of SUTTER TERRACE ADDITION
10 BM 50

SURVEYOR'S CERTIFICATE
THIS CORNER RECORD WAS PREPARED BY ME OR UNDER MY DIRECTION IN CONFORMANCE WITH THE LAND SURVEYORS ACT ON Aug 12
SIGNED: Richard A. Varney
L.S. or R.C.E. No.: LS 5030



COUNTY SURVEYOR'S CERTIFICATE
THE CORNER RECORD WAS RECEIVED August 16 1988
AND EXAMINED AND FILED Sept 15 1988
BY: D. PARKER
TITLE: SUPERVISING ENGINEERING TECH
DOCUMENT No. 191
STATEMENT ON BACK OF SHEET YES NO

LOT 44, SUTTER TERRACE ADDITION IO BM 50

AUGUST 1988

SCALE 1" = 40'

VARNEY LAND SURVEYS

SURVEYOR'S STATEMENT

THIS IS A TRUE REPRESENTATION OF A FIELD SURVEY DONE BY ME IN JULY OF 1988, AT THE REQUEST OF LLOYD BARNES.

Richard A. Varney
RICHARD A. VARNEY
L.S. 5030



BASIS OF BEARINGS

THE BEARINGS OF THIS SURVEY ARE BASED ON THE THE CENTERLINE OF 21ST STREET, THE MONUMENTS WERE SET FROM CITY TIES, THE BEARING BEING N19°16'00"E PER IO BM 50.

LEGEND

- Monument set from city ties
- Dimension point
- ⊕ Set 5/8" Rebar with plastic cap stamped L.S. 5030

CITY TIES

BURNETT and 20th ST.
26.10 SW RC ⊕ +
25.96 SE RC ⊕ +
20th ST. and 1st AVE.
25.63 SW RC ⊕ +

TIES BY VARNEY

20th ST. and 1st AVE.
25.50 NE RC ⊕ +
23.64 SE RC ⊕ +
1st AVE. and ALLEY
20.46 NW RC ⊕ +
20.24 NE RC ⊕ +

21st ST. and 1st AVE.

36.06 NW RC ⊕ +
35.57 SW RC ⊕ +

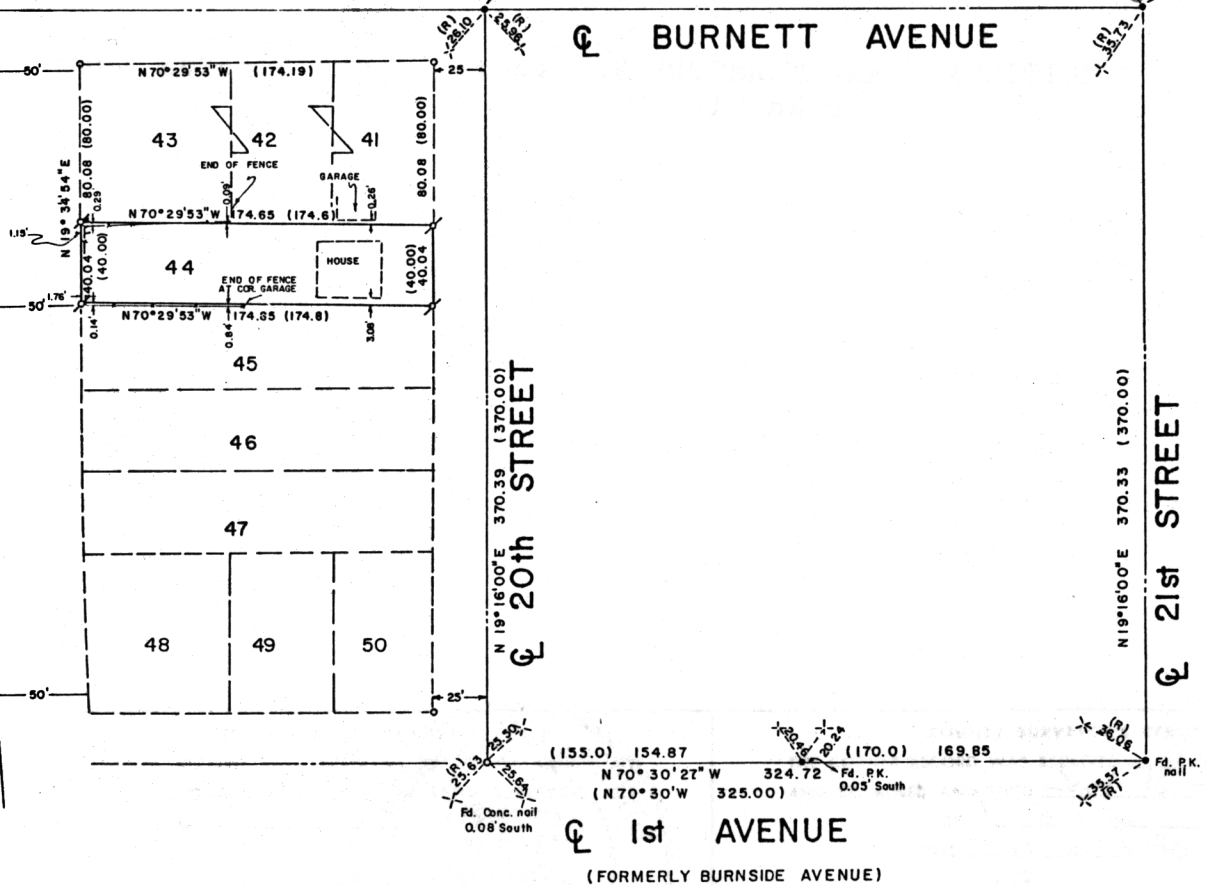
BURNETT and 21st ST.

36.02 NW RC ⊕ +
35.73 SW RC ⊕ +

N19°34'54"E (N19°34'E)
UNION PACIFIC RAIL ROAD TRACKS

(N 70°30' W 249.07)
N 70°29'53" W 249.09

(N 70°30' W 325.00)
N 70°29'53" W 324.72



(155.0) 154.87 (170.0) 169.85
N 70°30'21" W 324.72 Fd. P.K.
N 70°30' W 325.00 0.05' South

1st AVENUE
(FORMERLY BURNSIDE AVENUE)