

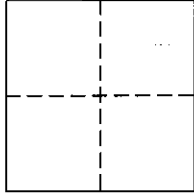
CORNER RECORD

Document Number 1909

City of SACRAMENTO

County of SACRAMENTO, California

Brief Legal Description HAGGIN OAKS PARCEL MAP (207 P.M. 9) SECTION 26 & 31 OF RANCHO DEL PASO



CORNER TYPE

Government Type Control
Meander Property
Rancho Other
Date of Survey 11/11/08

COORDINATES (Optional)

N. _____
E. _____
Zone _____ NAD27 NAD83
NAD83 Epoch _____
Vert. Datum: NGVD29 NAVD88
Meas. Units: Metric Imperial

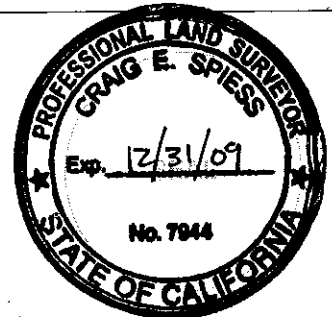
Corner - Left as found Found and tagged Established Reestablished Rebuilt

Identification and type of corner found: Evidence used to identify or procedure used to establish or reestablish the corner:
FOUND 6" X 6" CONCRETE HIGHWAY MONUMENT AT STATION 296+60.51-55 FEET LEFT OF "E4" BASE LINE AS SHOWN ON STATE HIGHWAY MAPBOOK NO. 3, AT PAGE 268, SACRAMENTO COUNTY RECORDS MARKING AN ANGLE POINT IN THE NORTHERLY RIGHT-OF-WAY LINE OF BUSINESS 80. DID NOT SET 1-1/4" IRON PIPE WITH CAP STAMPED L.S. 7944 AS SHOWN ON SAID PARCEL MAP.

A Description of the physical condition of the monument as found and as set or reset:
6" X 6" CONCRETE HIGHWAY MONUMENT IS IN GOOD CONDITION.

SURVEYOR'S STATEMENT

This Corner Record was prepared by me or under my direction in conformance with the Land Surveyor's Act on NOVEMBER 14, 2008
Signed [Signature] P.L.S. or R.C.E. No. 7944



COUNTY SURVEYOR'S STATEMENT

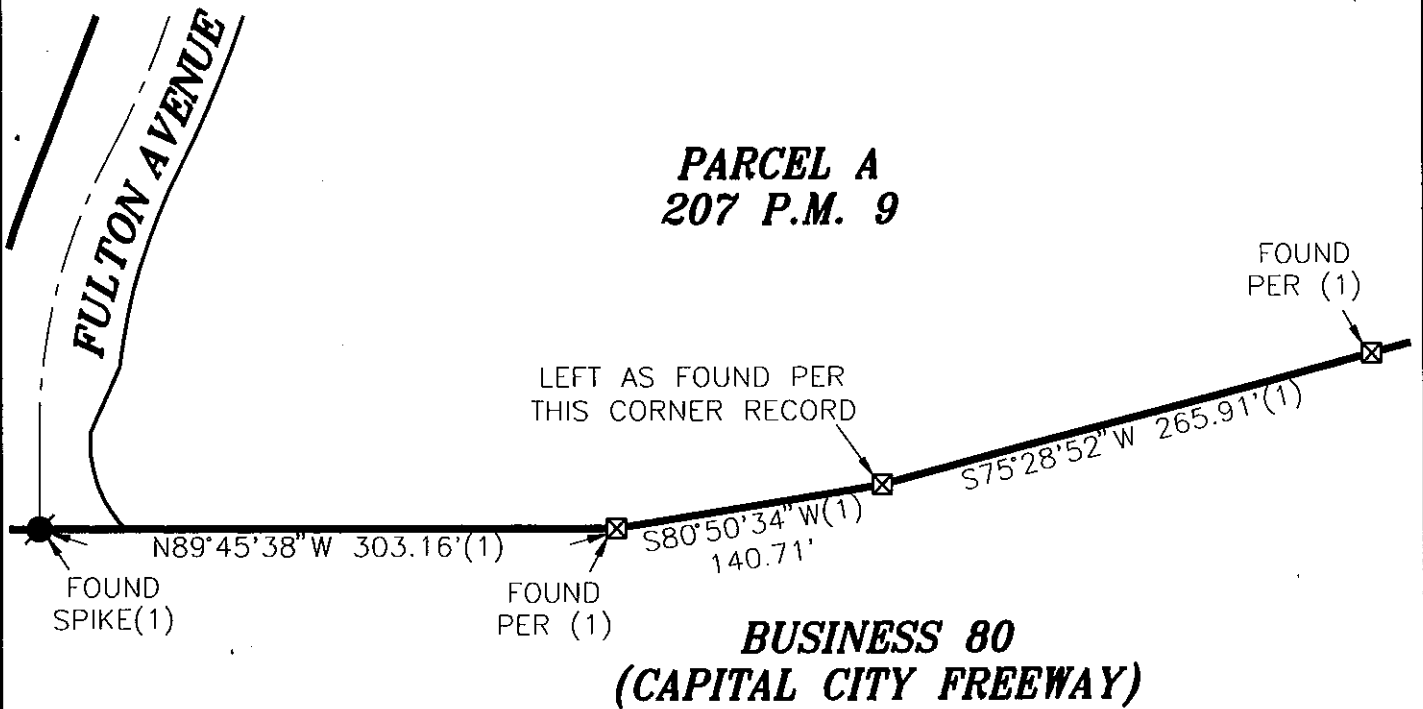
This Corner Record was received 11/18/2008
and examined and filed 11/19/2008
Signed [Signature] P.L.S. or R.C.E. No. 7965
Title ASSOCIATE LAND SURVEYOR



County Surveyor's Comment _____

CORNER RECORD
HAGGIN OAKS
207 P.M. 9

CITY OF SACRAMENTO COUNTY OF SACRAMENTO
STATE OF CALIFORNIA



LEGEND:

- ☒ FOUND 6" X 6" CONCRETE HIGHWAY MONUMENT
- FOUND SPIKE
- (1) 207 P.M. 9



SCALE: 1"=100'