

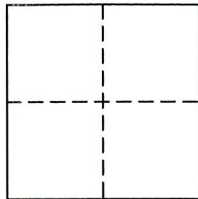
CORNER RECORD

Document Number 1873-1

City of RANCHO CORDOVA

County of SACRAMENTO, California

Brief Legal Description NORTH DOUGLAS VILLAGE 6 (351 B.M. 6) - RANCHO RIO DE LOS AMERICANOS.



CORNER TYPE

Government Type Control
Meander Property
Rancho Other
Date of Survey 5/5/08

COORDINATES (Optional)

N. _____
E. _____
Zone _____ NAD27 NAD83
NAD83 Epoch _____
Vert. Datum: NGVD29 NAVD88
Meas. Units: Metric Imperial

Corner - Left as found Found and tagged Established Reestablished Rebuilt

Identification and type of corner found: Evidence used to identify or procedure used to establish or reestablish the corner:
A THREE-QUARTER INCH (3/4") IRON PIPE WITH PLUG STAMPED L.S. 7944 MARKING AN ANGLE POINT IN THE CENTER-LINE OF FARLEN CIRCLE AT THE SOUTHERLY ELBOW AS SHOWN ON THAT CERTAIN FINAL MAP ENTITLED "NORTH DOUGLAS VILLAGE 6" FILED FOR RECORD IN BOOK 351 OF MAPS, AT PAGE 6, SACRAMENTO COUNTY RECORDS WAS NOT SET DUE TO A MANHOLE COVER.

A Description of the physical condition of the monument as found and as set or reset:
NO MONUMENT FOUND. SCRIBED THE MANHOLE COVER WHICH CAN BE LOCATED WITH SWING TIES FROM THE ONE INCH (1") BRASS DISK STAMPED L.S. 7944 AT ONE FOOT (1.00') PROJECTION MARKING THE FRONT CORNERS OF LOTS 36 / 37 (SWING TIE DISTANCE OF 20.74 FEET) AND 37 / 38 (SWING TIE DISTANCE OF 28.08 FEET).

SURVEYOR'S STATEMENT

This Corner Record was prepared by me or under my direction in conformance with the Land Surveyor's Act on MAY 5, 2008
Signed [Signature] P.L.S. or R.C.E. No. 7944



COUNTY SURVEYOR'S STATEMENT

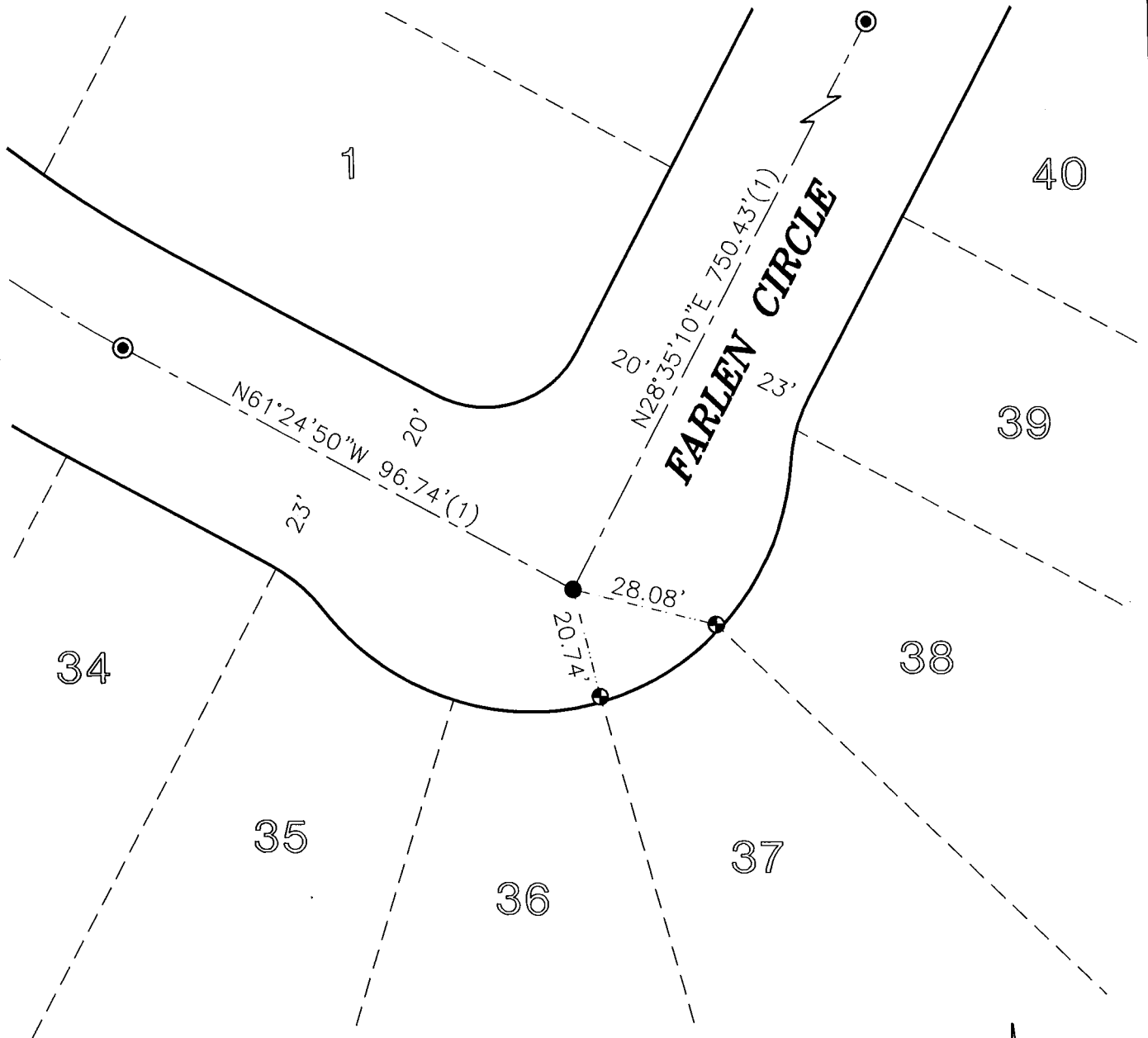
This Corner Record was received 5/12/2008
and examined and filed 5/15/2008
Signed [Signature] P.L.S. or R.C.E. No. 7965
Title Assoc. L.S.



County Surveyor's Comment _____

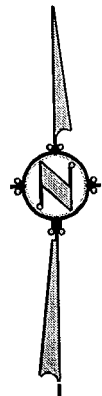
CORNER RECORD
NORTH DOUGLAS VILLAGE 6
FARLEN CIRCLE - 351 B.M. 6

CITY OF RANCHO CORDOVA
COUNTY OF SACRAMENTO STATE OF CALIFORNIA



LEGEND

- SET 3/4" IRON PIPE W/PLUG
STAMPED L.S. 7944 PER (1)
- SET 1" BRASS DISC STAMPED L.S.7944
AT 1.00 FOOT PROJECTION PER (1)
- (1) 351 B.M. 6



SCALE: 1"=30'