

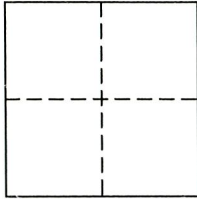
CORNER RECORD

Document Number 1872

City of RANCHO CORDOVA

County of SACRAMENTO, California

Brief Legal Description ANATOLIA III VILLAGE 23 (356 B.M. 2) SECTION 20, T. 8 N., R. 7 E., M.D.M.



CORNER TYPE

Government Type  Control   
Meander  Property   
Rancho  Other   
Date of Survey 4/28/08

COORDINATES (Optional)

N. \_\_\_\_\_  
E. \_\_\_\_\_  
Zone \_\_\_\_\_ NAD27  NAD83   
NAD83 Epoch \_\_\_\_\_  
Vert. Datum: NGVD29  NAVD88   
Meas. Units: Metric  Imperial

Corner - Left as found  Found and tagged  Established  Reestablished  Rebuilt

Identification and type of corner found: Evidence used to identify or procedure used to establish or reestablish the corner:  
A THREE-QUARTER INCH (3/4") IRON PIPE WITH PLUG STAMPED L.S. 7944 MARKING THE INTERSECTION OF THE CENTERLINE OF WINDMOOR COURT AND THE NORTH LINE OF LOT 117 AS SHOWN ON THAT CERTAIN FINAL MAP ENTITLED "ANATOLIA III VILLAGE 23" FILED FOR RECORD IN BOOK 356 OF MAPS, AT PAGE 2, SACRAMENTO COUNTY RECORDS WAS NOT SET. A FIVE-EIGHTHS INCH (5/8") REBAR WITH PLASTIC CAP STAMPED L.S. 7944 WAS SET AS SHOWN ON SAID FINAL MAP.

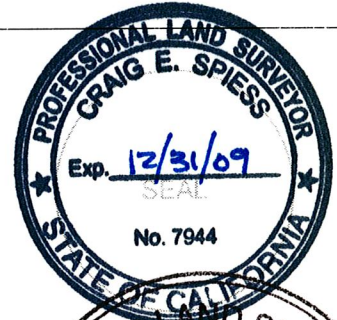
A Description of the physical condition of the monument as found and as set or reset:  
NO MONUMENTS FOUND. SET FIVE-EIGHTHS INCH (5/8") REBAR WITH PLASTIC CAP STAMPED L.S. 7944 IN GOOD CONDITION.

SURVEYOR'S STATEMENT

This Corner Record was prepared by me or under my direction in conformance with the Land Surveyor's Act on APRIL 28, 2008  
Signed Craig E. Spiess P.L.S. or R.C.E. No. 7944

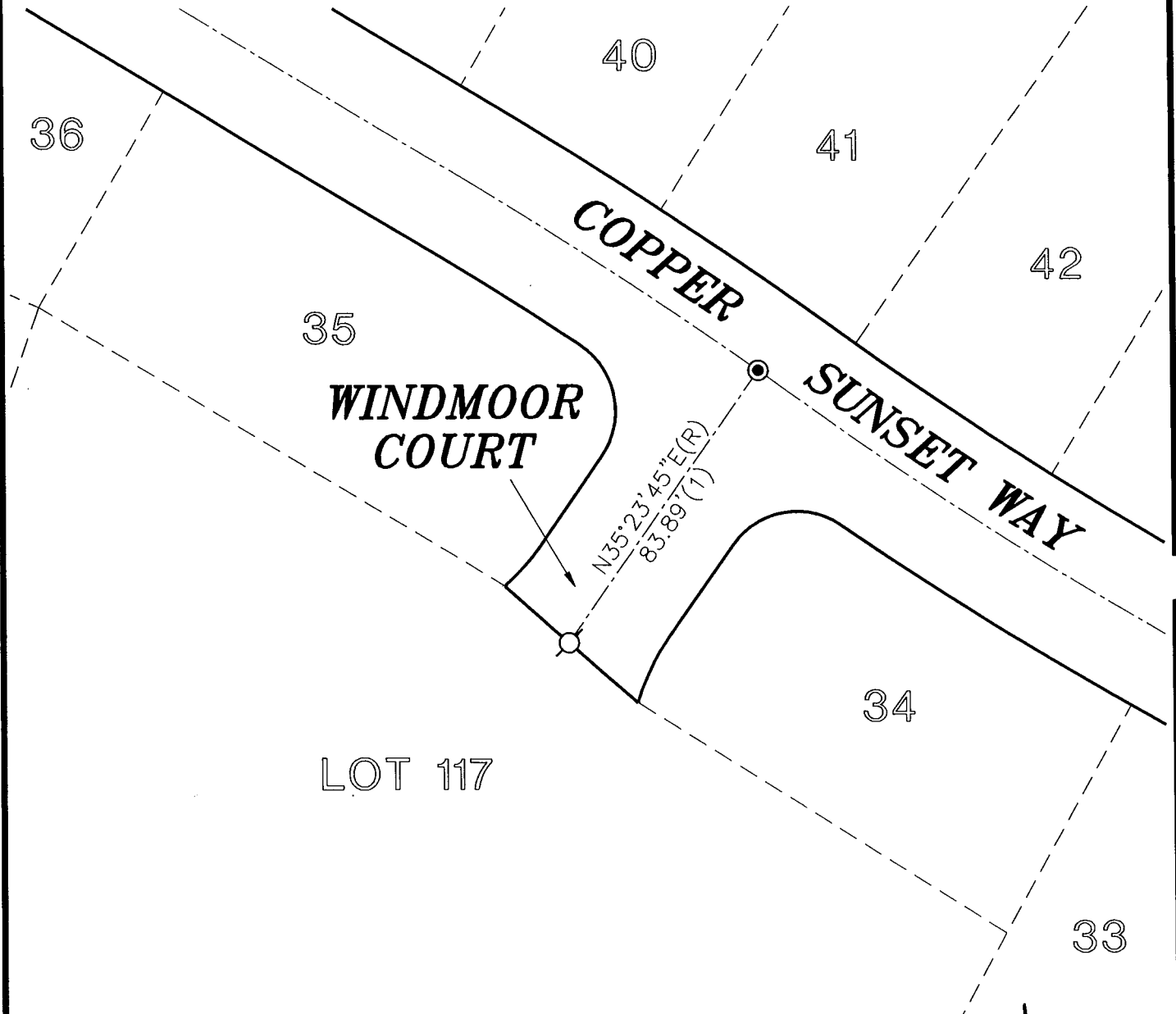
COUNTY SURVEYOR'S STATEMENT

This Corner Record was received 5/12/2008  
and examined and filed 5/15/2008  
Signed Larry S. Savio P.L.S. or R.C.E. No. 7965  
Title ASSOCIATE LAND SURVEYOR



County Surveyor's Comment \_\_\_\_\_

CORNER RECORD  
ANATOLIA III VILLAGE 23  
WINDMOOR COURT - 356 B.M. 2  
CITY OF RANCHO CORDOVA  
COUNTY OF SACRAMENTO STATE OF CALIFORNIA



LEGEND

- SET 3/4" IRON PIPE W/PLUG  
STAMPED L.S. 7944 PER (1)
- SET 5/8" REBAR W/CAP L.S. 7944
- (1) 356 B.M. 2

SCALE: 1"=40'