

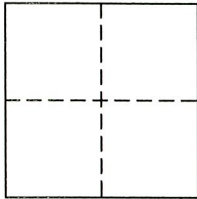
CORNER RECORD

Document Number 1869

City of RANCHO CORDOVA

County of SACRAMENTO, California

Brief Legal Description NORTHEAST CORNER OF SECTION 20, T. 8 N., R. 7 E., M.D.M. (332 B.M. 4)



CORNER TYPE

Government Type Meander Rancho Date of Survey 4/28/08 Control Property Other

COORDINATES (Optional)

N. _____ E. _____ Zone _____ NAD27 NAD83 NAD83 Epoch _____ Vert. Datum: NGVD29 NAVD88 Meas. Units: Metric Imperial

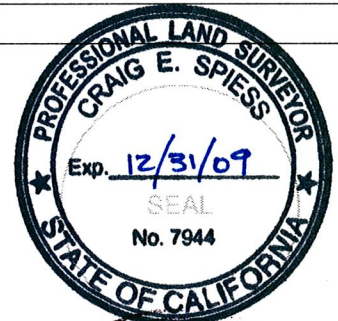
Corner - Left as found Found and tagged Established Reestablished Rebuilt

Identification and type of corner found: Evidence used to identify or procedure used to establish or reestablish the corner: A TWO INCH (2") BRASS CAP STAMPED L.S. 3923 1986 MARKING THE SECTION CORNER COMMON TO SECTIONS 16, 21, 20, AND 17, T. 8 N., R. 7 E., M.D.M. PER RECORD OF SURVEY IN BOOK 40 OF SURVEYS, AT PAGE 44, SACRAMENTO COUNTY RECORDS WAS DESTROYED DUE TO ROAD CONSTRUCTION. SEE CORNER RECORD DOCUMENT #1054 AND THAT CERTAIN FINAL MAP ENTITLED "ANATOLIA III VILLAGE 24" FILED FOR RECORD IN BOOK 332 OF MAPS, AT PAGE 4, SACRAMENTO COUNTY RECORDS. A WITNESS CORNER WAS SET DUE TO A CONFLICT WITH THE STREET IMPROVEMENTS FOR RANCHO CORDOVA PARKWAY FORMERLY KNOWN AS JAEGER ROAD.

A Description of the physical condition of the monument as found and as set or reset: SET A TWO AND ONE-HALF INCH (2-1/2") BRASS DISK WITNESS CORNER IN A MONUMENT BOX ALONG THE PROJECTION OF THE NORTH LINE OF SAID SECTION 20, NORTH 89°54'53" EAST A DISTANCE OF 5.00 FEET FROM THE ORIGINAL LOCATION.

SURVEYOR'S STATEMENT

This Corner Record was prepared by me or under my direction in conformance with the Land Surveyor's Act on APRIL 28, 2008 Signed [Signature] P.L.S. or R.C.E. No. 7944

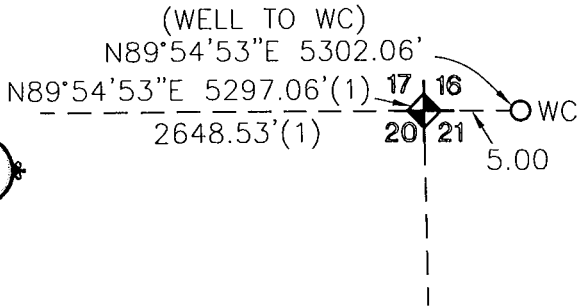


COUNTY SURVEYOR'S STATEMENT

This Corner Record was received 5/12/08 and examined and filed 5/15/08 Signed [Signature] P.L.S. or R.C.E. No. 7965 Title ASSOCIATE LAND SURVEYOR



County Surveyor's Comment _____



DETAIL "A" - N.T.S.

CORNER RECORD
 ANATOLIA III VILLAGE 24 - 332 B.M. 4
 NORTHEAST CORNER OF SECTION 20

CITY OF RANCHO CORDOVA
 COUNTY OF SACRAMENTO STATE OF CALIFORNIA

(1) = 332 B.M. 4

WC = WITNESS CORNER

SCALE: 1"=800'

N89°54'53"E 5302.06'(WELL TO WC)
 N89°54'53"E 5297.06'(1)

SEE DETAIL "A"

