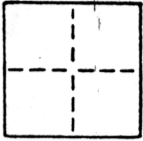


CORNER RECORD

COUNTY OF SACRAMENTO T. R. MERIDIAN CALIFORNIA
 CORNER TYPE: GOVT. CORNER MEANDER RANCHO CONTROL OTHER
 CORNER IDENTIFICATION — DATE OF VISIT 19



PORTION SEC 63 - RANCHO DEL PASO

CORNER — LEFT AS FOUND FOUND AND TAGGED REESTABLISHED OBLITERATED CORNER REBUILT

PHYSICAL DESCRIPTION OF CORNER FOUND; EVIDENCE AND METHOD USED TO IDENTIFY OR REESTABLISH

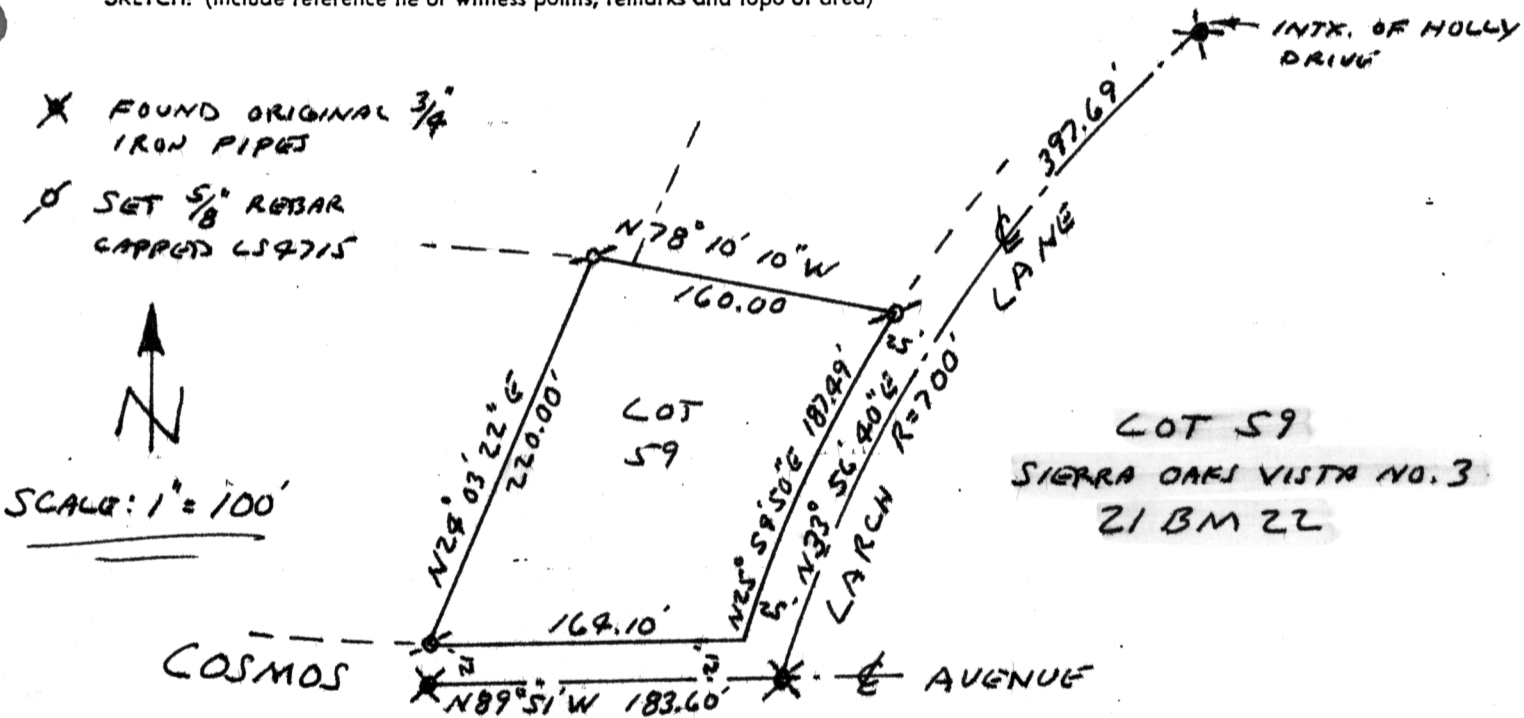
SEE SKETCH

PHYSICAL DESCRIPTION OF MONUMENTS REBUILT OR PERPETUATED

SEE SKETCH

CALIFORNIA COORDINATE SYSTEM ORDER: FIRST SECOND THIRD
 STATIONS USED: NGS (USC & GS) STATE COUNTY OTHER STATION STATION
 ZONE ELEVATION NORTHINGS (Y) EASTINGS (X)

SKETCH: (Include reference tie or witness points, remarks and topo of area)



SURVEYOR'S CERTIFICATE
 THIS CORNER RECORD WAS PREPARED BY ME OR UNDER MY DIRECTION IN CONFORMANCE WITH THE LAND SURVEYORS ACT ON JULY 8 1988
 SIGNED: William F. McKinney
 L.S. or R.C.E. No.: 654715

COUNTY SURVEYOR'S CERTIFICATE
 THE CORNER RECORD WAS RECEIVED July 13 1988 AND EXAMINED AND FILED July 18 1988
 BY: Patricia
 TITLE: Engineering Technician
 DOCUMENT No. 186
 STATEMENT ON BACK OF SHEET YES NO

