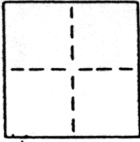


**CORNER RECORD**

COUNTY OF SACRAMENTO T. 10 N. R. 6 E. MOUNT DIABLO MERIDIAN CALIFORNIA

CORNER TYPE: GOV'T. CORNER  MEANDER  RANCHO  CONTROL  OTHER

CORNER IDENTIFICATION - DATE OF VISIT APRIL 11 19 88



CORNERS OF LOT 5, COUNTRY WOODS  
(117 B.M. 20)

CORNER - LEFT AS FOUND  FOUND AND TAGGED  REESTABLISHED OBLITERATED CORNER  REBUILT

PHYSICAL DESCRIPTION OF CORNER FOUND: EVIDENCE AND METHOD USED TO IDENTIFY OR REESTABLISH \_\_\_\_\_

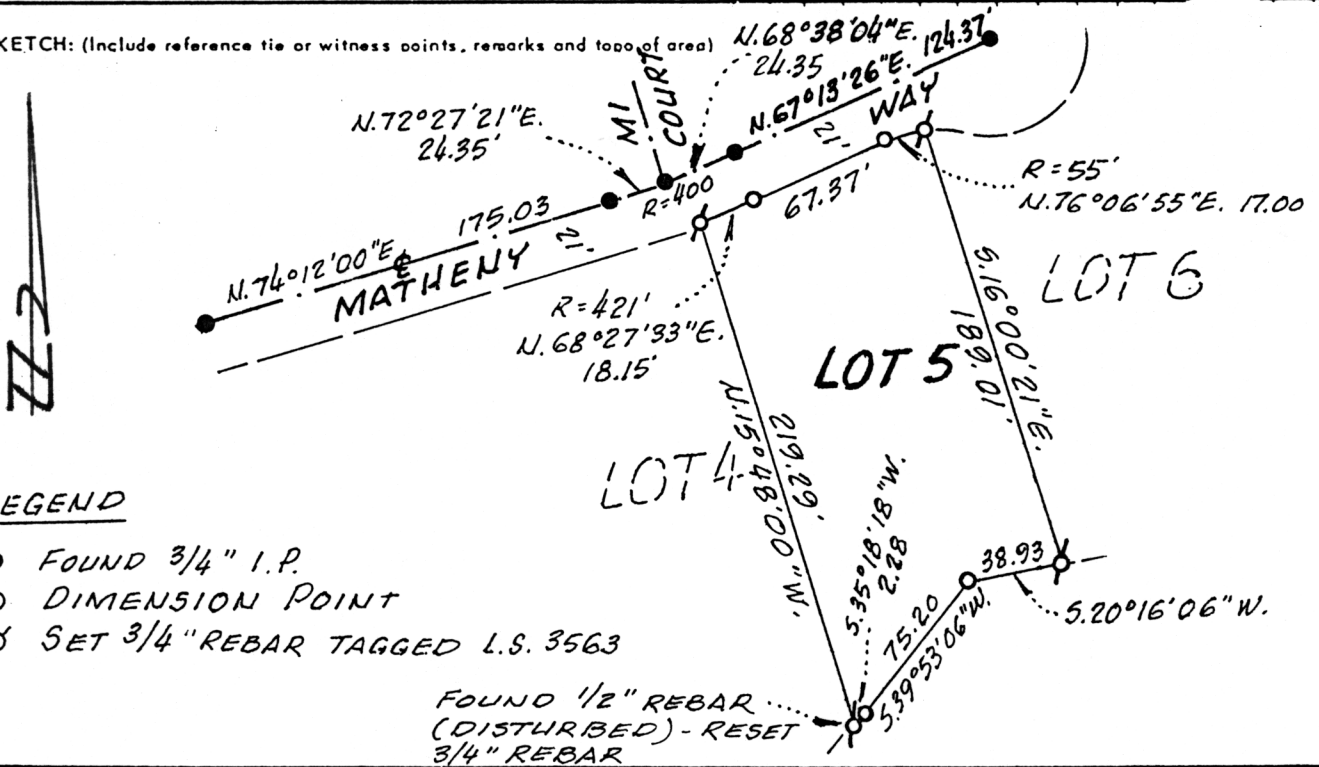
FOUND CENTERLINE MONUMENTS ON MATHENY WAY PER RECORD MAP

PHYSICAL DESCRIPTION OF MONUMENTS REBUILT OR PERPETUATED \_\_\_\_\_

SET 3/4" REBARS TAGGED L.S. 3563 AT LOT CORNERS AS SHOWN  
HEREON

CALIFORNIA COORDINATE SYSTEM ORDER: FIRST  SECOND  THIRD   
STATIONS USED: NGS (USC & GS)  STATE  COUNTY  OTHER  STATION \_\_\_\_\_ STATION \_\_\_\_\_  
ZONE \_\_\_\_\_ ELEVATION \_\_\_\_\_ NORTHINGS (Y) \_\_\_\_\_ EASTINGS (X) \_\_\_\_\_

SKETCH: (Include reference tie or witness points, remarks and topo of area)



**LEGEND**

- FOUND 3/4" I.P.
- DIMENSION POINT
- ⊗ SET 3/4" REBAR TAGGED L.S. 3563

FOUND 1/2" REBAR  
(DISTURBED) - RESET  
3/4" REBAR

**SURVEYOR'S CERTIFICATE**

THIS CORNER RECORD WAS PREPARED BY ME OR UNDER MY DIRECTION IN CONFORMANCE WITH THE LAND SURVEYORS ACT

ON MAY 3 19 88

SIGNED: Lloyd C. Parker  
L.S. No.: 3563

SEAL



**COUNTY SURVEYOR'S CERTIFICATE**

THIS CORNER RECORD WAS RECEIVED June 7 19 88  
AND EXAMINED AND FILED June 9 19 88

BY: [Signature]  
TITLE: Supervising Engineering Geol

DOCUMENT No. 185

STATEMENT ON BACK OF SHEET

YES  NO