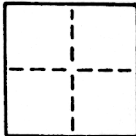


## CORNER RECORD

COUNTY OF Sacramento T. \_\_\_\_\_ R. \_\_\_\_\_ MERIDIAN \_\_\_\_\_ CALIFORNIA

CORNER TYPE: GOVT. CORNER  MEANDER  RANCHO  CONTROL  OTHER

CORNER IDENTIFICATION — DATE OF VISIT October 1984



Set all corners of Lot 8, Plat of Wright & Kimbrough Tract No. 34

CORNER — LEFT AS FOUND  FOUND AND TAGGED  REESTABLISHED OBLITERATED CORNER  REBUILT

PHYSICAL DESCRIPTION OF CORNER FOUND; EVIDENCE AND METHOD USED TO IDENTIFY OR REESTABLISH

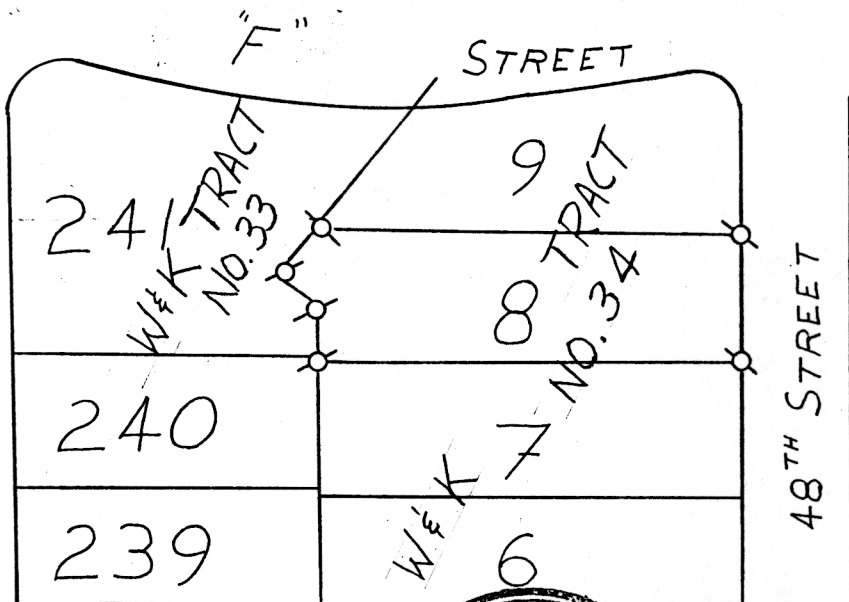
Corners established per Official Plat of Wright & Kimbrough Tract No. 34, found monuments and street improvements.

PHYSICAL DESCRIPTION OF MONUMENTS REBUILT OR PERPETUATED

(See sketch below)

CALIFORNIA COORDINATE SYSTEM ORDER: FIRST  SECOND  THIRD   
 STATIONS USED: NGS (USC & GS)  STATE  COUNTY  OTHER  STATION \_\_\_\_\_ STATION \_\_\_\_\_  
 ZONE \_\_\_\_\_ ELEVATION \_\_\_\_\_ NORTHINGS (Y) \_\_\_\_\_ EASTINGS (X) \_\_\_\_\_

SKETCH: (Include reference tie or witness points, remarks and topo of area)



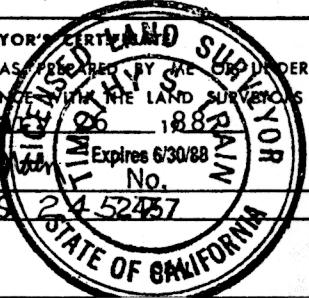
**LEGEND:**

Q : Denotes 1 1/4" O.D. Iron Pipe Monument with tag  
 L.S. 2457 grouted in top. Set on this survey.

FB 175A, Pg.17

WO# 8410-04

SURVEYOR'S CERTIFICATE  
 THIS CORNER RECORD WAS PREPARED BY ME OR UNDER MY DIRECTION IN CONFORMANCE WITH THE LAND SURVEYORS ACT ON January 26 1888  
 SIGNED: James S. [Signature] Expires 6/30/88 No. 2452457  
 L.S. or R.C.E. No.: L.S. 2452457



COUNTY SURVEYOR'S CERTIFICATE  
 THE CORNER RECORD WAS RECEIVED MAY 17 1988  
 AND EXAMINED AND FILED MAY 17 1988  
 BY: [Signature]  
 TITLE: Resurvey Engineering Job  
 DOCUMENT No. 184

STATEMENT ON BACK OF SHEET

YES  NO