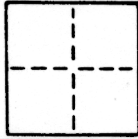


# CORNER RECORD

COUNTY OF Sacramento T. \_\_\_\_\_ R. \_\_\_\_\_ MERIDIAN \_\_\_\_\_ CALIFORNIA  
 CORNER TYPE: GOV'T. CORNER  MEANDER  RANCHO  CONTROL  OTHER   
 CORNER IDENTIFICATION - DATE OF VISIT December 1983



Set all corners of Lot 369, Plat of Strawberry Manor Unit No. 3

CORNER - LEFT AS FOUND  FOUND AND TAGGED  REESTABLISHED OBLITERATED CORNER  REBUILT   
 PHYSICAL DESCRIPTION OF CORNER FOUND; EVIDENCE AND METHOD USED TO IDENTIFY OR REESTABLISH

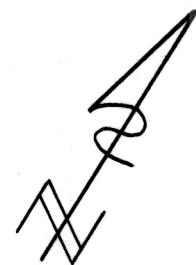
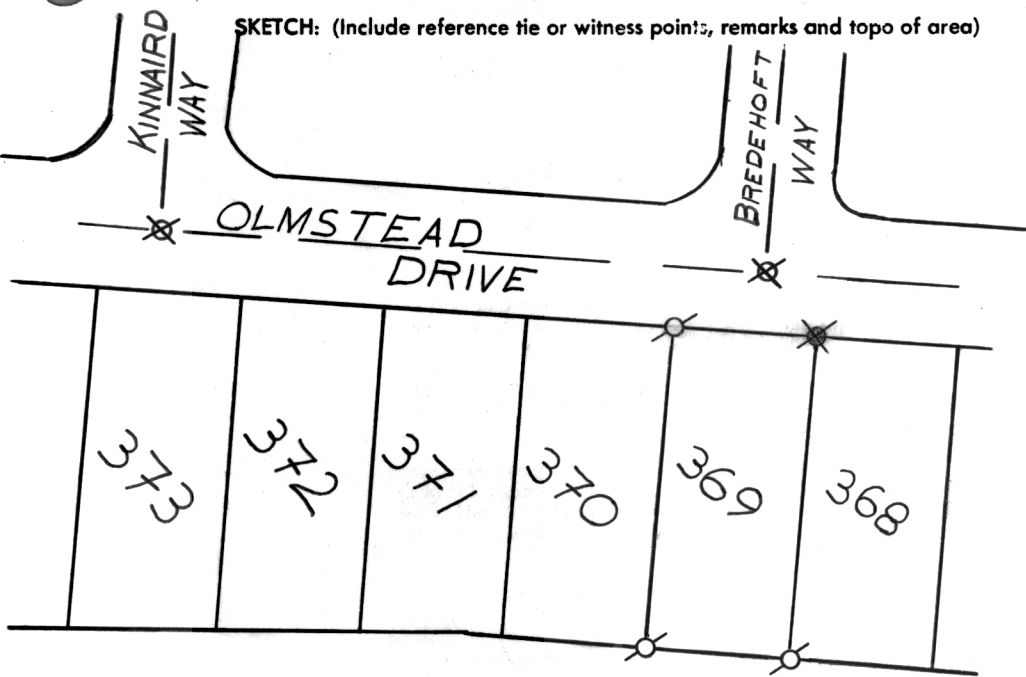
Corners established per Official Plat of Strawberry Manor Unit No.3 and found street monuments.

PHYSICAL DESCRIPTION OF MONUMENTS REBUILT OR PERPETUATED

(See sketch below)

CALIFORNIA COORDINATE SYSTEM ORDER: FIRST  SECOND  THIRD   
 STATIONS USED: NGS (USC & GS)  STATE  COUNTY  OTHER  STATION \_\_\_\_\_ STATION \_\_\_\_\_  
 ZONE \_\_\_\_\_ ELEVATION \_\_\_\_\_ NORTHINGS (Y) \_\_\_\_\_ EASTINGS (X) \_\_\_\_\_

SKETCH: (Include reference tie or witness points, remarks and topo of area)



**LEGEND:**

- ⊙: Denotes 1 1/4" O.D. Iron Pipe Monument with tag L.S. 2457 grouted in top. Set on this survey.
- ⊛: Denotes nail and tag, L.S. 2457, set in top of fence post on this survey.
- ⊗: Denotes fnd. 4" square conc. mon. with copper pin.

FB 165, Pg. 29  
 WO# 8310-12

**SURVEYOR'S CERTIFICATE**  
 THIS CORNER RECORD WAS PREPARED BY ME OR UNDER MY DIRECTION IN CONFORMANCE WITH THE LAND SURVEYORS ACT ON January 1988  
 BY: Jonathan S. Nelson  
 SIGNED: \_\_\_\_\_  
 L.S. or R.C.E. No.: L.S. 2457 2457  
 LICENSED LAND SURVEYOR  
 STATE OF CALIFORNIA  
 Expires 6/30/88  
 No. \_\_\_\_\_

**COUNTY SURVEYOR'S CERTIFICATE**  
 THE CORNER RECORD WAS RECEIVED MAY 17 1988  
 AND EXAMINED AND FILED MAY 19 1988  
 BY: [Signature]  
 TITLE: Surveyor Engineering Dept.  
 DOCUMENT No. 183 0 0 0  
 STATEMENT ON BACK OF SHEET YES  NO