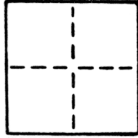


CORNER RECORD

COUNTY OF Sacramento T. 8N R. 5E M.D. MERIDIAN CALIFORNIA
 CORNER TYPE: GOVT. CORNER MEANDER RANCHO CONTROL OTHER
 CORNER IDENTIFICATION — DATE OF VISIT February 1984



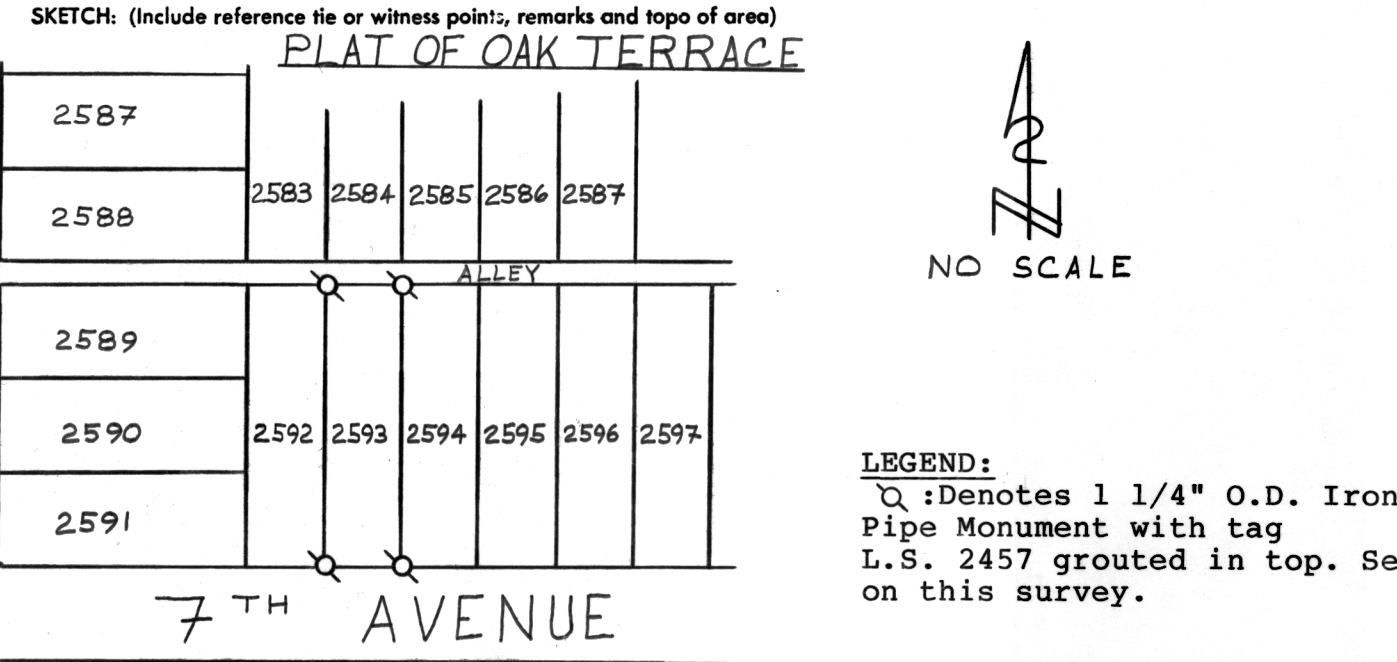
Set all corners of Lot 2593, Plat of Oak Terrace

CORNER — LEFT AS FOUND FOUND AND TAGGED REESTABLISHED OBLITERATED CORNER REBUILT
 PHYSICAL DESCRIPTION OF CORNER FOUND; EVIDENCE AND METHOD USED TO IDENTIFY OR REESTABLISH

Corners established per official Plat of Oak Terrace, found monuments and street improvements.

PHYSICAL DESCRIPTION OF MONUMENTS REBUILT OR PERPETUATED
 (See sketch below)

CALIFORNIA COORDINATE SYSTEM ORDER: FIRST SECOND THIRD
 STATIONS USED: NGS (USC & GS) STATE COUNTY OTHER STATION _____ STATION _____
 ZONE _____ ELEVATION _____ NORTHINGS (Y) _____ EASTINGS (X) _____



LEGEND:
 Q : Denotes 1 1/4" O.D. Iron Pipe Monument with tag
 L.S. 2457 grouted in top. Set on this survey.

FB 167 PG 29
 WO# 8401-01



SURVEYOR'S CERTIFICATE
 CORNER RECORD WAS PREPARED BY ME OR UNDER MY DIRECTION IN CONFORMANCE WITH THE LAND SURVEYORS ACT
 April 26 19 88
 SIGNED: Timothy S. Train
 R.C.E. No.: L.S. 2457

COUNTY SURVEYOR'S CERTIFICATE
 THE CORNER RECORD WAS RECEIVED MAY 17 1988
 AND EXAMINED AND FILED MAY 19 1988
 BY: [Signature]
 TITLE: Engineering
 DOCUMENT No. 181

SEAL

STATEMENT ON BACK OF SHEET YES NO