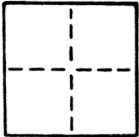


CORNER RECORD

COUNTY OF Sacramento T. _____ R. _____ MERIDIAN _____ CALIFORNIA

CORNER TYPE: GOV'T. CORNER MEANDER RANCHO CONTROL OTHER

CORNER IDENTIFICATION — DATE OF VISIT April 1984



Set NE & NW corners of Lot 146, Plat of Golf Course Terrace Unit No. 19

CORNER — LEFT AS FOUND FOUND AND TAGGED REESTABLISHED OBLITERATED CORNER REBUILT

PHYSICAL DESCRIPTION OF CORNER FOUND; EVIDENCE AND METHOD USED TO IDENTIFY OR REESTABLISH

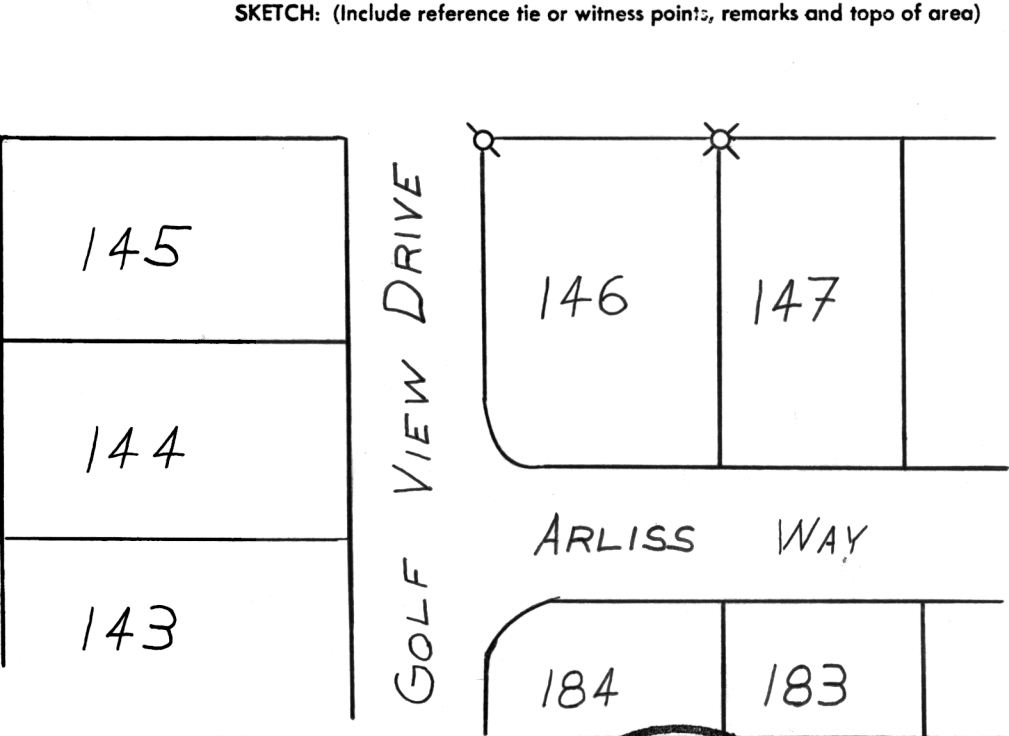
Corners established per Official Plat of Golf Course Terrace Unit No. 19 and street improvements.

PHYSICAL DESCRIPTION OF MONUMENTS REBUILT OR PERPETUATED

(See sketch below)

CALIFORNIA COORDINATE SYSTEM ORDER: FIRST SECOND THIRD
 STATIONS USED: NGS (USC & GS) STATE COUNTY OTHER STATION _____ STATION _____
 ZONE _____ ELEVATION _____ NORTHINGS (Y) _____ EASTINGS (X) _____

SKETCH: (Include reference tie or witness points, remarks and topo of area)



LEGEND:
 ⊙ : Denotes 1 1/4" O.D. Iron Pipe Monument with tag L.S. 2457 grouted in top. Set on this survey.
 ⊗ : Denotes chiseled cross "+" set on this survey.

FB 171, Pg.56
 WO# 8404-14

SURVEYOR'S CERTIFICATE
 THIS CORNER RECORD WAS PREPARED BY ME OR UNDER MY DIRECTION IN CONFORMANCE WITH THE LAND SURVEYOR ACT ON January 1988
 SIGNED: [Signature]
 L.S. No.: LS 2457
 Expires 6/30/88 No. 2457



COUNTY SURVEYOR'S CERTIFICATE
 THE CORNER RECORD WAS RECEIVED MAY 17 1988 AND EXAMINED AND FILED MAY 18 1988
 BY: [Signature]
 TITLE: Supervising Engineering Geol
 DOCUMENT No. 178
 STATEMENT ON BACK OF SHEET YES NO