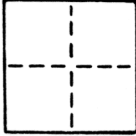


CORNER RECORD

COUNTY OF Sacramento T. 8N R. 5E M.D. MERIDIAN CALIFORNIA
 CORNER TYPE: GOVT. CORNER MEANDER RANCHO CONTROL OTHER
 CORNER IDENTIFICATION — DATE OF VISIT November 1984



Set all corners of Lot 2723, Map No. 2 of Elmhurst.

CORNER — LEFT AS FOUND FOUND AND TAGGED REESTABLISHED OBLITERATED CORNER REBUILT

PHYSICAL DESCRIPTION OF CORNER FOUND; EVIDENCE AND METHOD USED TO IDENTIFY OR REESTABLISH

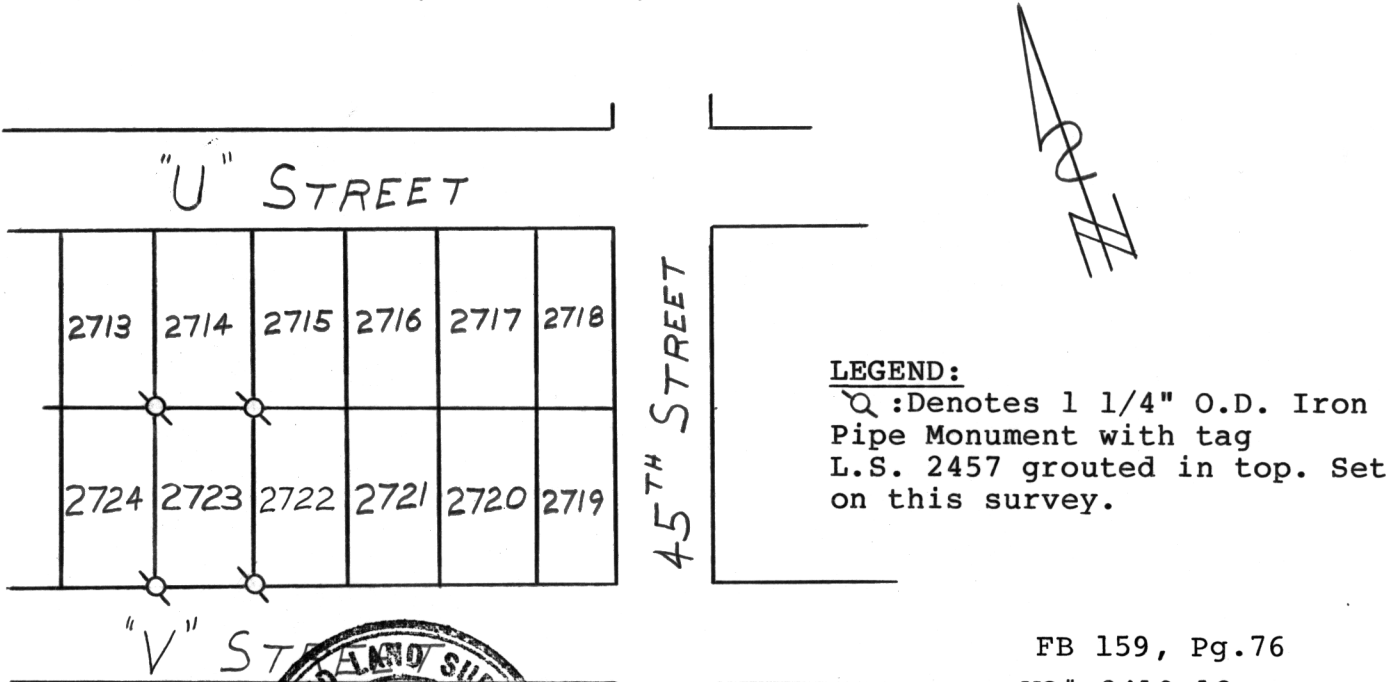
Corners established per Official Map No. 2 of Elmhurst and street improvements

PHYSICAL DESCRIPTION OF MONUMENTS REBUILT OR PERPETUATED

(See sketch below)

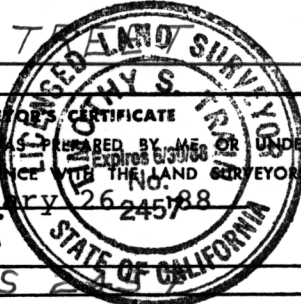
CALIFORNIA COORDINATE SYSTEM ORDER: FIRST SECOND THIRD
 STATIONS USED: NGS (USC & GS) STATE COUNTY OTHER STATION _____ STATION _____
 ZONE _____ ELEVATION _____ NORTHINGS (Y) _____ EASTINGS (X) _____

SKETCH: (Include reference tie or witness points, remarks and topo of area)



FB 159, Pg.76
 WO# 8410-12

SURVEYOR'S CERTIFICATE
 THIS CORNER RECORD WAS PREPARED BY ME OR UNDER MY DIRECTION IN CONFORMANCE WITH THE LAND SURVEYORS ACT ON January 26 1988
 SIGNED: Jonathan S. Min
 L.S. No. LS 2457



COUNTY SURVEYOR'S CERTIFICATE
 THE CORNER RECORD WAS RECEIVED MAY 17 1988 AND EXAMINED AND FILED MAY 18 1988
 BY: David Sarker
 TITLE: Supervising Engineering Tech
 DOCUMENT No. 176

SEAL

STATEMENT ON BACK OF SHEET YES NO