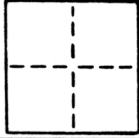


CORNER RECORD

COUNTY OF Sacramento T. _____ R. _____ MERIDIAN _____ CALIFORNIA
 CORNER TYPE: GOV'T. CORNER MEANDER RANCHO CONTROL OTHER
 CORNER IDENTIFICATION - DATE OF VISIT March 1988



Set all corners of Lot 57, Amended Plat of Ellwood.

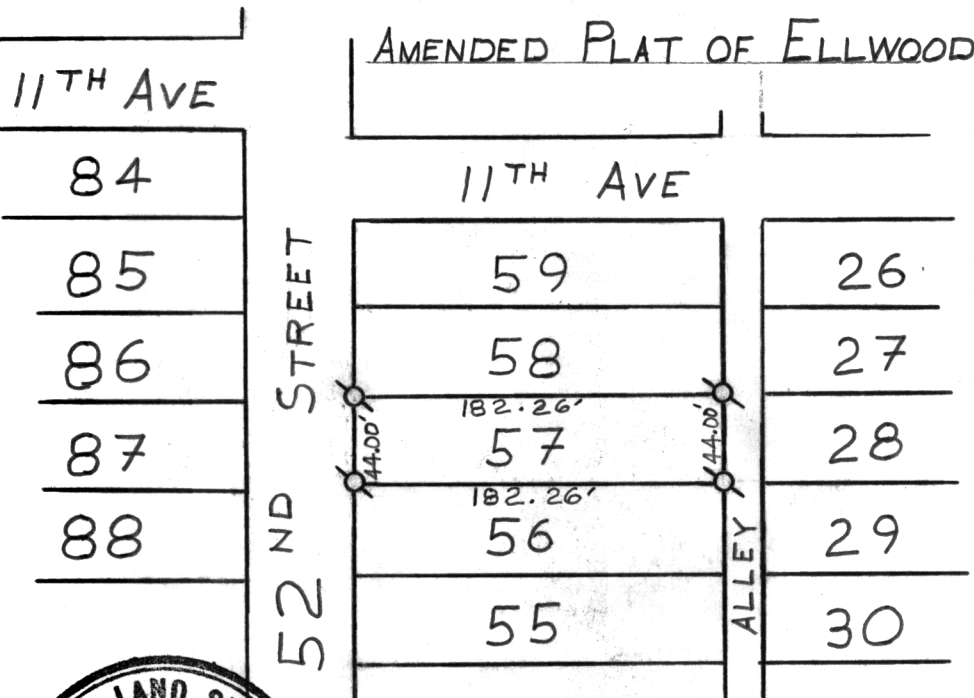
CORNER - LEFT AS FOUND FOUND AND TAGGED REESTABLISHED OBLITERATED CORNER REBUILT
 PHYSICAL DESCRIPTION OF CORNER FOUND; EVIDENCE AND METHOD USED TO IDENTIFY OR REESTABLISH

Corners established per Official "Amended Plat of Ellwood" and street improvements.

PHYSICAL DESCRIPTION OF MONUMENTS REBUILT OR PERPETUATED
 (See sketch below)

CALIFORNIA COORDINATE SYSTEM ORDER: FIRST SECOND THIRD
 STATIONS USED: NGS (USC & GS) STATE COUNTY OTHER STATION _____ STATION _____
 ZONE _____ ELEVATION _____ NORTHINGS (Y) _____ EASTINGS (X) _____

SKETCH: (Include reference tie or witness points, remarks and topo of area)



No SCALE

LEGEND:
 Q: Denotes 1 1/4" O.D. Iron Pipe Monument with tag L.S. 2457 grouted in top. Set on this survey.

W.O. 8803-11
 F.B. 215 Pg. 72



SURVEYOR'S CERTIFICATE
 THIS CORNER RECORD WAS PREPARED BY ME OR UNDER MY DIRECTION IN CONFORMANCE WITH THE LAND SURVEYORS ACT
 April 8 19 88
 SIGNED: Timothy S. Trahan
 R.C.E. No.: L.S. 2457

COUNTY SURVEYOR'S CERTIFICATE
 THE CORNER RECORD WAS RECEIVED MAY 17, 1988
 AND EXAMINED AND FILED MAY 18, 1988
 BY: [Signature]
 TITLE: Engineering
 DOCUMENT No. 175

STATEMENT ON BACK OF SHEET YES NO