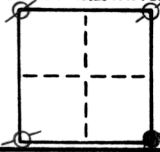


CORNER RECORD

COUNTY OF SACRAMENTO T. _____ R. _____ MT. DIABLO MERIDIAN CALIFORNIA

CORNER TYPE: GOV'T. CORNER MEANDER RANCHO CONTROL OTHER LOT CORNERS
 CORNER IDENTIFICATION — DATE OF VISIT 3/8 1988



SET 4 CORNERS OF LOT 28, COLLEGE MANOR UNIT NO. 1

CORNER — LEFT AS FOUND FOUND AND TAGGED REESTABLISHED OBLITERATED CORNER REBUILT

PHYSICAL DESCRIPTION OF CORNER FOUND; EVIDENCE AND METHOD USED TO IDENTIFY OR REESTABLISH

PHYSICAL DESCRIPTION OF MONUMENTS REBUILT OR PERPETUATED

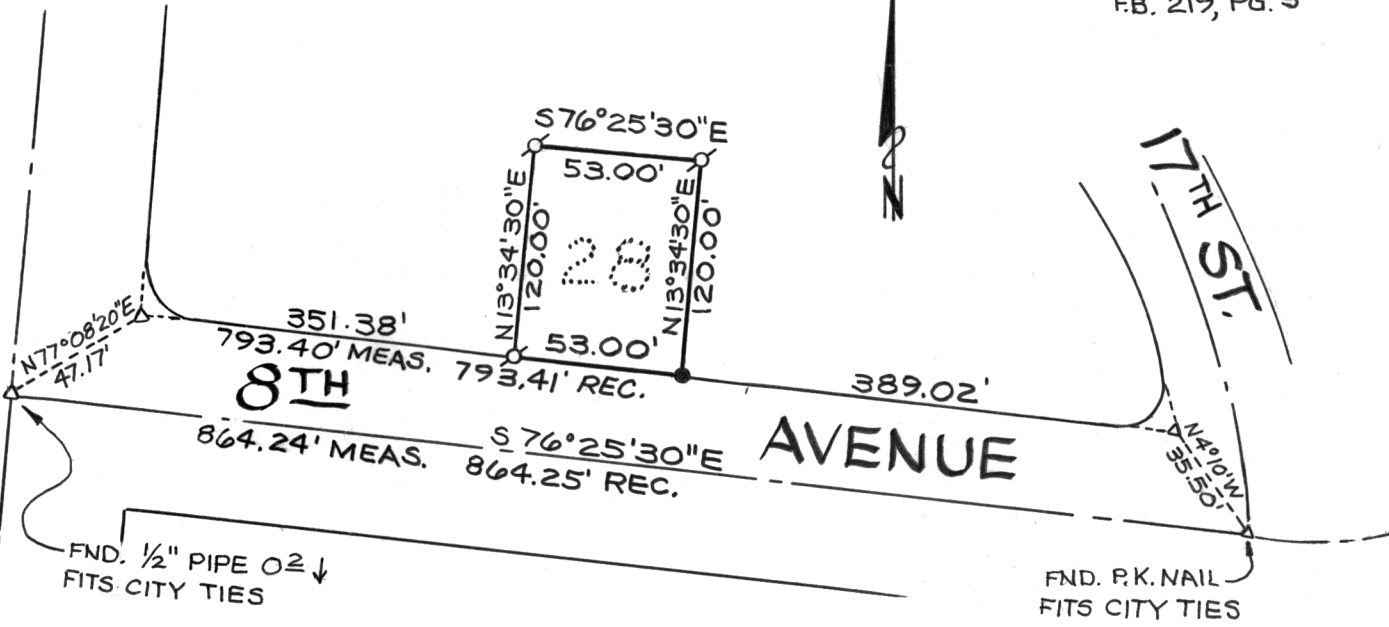
SET 1 1/4" O.D. IRON PIPE MONS. TAGGED L.S. 2457 @ S.W., N.W. & N.E. CORS.
 SET NAIL & TAG L.S. 2457 IN CONC. @ S.E. COR. LOT 28, COLLEGE
 MANOR UNIT No. 1

CALIFORNIA COORDINATE SYSTEM ORDER: FIRST SECOND THIRD
 STATIONS USED: NGS (USC & GS) STATE COUNTY OTHER STATION _____ STATION _____
 ZONE _____ ELEVATION _____ NORTHINGS (Y) _____ EASTINGS (X) _____

SKETCH: (Include reference tie or witness points, remarks and topo of area)

W.O. 8802-07
 F.B. 219, PG. 3

LAND PARK DRIVE



SURVEYOR'S CERTIFICATE
 THIS CORNER RECORD WAS PREPARED BY ME OR UNDER MY
 DIRECTION IN CONFORMANCE WITH THE LAND SURVEYORS ACT
 MARCH 15 1988
 SIGNED: Timothy S. Train
 or R.C.E. No.: 2457

COUNTY SURVEYOR'S CERTIFICATE
 THE CORNER RECORD WAS RECEIVED MAY 17 1988
 AND EXAMINED AND FILED MAY 18 1988
 BY: [Signature]
 TITLE: Supervising Engineer, 2nd
 DOCUMENT No. 172

SEAL

STATEMENT ON BACK OF SHEET YES NO