

# Corner Record

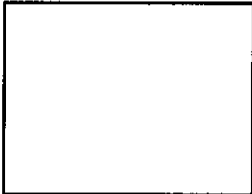
Document Number 1719

City of Rancho Cordova

County of Sacramento, California

### Brief Legal Description

The end of a 206' radius curve on Union Springs Way, 28.93 south of Explorer Dr., as shown on the "Plat of Bradshaw Woods Unit No. 3", filed in the office of the Recorder of the County of Sacramento in book 126 of maps, at page 15.



### Corner Type

### Coordinates

(Optional)

Government Corner  Control  N. \_\_\_\_\_

Meander  Property  E. \_\_\_\_\_

Rancho  Other  Zone \_\_\_\_\_ Datum \_\_\_\_\_

Date of Survey 4/17/2007 Elev. \_\_\_\_\_

Corner- Left as Found  Found and Tagged  Established  Reestablished  Rebuilt

### Identification and Type of Corner Found, Evidence used to Identify or Procedure used to Establish or Reestablish the corner:

Found 3/4" iron pipe monument at the end of a 206' radius curve on Union Springs Way, 28.93 south of Explorer Dr., as described in book 126 of maps, at page 15 filed in the office of the Recorder of Sacramento County, California. Set 3/4" Sacramento County brass tags in concrete for reference points. Refer to Sacramento County field notes E-223, page RP-04, 4/17/2007.

### A Description of the Physical Condition of the Monument as Found and as Set or Reset:

Replaced original monument on 7/2/2007 with 2" brass disc in monument well stamped "City of Rancho Cordova" in original position after original monument was destroyed as a result of construction.

## Surveyor's Statement

This Corner Record was prepared by me or under my direction in conformance with The Land Surveyor's Act on 7/19/2007

Signed Thomas F. X. Sekel  
Thomas F. X. Sekel

L.S. or R.C.E. LS 4897



## County Surveyor's Statement

This Corner Record was received 9/28, 2007 and examined and filed 10/1, 2007

Signed Larry Savio  
Larry Savio

Title: Associate Land Surveyor

County Surveyor's Comments:



EXPLORER D.

Crew: DOUG BEAN

Date: 4-17-07

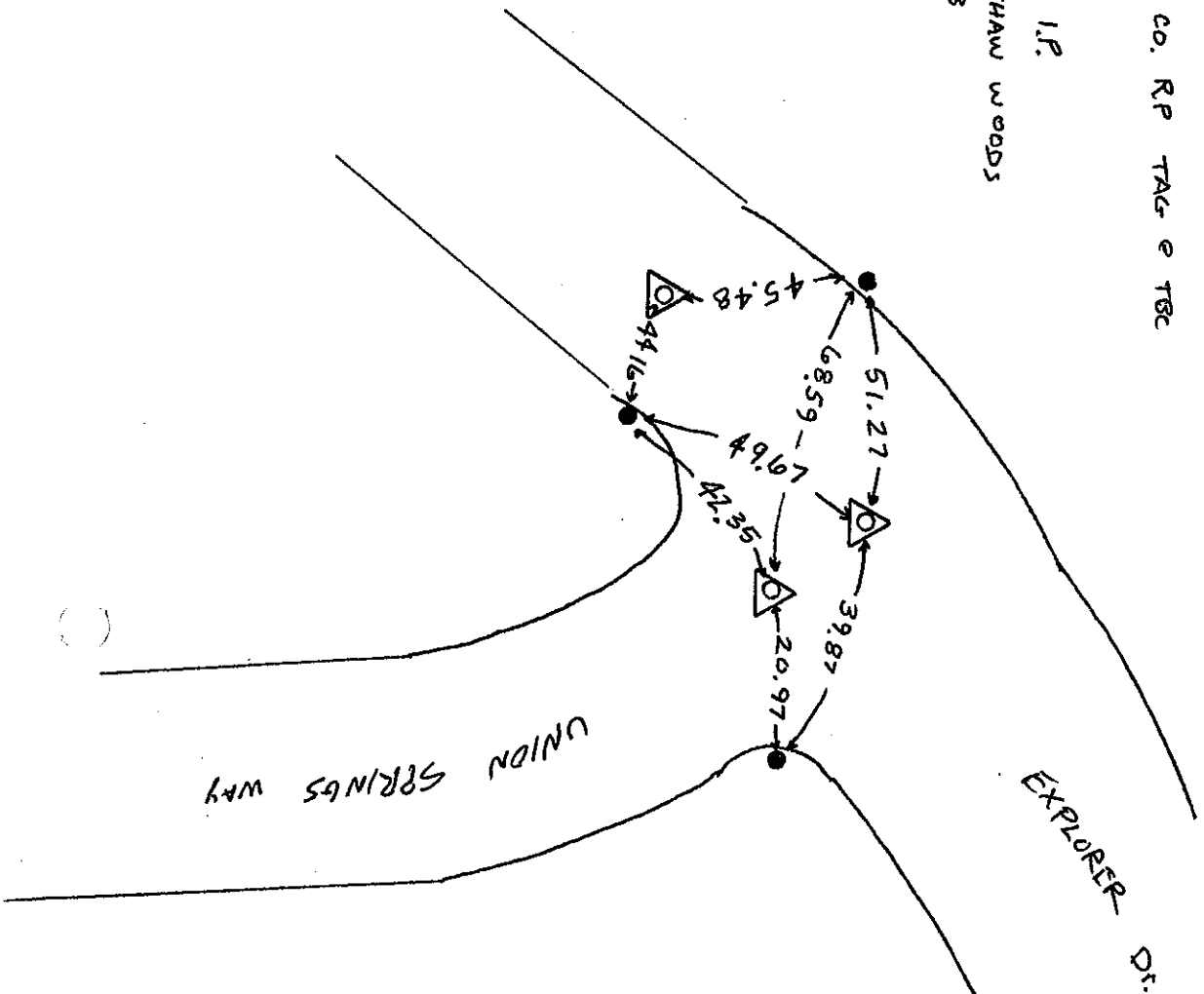
Project: RANCHO CORDOVA PWT, REHAZ

BRAD BORDOWAN

Page: RP 4

LEGEND: ● SET SAC. CO. RP TAG & TGC

○ EX 3/4" I.P.  
PER BRADSHAW WOODS  
UNIT 3



△ = SET 2" BRASS DISC IN  
MONUMENT WELL, STAMPED  
"CITY OF RANCHO CORDOVA"  
ON JULY 2, 2007.

