

# Corner Record

Document Number 1709

City of Rancho Cordova

County of Sacramento, California

### Brief Legal Description

The southerly intersection of Explorer Dr. and Greensboro Cir., as shown on the "Plat of Bradshaw Woods Unit No. 3", filed in the office of the Recorder of the County of Sacramento in book 126 of maps, at page 15.



### Corner Type

### Coordinates

(Optional)

Government Corner <input type="checkbox"/>	Control <input type="checkbox"/>	N. _____
Meander <input type="checkbox"/>	Property <input checked="" type="checkbox"/>	E. _____
Rancho <input type="checkbox"/>	Other <input type="checkbox"/>	Zone _____ Datum _____
Date of Survey <u>4/17/2007</u>		Elev. _____

Corner- Left as Found  Found and Tagged  Established  Reestablished  Rebuilt

### Identification and Type of Corner Found, Evidence used to Identify or Procedure used to Establish or Reestablish the corner:

Found 3/4" iron pipe monument at the southerly intersection of Explorer Dr. and Greensboro Cir., as described in book 126 of maps, at page 15 filed in the office of the Recorder of Sacramento County, California. Set 3/4" Sacramento County brass tags in concrete for reference points. Refer to Sacramento County field notes E-223, page RP-01, 4/17/2007.

### A Description of the Physical Condition of the Monument as Found and as Set or Reset:

Replaced original monument on 7/2/2007 with 2" brass disc in monument well stamped "City of Rancho Cordova" in original position after original monument was destroyed as a result of construction.

## Surveyor's Statement

This Corner Record was prepared by me or under my direction in conformance with The Land Surveyor's Act on 7/19/2007

Signed Thomas F. X. Sekel  
Thomas F. X. Sekel

L.S. or R.C.E. LS 4897



## County Surveyor's Statement

This Corner Record was received 9/28, 2007 and examined and filed 10/11, 2007

Signed Larry Savio  
Larry Savio

Title: Associate Land Surveyor

County Surveyor's Comments:



EXPLORER DR.

Crew: DOUG BEAL

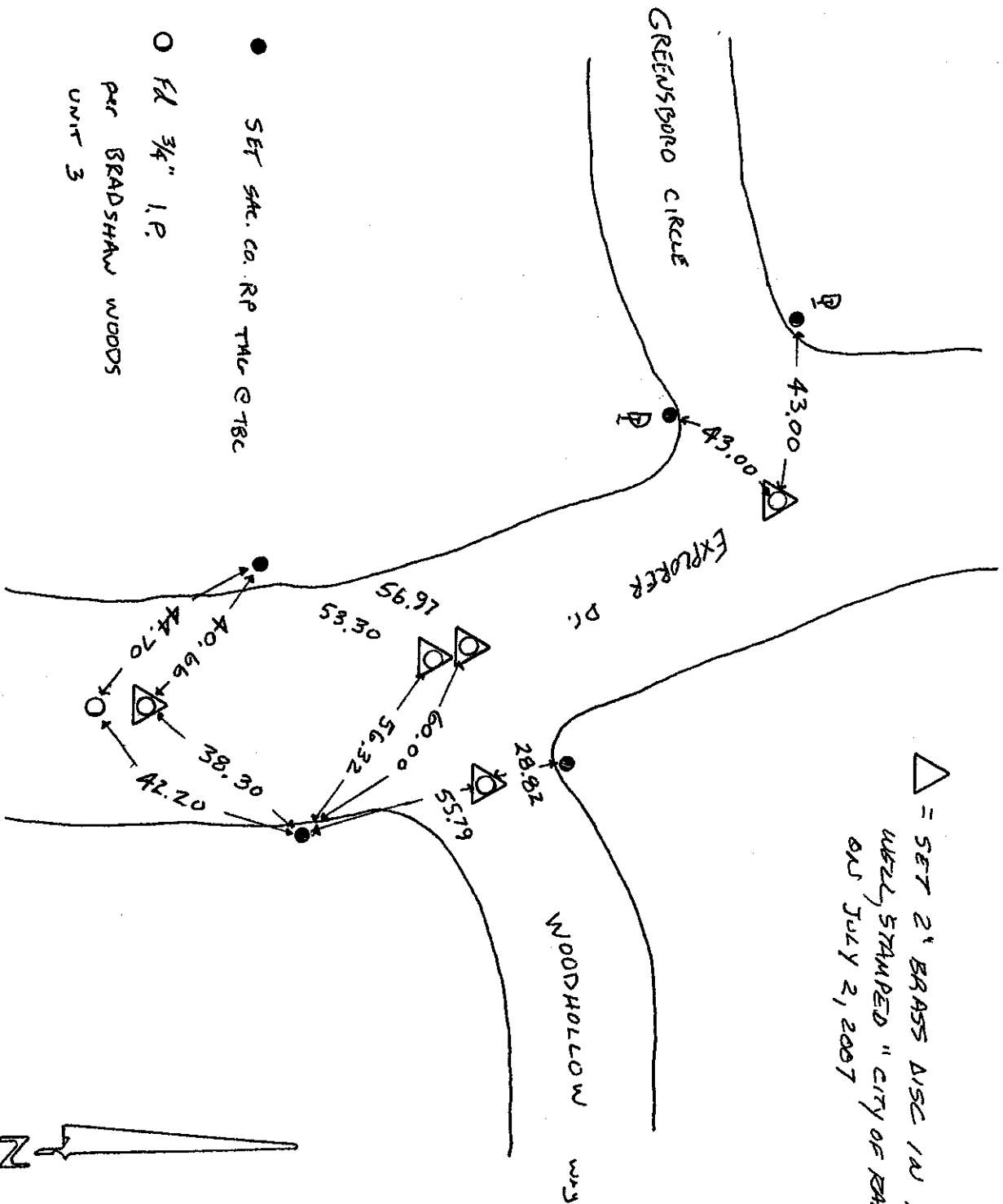
Date: 4-17-07

Project: RANCHO CORONA PMNT. REHAB

BRAD BRADSHAW

Page: RP 1

△ = SET 2" BRASS DISC IN MONUMENT  
WELL STAMPED "CITY OF RANCHO CORONA,"  
ON JULY 2, 2007



● SET SMC. CO. RP TAG @ T8C

○ FL 3/4" I.P.  
PER BRADSHAW WOODS  
UNIT 3