

Corner Record

Document Number 1699

City of Rancho Cordova

County of Sacramento, California

Brief Legal Description

The intersection of Elmanto Dr. and Ambassador Dr., as shown on the "Plat of Larchmont Cordova Unit No. 3", filed in the office of the Recorder of the County of Sacramento in book 69 of maps, at page 26.



Corner Type

Coordinates

(Optional)

Government Corner ()	Control ()	N. _____
Meander ()	Property (x)	E. _____
Rancho ()	Other ()	Zone _____ Datum _____
Date of Survey <u>4/20/2007</u>	Elev. _____	

Corner- Left as Found () Found and Tagged () Established () Reestablished (x) Rebuilt ()

Identification and Type of Corner Found, Evidence used to Identify or Procedure used to Establish or Reestablish the corner:

Found 3/4" iron pipe monument at the intersection of Elmanto Dr. and Ambassador Dr., as described in book 69 of maps, at page 26 filed in the office of the Recorder of Sacramento County, California. Set 3/4" Sacramento County brass tags in concrete for reference points. Refer to Sacramento County field notes A-259, page RP-10, 4/20/2007.

A Description of the Physical Condition of the Monument as Found and as Set or Reset:

Replaced original monument on 7/2/2007 with 2" brass disc in monument well stamped "City of Rancho Cordova" in original position after original monument was destroyed as a result of construction.

Surveyor's Statement

This Corner Record was prepared by me or under my direction in conformance with The Land Surveyor's Act on 7/24/2007

Signed Thomas F. X. Sekel
Thomas F. X. Sekel

L.S. or R.C.E. LS 4897



County Surveyor's Statement

This Corner Record was received 9/28, 2007 and examined and filed 10/1, 2007

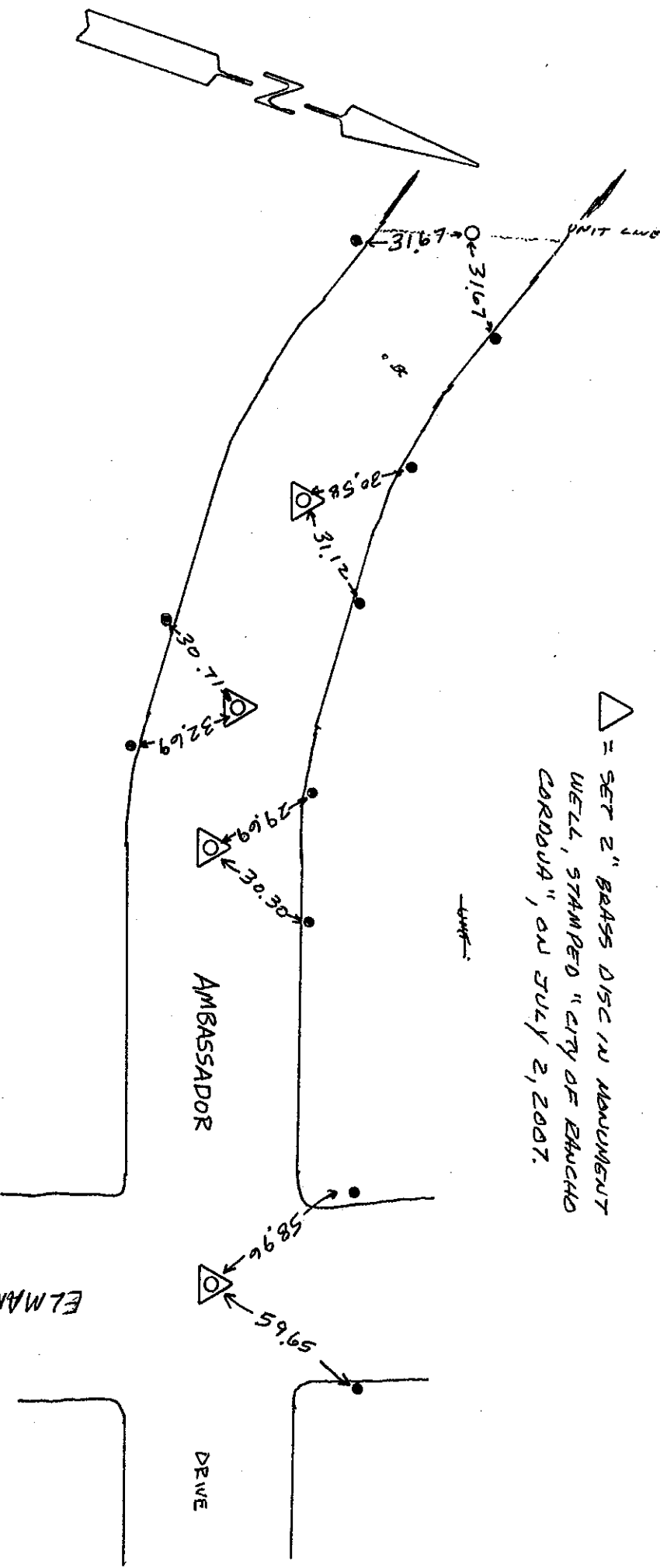
Signed Larry Savio
Larry Savio

Title: Associate Land Surveyor

County Surveyor's Comments:



△ = SET 2" BRASS DISC IN MOUNTMENT WELL, STAMPED "CITY OF SACRAMENTO CORPORA", ON JULY 2, 2007.



LEGEND:

● SET SAC. CO. RP TAG ○ TBC

○ 1/4" 3/4" I.P.

Per ARCHMOUNT - CORPORA UNIT 3