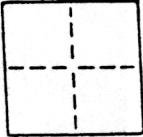


CORNER RECORD

COUNTY OF SACRAMENTO T. 5N R. 4E M.D.B. & MERIDIAN CALIFORNIA
 CORNER TYPE: GOV'T. CORNER MEANDER RANCHO CONTROL OTHER
 CORNER IDENTIFICATION — DATE OF VISIT _____ 19____



WALNUT GROVE HOMEOWNERS & MERCHANTS SUB - LOT 68

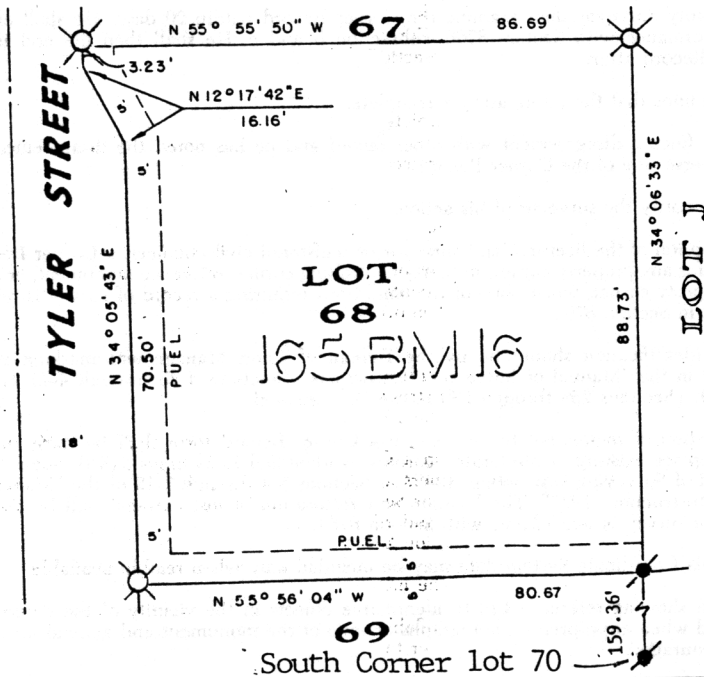
CORNER — LEFT AS FOUND FOUND AND TAGGED REESTABLISHED OBLITERATED CORNER REBUILT

PHYSICAL DESCRIPTION OF CORNER FOUND; EVIDENCE AND METHOD USED TO IDENTIFY OR REESTABLISH

PHYSICAL DESCRIPTION OF MONUMENTS REBUILT OR PERPETUATED

CALIFORNIA COORDINATE SYSTEM ORDER: FIRST SECOND THIRD
 STATIONS USED: NGS (USC & GS) STATE COUNTY OTHER STATION _____ STATION _____
 ZONE _____ ELEVATION _____ NORTHINGS (N) _____ EASTINGS (X) _____

SKETCH: (Include reference tie or witness points, remarks and topo of area)



LEGEND

- SET 3/4" Ø IRON PIPE TAGGED L.S. 5209
- DIMENSION POINT
- FD. NO. 5 REBAR TAGGED L.S. 4900



SURVEYOR'S CERTIFICATE

THIS CORNER RECORD WAS PREPARED BY ME OR UNDER MY SECTION IN CONFORMANCE WITH THE LAND SURVEYORS ACT

No. 5209

SIGNED: [Signature] 19 87
 L.S. 5209

COUNTY SURVEYOR'S CERTIFICATE

THE CORNER RECORD WAS RECEIVED APR 13, 1988
 AND EXAMINED AND FILED APR 13, 1988

BY: D. PARKER
 TITLE: SUPERVISING, ENGINEERING TECH

DOCUMENT No. 168

STATEMENT ON BACK OF SHEET

YES NO

SEAL