

# Corner Record

Document Number 1679

City of Rancho Cordova

County of Sacramento, California

### Brief Legal Description

The intersection of Starrlyn Wy. and Ambassador Dr., as shown on the "Plat of Rossmoor Unit No. 4", filed in the office of the Recorder of the County of Sacramento in book 58 of maps, at page 24.



### Corner Type

### Coordinates

Government Corner  Control  N. \_\_\_\_\_  
 Meander  Property  E. \_\_\_\_\_  
 Rancho  Other  Zone \_\_\_\_\_ Datum \_\_\_\_\_  
 Date of Survey 4/24/2007 Elev. \_\_\_\_\_

Corner- Left as Found  Found and Tagged  Established  Reestablished  Rebuilt

### Identification and Type of Corner Found, Evidence used to Identify or Procedure used to Establish or Reestablish the corner:

Found 3/4" iron pipe monument at the intersection of Starrlyn Wy. and Ambassador Dr., as described in book 58 of maps, at page 24 filed in the office of the Recorder of Sacramento County, California. Set 3/4" Sacramento County brass tags in concrete for reference points. Refer to Sacramento County field notes A-259, page RP-05, 4/24/2007.

### A Description of the Physical Condition of the Monument as Found and as Set or Reset:

Replaced original monument on 7/2/2007 with 2" brass disc in monument well stamped "City of Rancho Cordova" in original position after original monument was destroyed as a result of construction.

## Surveyor's Statement

This Corner Record was prepared by me or under my direction in conformance with The Land Surveyor's Act on 7/23/2007

Signed Thomas F. X. Sekel  
Thomas F. X. Sekel

L.S. or R.C.E. LS 4897



## County Surveyor's Statement

This Corner Record was received 9/28, 2007 and examined and filed 10/1, 2007

Signed Larry Savio  
Larry Savio

Title: Associate Land Surveyor

County Surveyor's Comments:



AMBASSADOR DRIVE

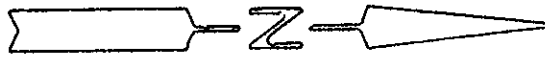
Crew: D. BETH

Date: 4-24-07

Project: RANCHO CORDOVA PMT. REHAIR

B. GARROWMAN

Page: RP 5

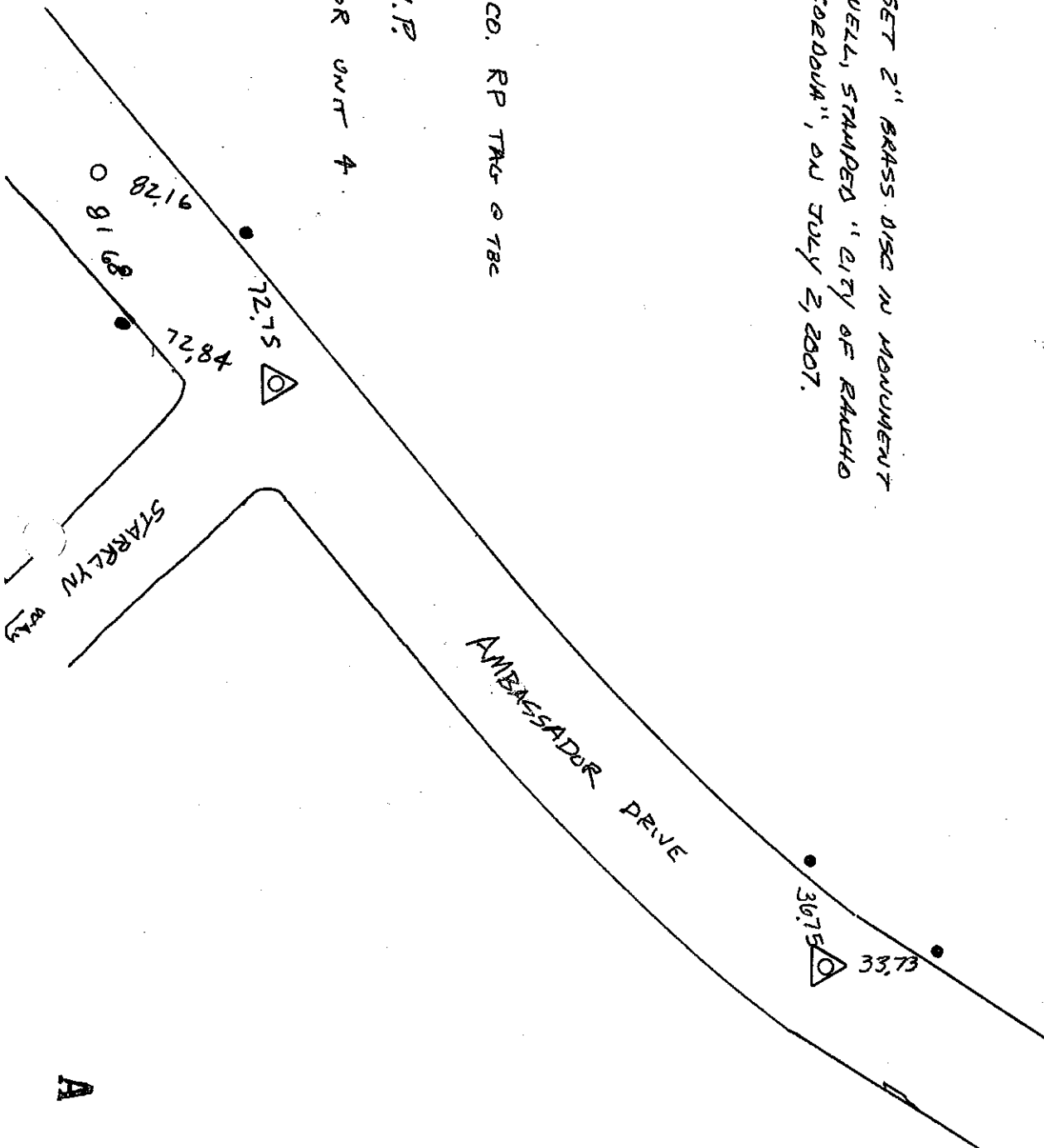


△ = SET 2" BRASS DISC IN MOUNTAIN  
WELL, STAMPED "CITY OF RANCHO  
CORDOVA", ON JULY 2, 2007.

LEGEND: ● SET SAC. CO. RP TAG @ 78c

○ EA 3/4" I.P.

per ROSSMOOR UNIT 4  
58/24



A 259