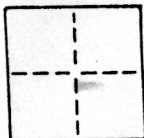


CORNER RECORD

COUNTY OF SACRAMENTO T. 5N R. 4E M.D.B.& MERIDIAN CALIFORNIA

CORNER TYPE: GOVT. CORNER MEANDER RANCHO CONTROL OTHER

CORNER IDENTIFICATION — DATE OF VISIT _____ 19____



WALNUT GROVE HOMEOWNERS & MERCHANTS SUB - LOT 67

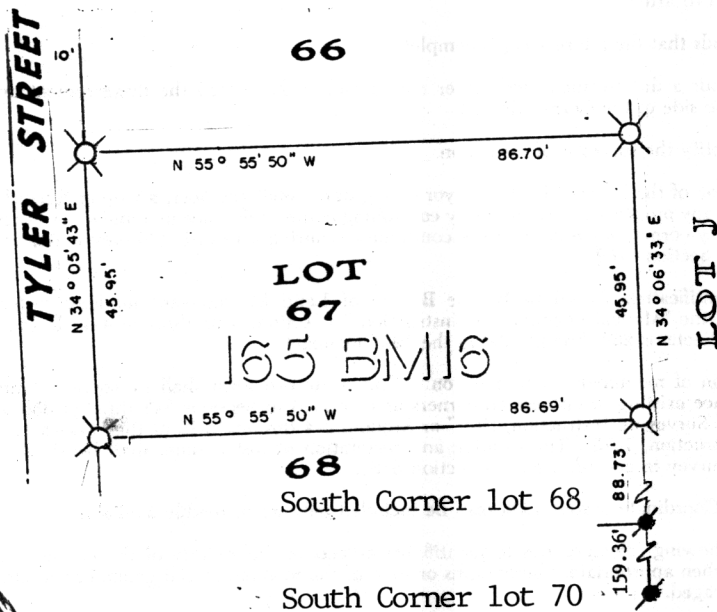
CORNER — LEFT AS FOUND FOUND AND TAGGED REESTABLISHED OBLITERATED CORNER REBUILT

PHYSICAL DESCRIPTION OF CORNER FOUND; EVIDENCE AND METHOD USED TO IDENTIFY OR REESTABLISH

PHYSICAL DESCRIPTION OF MONUMENTS REBUILT OR PERPETUATED

CALIFORNIA COORDINATE SYSTEM ORDER: FIRST SECOND THIRD
 STATIONS USED: NGS (USC & GS) STATE COUNTY OTHER STATION _____
 ZONE _____ ELEVATION _____ NORTHINGS (Y) _____ EASTINGS (X) _____

SKETCH: (Include reference tie or witness points, remarks and topo of area)



LEGEND

- SET 3/4" Ø IRON PIPE TAGGED L.S. 5209
- DIMENSION POINT
- FD. NO.5 REBAR TAGGED L.S. 4900



SURVEYOR'S CERTIFICATE
 THIS CORNER RECORD WAS PREPARED BY ME OR UNDER MY DIRECTION IN CONFORMANCE WITH THE LAND SURVEYORS ACT
 No. 5209
 EXPIRES 6-30-91
 SIGNED: [Signature]
 L.S. or No.: L.S. 5209

COUNTY SURVEYOR'S CERTIFICATE
 THE CORNER RECORD WAS RECEIVED APR 13 1988
 AND EXAMINED AND FILED APR 13 1988
 BY: D. PARKER
 TITLE: SUPERVISING ENGINEERING TECH

DOCUMENT No. 167

STATEMENT ON BACK OF SHEET

YES NO

SEAL