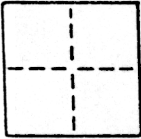


CORNER RECORD

COUNTY OF SACRAMENTO T. 5N R. 4E M.D.B.& MERIDIAN CALIFORNIA
 CORNER TYPE: GOVT. CORNER MEANDER RANCHO CONTROL OTHER
 CORNER IDENTIFICATION — DATE OF VISIT _____ 19____



WALNUT GROVE HOMEOWNERS & MERCHANT SUB - LOT 65

CORNER — LEFT AS FOUND FOUND AND TAGGED REESTABLISHED OBLITERATED CORNER REBUILT

PHYSICAL DESCRIPTION OF CORNER FOUND; EVIDENCE AND METHOD USED TO IDENTIFY OR REESTABLISH

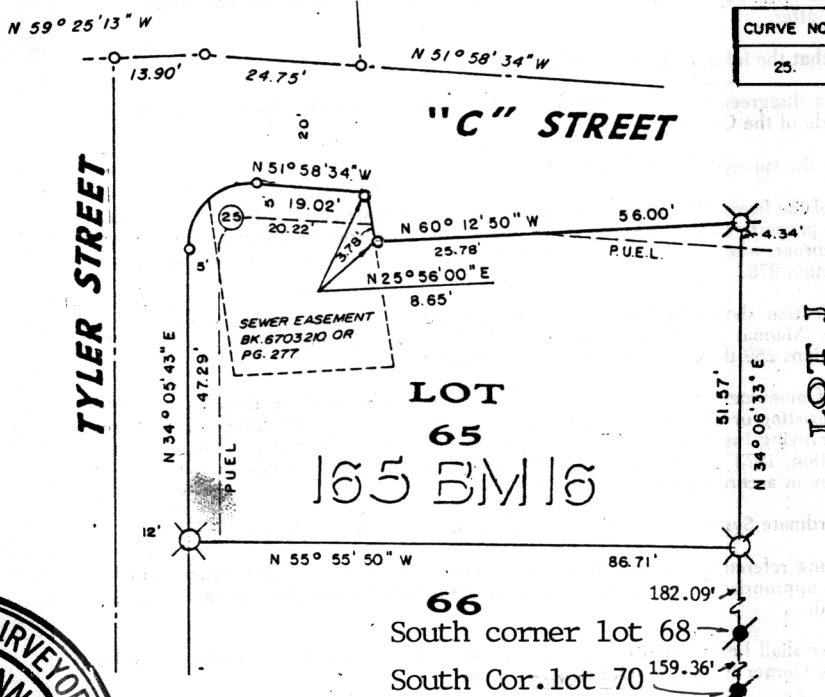
PHYSICAL DESCRIPTION OF MONUMENTS REBUILT OR PERPETUATED

CALIFORNIA COORDINATE SYSTEM ORDER: FIRST SECOND THIRD
 STATIONS USED: NGS (USC & GS) STATE COUNTY OTHER STATION _____ STATION _____
 ZONE _____ ELEVATION _____ NORTHINGS (Y) _____ EASTINGS (X) _____

SKETCH: (Include reference tie or witness points, remarks and topo of area)

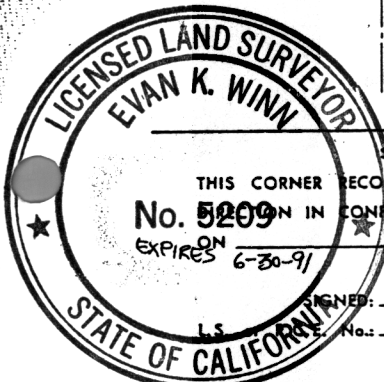
CURVE DATA

CURVE NO.	RADIUS	CHORD BEARING	CHORD DISTANCE
25	10.00'	N 81° 03' 24" E	14.62'



LEGEND

- SET 3/4" Ø IRON PIPE TAGGED L.S. 5209
- DIMENSION POINT
- FD. NO. 5 REBAR TAGGED L.S. 4900



SURVEYOR'S CERTIFICATE
 THIS CORNER RECORD WAS PREPARED BY ME OR UNDER MY
 No. 5209 IN CONFORMANCE WITH THE LAND SURVEYORS ACT
 ON Dec 15 1987
 SIGNED: [Signature]
 L.S. No.: LS 5209

COUNTY SURVEYOR'S CERTIFICATE
 THE CORNER RECORD WAS RECEIVED APR 13, 1988
 AND EXAMINED AND FILED APR 13, 1988
 BY: D. PARKER
 TITLE: SUPERVISING ENGINEERING TECH
 DOCUMENT No. 165
 STATEMENT ON BACK OF SHEET