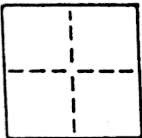


CORNER RECORD

COUNTY OF SACRAMENTO T. 5 N. R. 4 E. M.D.B.& MERIDIAN CALIFORNIA
 CORNER TYPE: GOVT. CORNER MEANDER RANCHO CONTROL OTHER
 CORNER IDENTIFICATION — DATE OF VISIT _____ 19____



WALNUT GROVE HOMEOWNERS & MERCHANTS SUB-LOTS-54, 59, 60, 61

CORNER — LEFT AS FOUND FOUND AND TAGGED REESTABLISHED OBLITERATED CORNER REBUILT

PHYSICAL DESCRIPTION OF CORNER FOUND; EVIDENCE AND METHOD USED TO IDENTIFY OR REESTABLISH

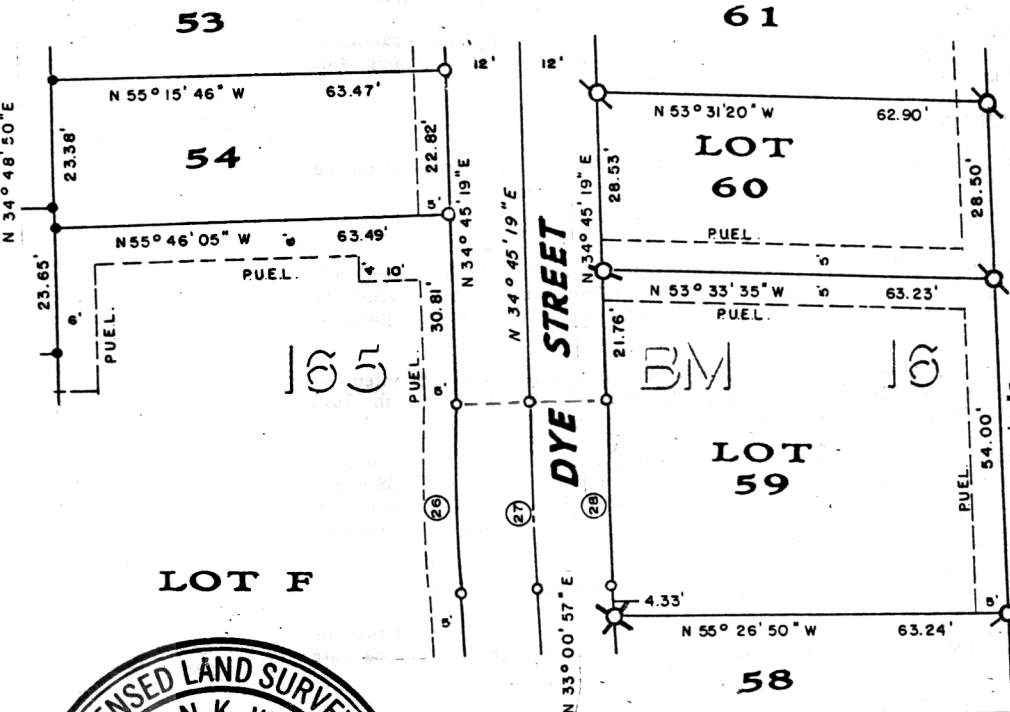
PHYSICAL DESCRIPTION OF MONUMENTS REBUILT OR PERPETUATED

CALIFORNIA COORDINATE SYSTEM ORDER: FIRST SECOND THIRD
 STATIONS USED: NGS (USC & GS) STATE COUNTY OTHER STATION _____ STATION _____
 ZONE _____ ELEVATION _____ NORTHINGS (Y) _____ EASTINGS (X) _____

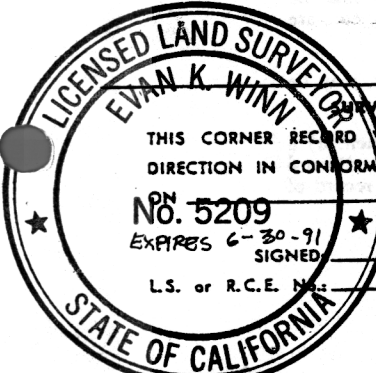
SKETCH: (Include reference tie or witness points, remarks and topo of area)

CURVE DATA

CURVE NO.	RADIUS	CHORD BEARING	CHORD DISTANCE
26.	1012.00'	N 33° 53' 08" E	30.72'
27.	1000.00'	N 33° 52' 08" E	30.36'
28.	988.00'	N 33° 52' 08" E	29.99'



- LEGEND**
- SET 1/2" ϕ IRON PIPE TAGGED L.S.5209
 - SET NAIL & TAG IN CURB L.S.5209
 - DIMENSION POINT
 - FD. NO.4 REBAR TAGGED L.S.4900



SURVEYOR'S CERTIFICATE
 THIS CORNER RECORD WAS PREPARED BY ME OR UNDER MY DIRECTION IN CONFORMANCE WITH THE LAND SURVEYORS ACT
 ON NOV 13 1987
 EXPIRES 6-30-91
 SIGNED [Signature]
 L.S. or R.C.E. No. L.S. 5209

COUNTY SURVEYOR'S CERTIFICATE
 THE CORNER RECORD WAS RECEIVED APR 13 1988
 AND EXAMINED AND FILED APR 14 1988
 BY: D. PARKER
 TITLE: SURVEYS INC ENGINEERING TECH

DOCUMENT No. 164
 STATEMENT ON BACK OF SHEET YES NO

SEAL